

UBE2Q2 RABBIT PAB

货号: S218307

产品全名: UBE2Q2 兔多抗

基因符号

UNIPROT ID: Q8WVN8 (Gene Accession - BC017708)

背景: UBE2Q2 (Ubiquitin-conjugating enzyme E2 Q2) is a 375 amino acid cytoplasmic protein that is involved in ubiquitin-mediated protein degradation. Ubiquitination is an important mechanism through which three classes of enzymes act in concert to target short-lived or abnormal proteins for destruction. The three classes of enzymes involved in ubiquitination are the ubiquitin-activating enzymes (E1s), the ubiquitin-conjugating enzymes (E2s) and the ubiquitin-protein ligases (E3s). One of several members of the ubiquitin-conjugating enzyme family, UBE2Q2 is an E2 ubiquitin-conjugating enzyme that acts to catalyze the covalent attachment of ubiquitin residues to various proteins. UBE2Q2 expression is detected in invasive epithelial tissue and tumor masses including head and neck squamous cell carcinomas, suggesting a role for UBE2Q2 in carcinogenesis. Two isoforms of UBE2Q2 exist due to alternative splicing events.

抗原: Fusion protein of human UBE2Q2

经过测试的应用: ELISA, IHC

推荐稀释比: IHC: 25-100; ELISA: 5000-10000

种属反应性: Rabbit

克隆性: Rabbit Polyclonal

亚型: Immunogen-specific rabbit IgG

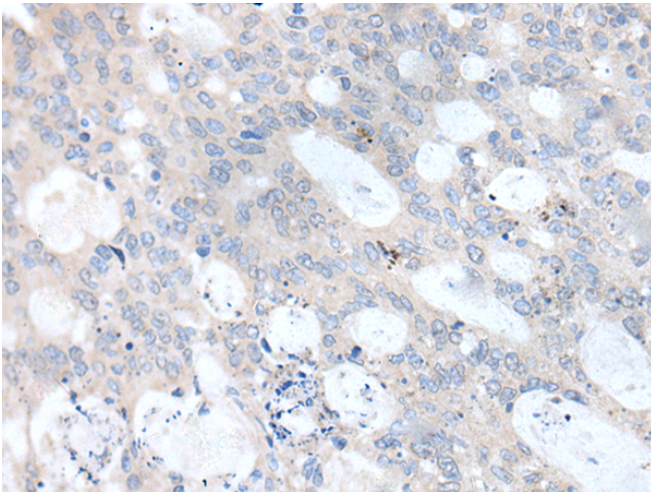
纯化: Antigen affinity purification

种属反应性: Human, Mouse

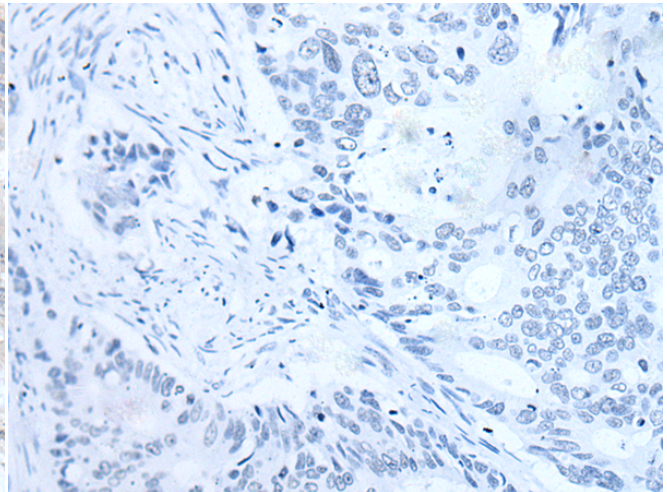
成分: PBS (without Mg²⁺ and Ca²⁺), pH 7.4, 150 mM NaCl, 0.05% Sodium Azide and 40% glycerol

研究领域: Epigenetics and Nuclear Signaling

储存和运输: Store at -20°C. Avoid repeated freezing and thawing



Immunohistochemistry analysis of paraffin embedded Human colorectal cancer tissue using 218307(UBE2Q2 Antibody) at a dilution of 1/35(Cytoplasm).



In comparison with the IHC on the left, the same paraffin-embedded Human colorectal cancer tissue is first treated with the fusion protein and then with 218307(Anti-UBE2Q2 Antibody) at dilution 1/35.