

UBE2A RABBIT PAB

货号: S218811

产品全名: UBE2A 兔多抗

基因符号: UBC2; HHR6A; MRXSN; RAD6A; MRXS30

UNIPROT ID: P49459 (Gene Accession - BC010175)

背景: The modification of proteins with ubiquitin is an important cellular mechanism for targeting abnormal or short-lived proteins for degradation. Ubiquitination involves at least three classes of enzymes: ubiquitin-activating enzymes, ubiquitin-conjugating enzymes, and ubiquitin-protein ligases. This gene encodes a member of the E2 ubiquitin-conjugating enzyme family. This enzyme is required for post-replicative DNA damage repair, and may play a role in transcriptional regulation. Mutations in this gene are associated with mental retardation. Alternative splicing results in multiple transcript variants.

抗原: Fusion protein of human UBE2A

经过测试的应用: ELISA, IHC

推荐稀释比: IHC: 50-300; ELISA: 5000-10000

种属反应性: Rabbit

克隆性: Rabbit Polyclonal

亚型: Immunogen-specific rabbit IgG

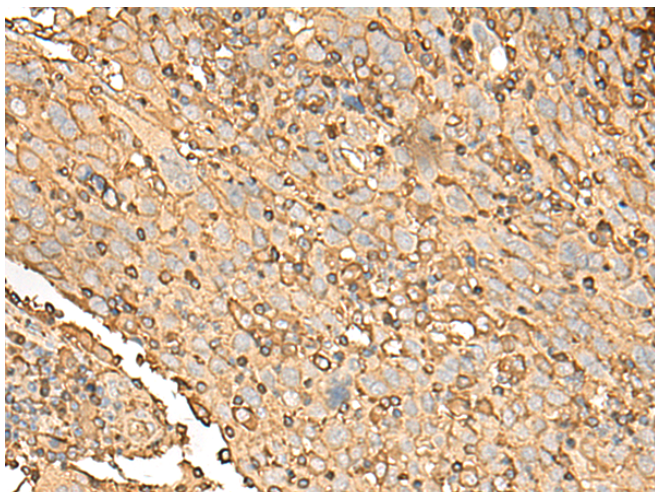
纯化: Antigen affinity purification

种属反应性: Human, Mouse

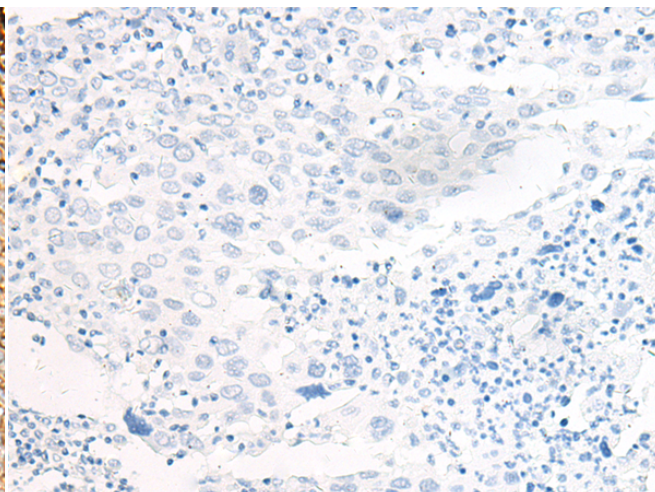
成分: PBS (without Mg²⁺ and Ca²⁺), pH 7.4, 150 mM NaCl, 0.05% Sodium Azide and 40% glycerol

研究领域: Epigenetics and Nuclear Signaling, Cell Biology

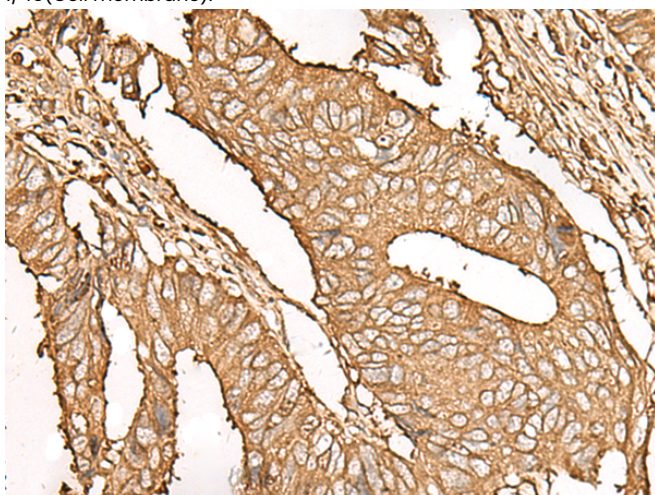
储存和运输: Store at -20°C. Avoid repeated freezing and thawing



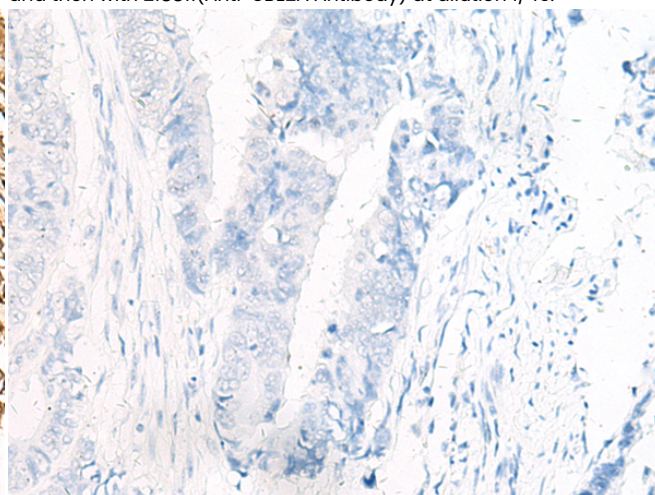
Immunohistochemistry analysis of paraffin embedded Human cervical cancer tissue using 218811(UBE2A Antibody) at a dilution of 1/45(Cell membrane).



In comparison with the IHC on the left, the same paraffin-embedded Human cervical cancer tissue is first treated with the fusion protein and then with 218811(Anti-UBE2A Antibody) at dilution 1/45.



The image on the left is immunohistochemistry of paraffin-embedded Human colorectal cancer tissue using 218811(Anti-UBE2A Antibody) at a dilution of 1/45.



In comparison with the IHC on the left, the same paraffin-embedded Human colorectal cancer tissue is first treated with fusion protein and then with D225251(Anti-UBE2A Antibody) at dilution 1/45.



Product Description

Pioneering GTPase and Oncogene Product Development since 2010
