

## UBA2 RABBIT PAB

货号: N225933

产品全名: UBA2 兔多抗

基因符号 UBA2; SAE2; UBLE1B; HRIHFB2115; SUMO-activating enzyme subunit 2; Anthracycline-associated resistance ARX; Ubiquitin-like 1-activating enzyme E1B

**UNIPROT ID:** Q9UBT2

**背景:** The heterodimer acts as a E1 ligase for SUMO1, SUMO2, SUMO3, and probably SUMO4. It mediates ATP-dependent activation of SUMO proteins followed by formation of a thioester bond between a SUMO protein and a conserved active site cysteine residue on UBA2/SAE2.

**抗原:** A synthesized peptide derived from human SAE2 / UBA2

**经过测试的应用:** WB,IHC-P,ICC/IF,IP

**推荐稀释比:** WB: 1/500-1/1000 IHC: 1/50-1/100 IF: 1/50-1/200 IP: 1/20

**种属反应性:** Rabbit

**克隆性:** Rabbit Polyclonal

**分子量:** Calculated MW: 71 kDa; Observed MW: 90 kDa

**亚型:** IgG

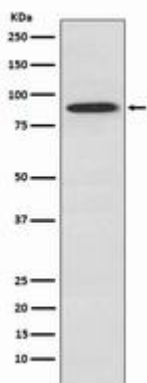
**纯化:** Affinity Chromatography

**种属反应性:** Human, Mouse and Rat

**成分:** PBS (without Mg<sup>2+</sup> and Ca<sup>2+</sup>), pH 7.3 containing 50% glycerol, 0.5% BSA and 0.02% sodium azide

**研究领域:** Cell Biology

**储存和运输:** Store at -20°C. Avoid repeated freezing and thawing



Western blot analysis of SAE2 / UBA2 in A549 lysates using UBA2 antibody.



# Product Description

Pioneering GTPase and Oncogene Product Development since 2010

---