

TWSG1 RABBIT PAB

货号: S218185

产品全名: TWSG1 兔多抗

基因符号 TSG

UNIPROT ID: Q9GZX9 (Gene Accession - BC020490)

背景: Enables transforming growth factor beta binding activity. Involved in several processes, including negative regulation of CD4-positive, alpha-beta T cell proliferation; positive regulation of pathway-restricted SMAD protein phosphorylation; and transforming growth factor beta receptor signaling pathway. Predicted to be located in extracellular region. Predicted to be active in extracellular space. [provided by Alliance of Genome Resources, Apr 2022]

抗原: Fusion protein of human TWSG1

经过测试的应用: ELISA, IHC

推荐稀释比: IHC: 50-200; ELISA: 5000-10000

种属反应性: Rabbit

克隆性: Rabbit Polyclonal

亚型: Immunogen-specific rabbit IgG

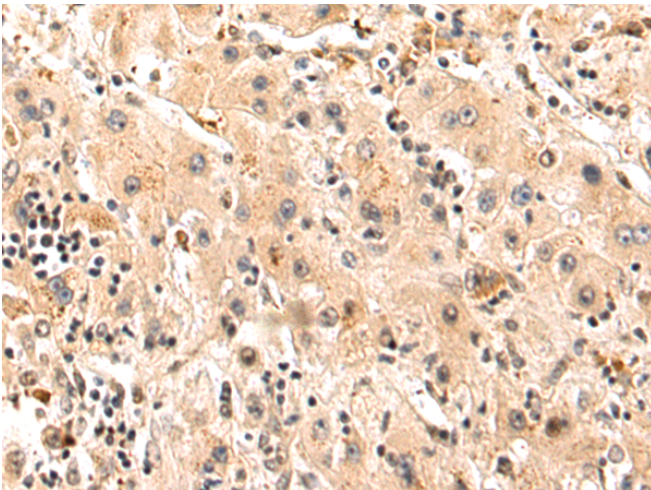
纯化: Antigen affinity purification

种属反应性: Human, Mouse

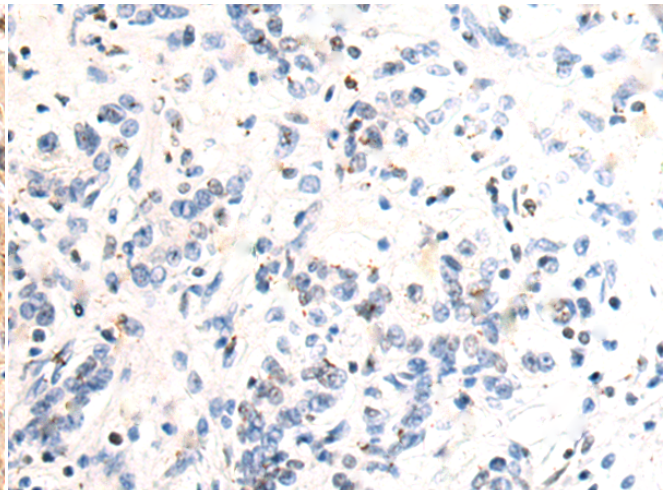
成分: PBS (without Mg²⁺ and Ca²⁺), pH 7.4, 150 mM NaCl, 0.05% Sodium Azide and 40% glycerol

研究领域: Neuroscience

储存和运输: Store at -20°C. Avoid repeated freezing and thawing



Immunohistochemistry analysis of paraffin embedded Human liver cancer tissue using 218185(TWSG1 Antibody) at a dilution of 1/80 (Secreted).



In comparison with the IHC on the left, the same paraffin-embedded Human liver cancer tissue is first treated with the fusion protein and then with 218185(Anti-TWSG1 Antibody) at dilution 1/80.