

TWF2 RABBIT PAB

货号: S217109

产品全名: TWF2 兔多抗

基因符号: A6r; A6RP; PTK9L; MSTP011

UNIPROT ID: Q6IBS0 (Gene Accession - BC016452)

背景: The protein encoded by this gene was identified by its interaction with the catalytic domain of protein kinase C-zeta. The encoded protein contains an actin-binding site and an ATP-binding site. It is most closely related to twinfilin (PTK9), a conserved actin monomer-binding protein.

抗原: Fusion protein of human TWF2

经过测试的应用: ELISA, WB, IHC

推荐稀释比: IHC: 25-100; WB: 500-2000; ELISA: 2000-5000

种属反应性: Rabbit

克隆性: Rabbit Polyclonal

亚型: Immunogen-specific rabbit IgG

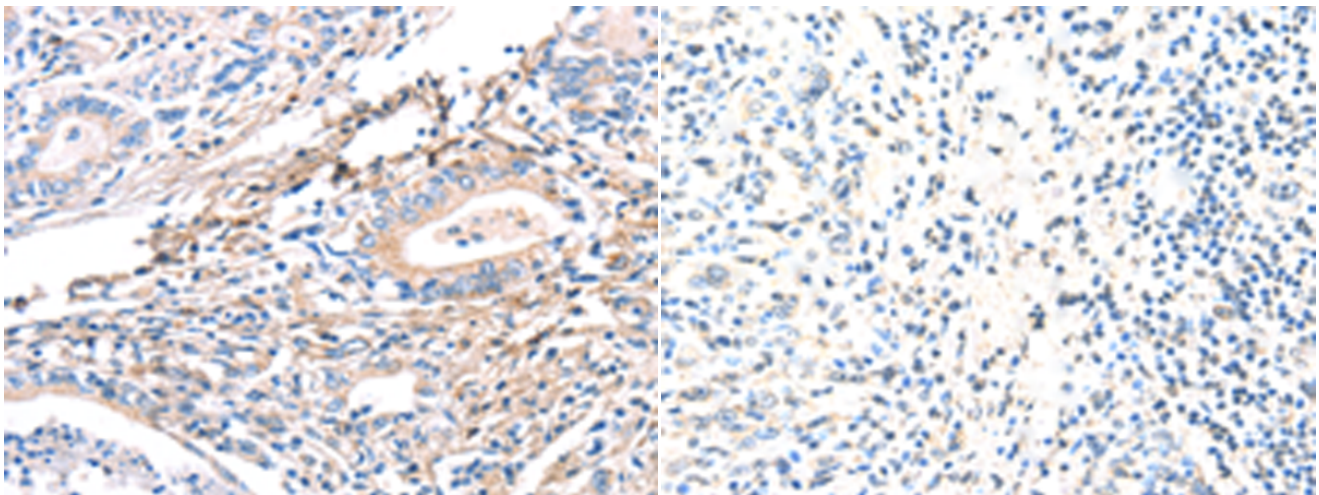
纯化: Antigen affinity purification

种属反应性: Human, Mouse

成分: PBS (without Mg²⁺ and Ca²⁺), pH 7.4, 150 mM NaCl, 0.05% Sodium Azide and 40% glycerol

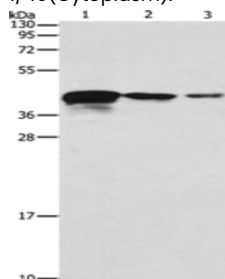
研究领域: Signal Transduction, Neuroscience

储存和运输: Store at -20°C. Avoid repeated freezing and thawing



Immunohistochemistry analysis of paraffin embedded Human gastric cancer tissue using 217109(TWF2 Antibody) at a dilution of 1/40(Cytoplasm).

In comparison with the IHC on the left, the same paraffin-embedded Human gastric cancer tissue is first treated with the fusion protein and then with 217109(Anti-TWF2 Antibody) at dilution 1/40.



Gel: 10%SDS-PAGE, Lysate: 40 µg;

Lane 1-3: Human endometrial carcinoma tissue, A172 cells, U937 cells;

Primary antibody: 217109(TWF2 Antibody) at dilution 1/800;

Secondary antibody: Goat anti rabbit IgG at 1/8000 dilution;

Exposure time: 20 seconds