

TUSC2 RABBIT PAB

货号: S217958

产品全名: TUSC2 兔多抗

基因符号: PAP; FUS1; PDAP2; C3orf11

UNIPROT ID: O75896 (Gene Accession - BC023976)

背景: This gene is a highly conserved lung cancer candidate gene. No other information about this gene is currently available.

抗原: Full length fusion 蛋白

经过测试的应用: ELISA, IHC

推荐稀释比: IHC: 30-150; ELISA: 2000-10000

种属反应性: Rabbit

克隆性: Rabbit Polyclonal

亚型: Immunogen-specific rabbit IgG

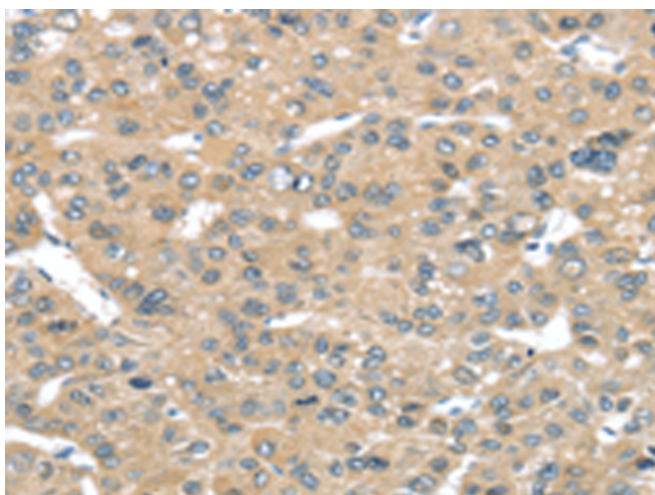
纯化: Antigen affinity purification

种属反应性: Human, Mouse

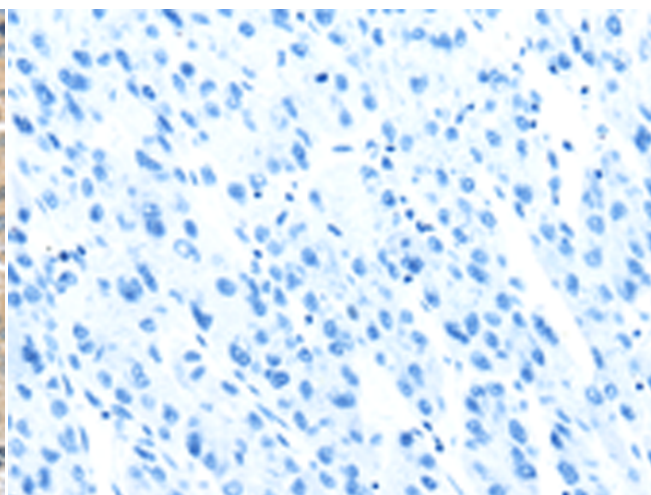
成分: PBS (without Mg²⁺ and Ca²⁺), pH 7.4, 150 mM NaCl, 0.05% Sodium Azide and 40% glycerol

研究领域: Epigenetics and Nuclear Signaling, Cancer

储存和运输: Store at -20°C. Avoid repeated freezing and thawing



Immunohistochemistry analysis of paraffin embedded Human liver cancer tissue using 217958(TUSC2 Antibody) at a dilution of 1/50(Cytoplasm).



In comparison with the IHC on the left, the same paraffin-embedded Human liver cancer tissue is first treated with the fusion protein and then with 217958(Anti-TUSC2 Antibody) at dilution 1/50.