

## TUSC1 RABBIT PAB

货号: S221066

产品全名: TUSC1 兔多抗

基因符号 TSG9; TSG-9

**UNIPROT ID:** Q2TAM9 (Gene Accession - NP\_001004125 )

**背景:** This gene is located within the region of chromosome 9p that harbors tumor suppressor genes critical in carcinogenesis. It is an intronless gene which is downregulated in non-small-cell lung cancer and small-cell lung cancer cell lines, suggesting that it may play a role in lung tumorigenesis.

**抗原:** Synthetic peptide of human TUSC1

**经过测试的应用:** ELISA, WB, IHC

**推荐稀释比:** IHC: 30-150;WB: 200-1000;ELISA: 1000-2000

**种属反应性:** Rabbit

**克隆性:** Rabbit Polyclonal

**亚型:** Immunogen-specific rabbit IgG

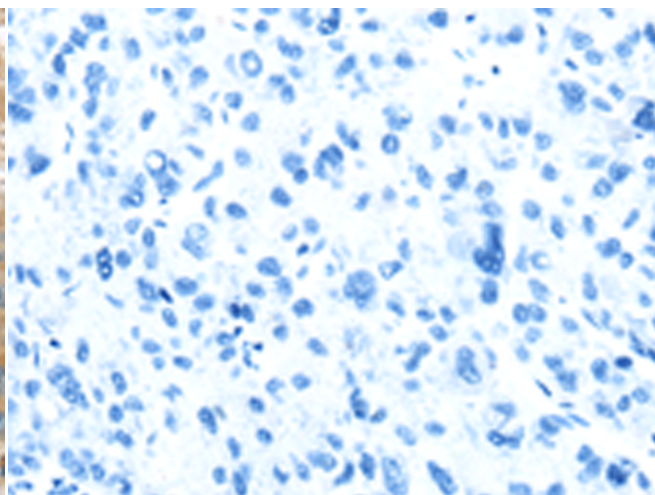
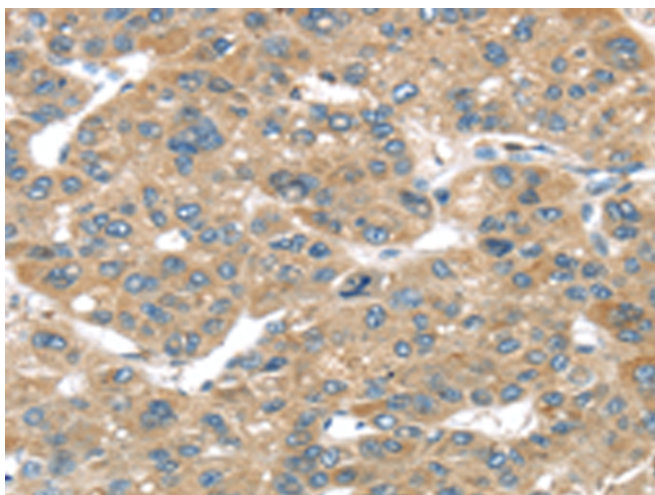
**纯化:** Antigen affinity purification

**种属反应性:** Human

**成分:** PBS (without Mg<sup>2+</sup> and Ca<sup>2+</sup>), pH 7.4, 150 mM NaCl, 0.05% Sodium Azide and 40% glycerol

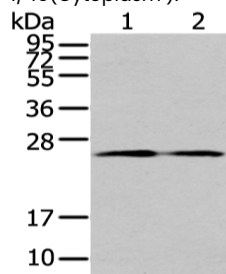
**研究领域:** Cancer

**储存和运输:** Store at -20°C. Avoid repeated freezing and thawing



Immunohistochemistry analysis of paraffin embedded Human liver cancer tissue using 221066(TUSC1 Antibody) at a dilution of 1/45(Cytoplasm).

In comparison with the IHC on the left, the same paraffin-embedded Human liver cancer tissue is first treated with the synthetic peptide and then with 221066(Anti-TUSC1 Antibody) at dilution 1/45.



Gel: 12%SDS-PAGE, Lysate: 40 µg;  
Lane 1-2: PC3 cell and human colon cancer tissue;  
Primary antibody: 221066(TUSC1 Antibody) at dilution 1/200;  
Secondary antibody: Goat anti rabbit IgG at 1/8000 dilution;  
Exposure time: 1 minute