

TUBGCP2 RABBIT PAB

货号: S220567

产品全名: TUBGCP2 兔多抗

基因符号: GCP2; GCP-2; h103p; hGCP2; SPBC97; Spc97p; hSpc97; Grip103

UNIPROT ID: Q9BSJ2 (Gene Accession - NP_006650)

背景: Gamma-tubulin complex component 2 is a protein that in humans is encoded by the TUBGCP2 gene. It is part of the gamma tubulin complex, which is required for microtubule nucleation at the centrosome. TUBGCP2, also known as GCP2 or SPBC97 (spindle pole body protein Spc97 homolog) is a ubiquitously expressed 902 amino acid protein that localizes to the centrosome and is involved in microtubule nucleation.

抗原: Synthetic peptide of human TUBGCP2

经过测试的应用: ELISA, IHC

推荐稀释比: IHC: 25-100; ELISA: 1000-2000

种属反应性: Rabbit

克隆性: Rabbit Polyclonal

亚型: Immunogen-specific rabbit IgG

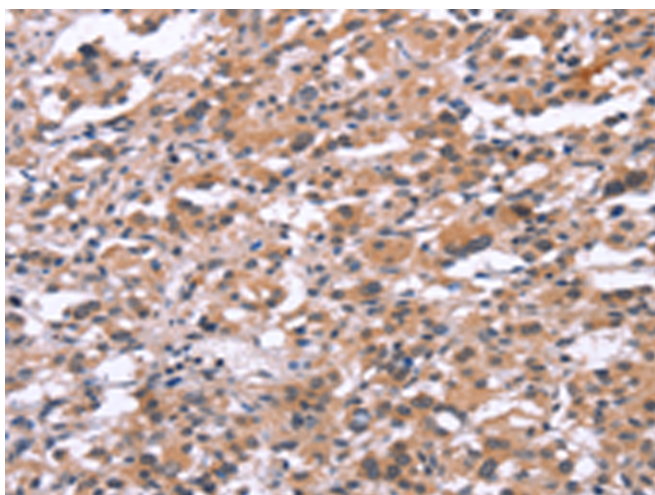
纯化: Antigen affinity purification

种属反应性: Human, Mouse

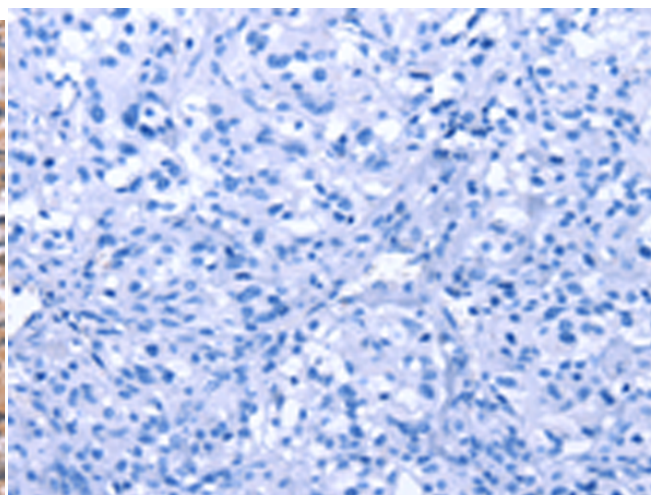
成分: PBS (without Mg²⁺ and Ca²⁺), pH 7.4, 150 mM NaCl, 0.05% Sodium Azide and 40% glycerol

研究领域: Signal Transduction

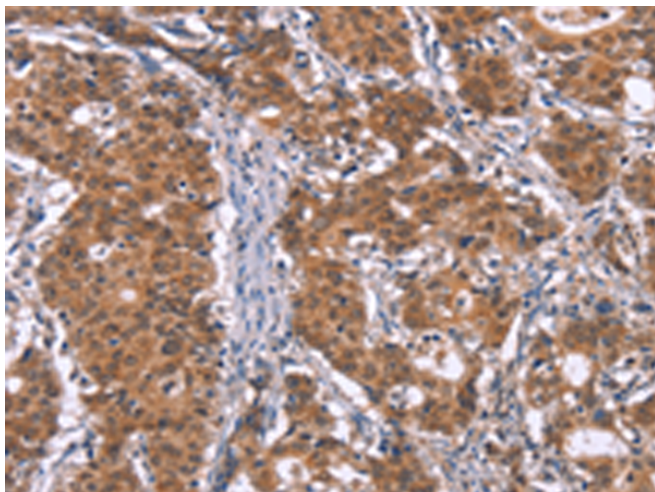
储存和运输: Store at -20°C. Avoid repeated freezing and thawing



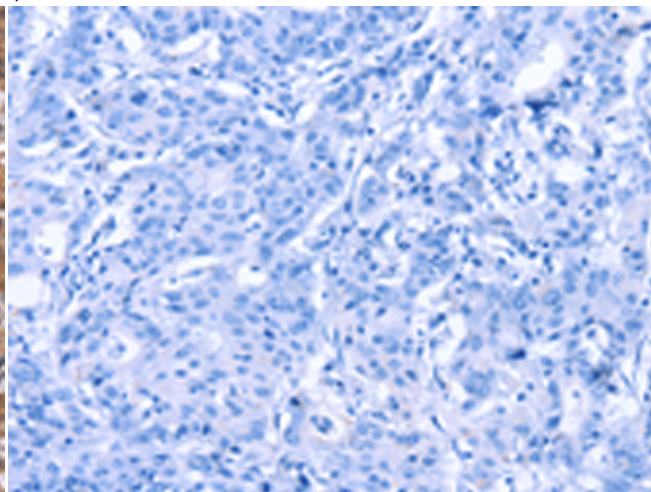
Immunohistochemistry analysis of paraffin embedded Human thyroid cancer tissue using 220567(TUBGCP2 Antibody) at a dilution of 1/15(Cytoplasm or Nucleus).



In comparison with the IHC on the left, the same paraffin-embedded Human thyroid cancer tissue is first treated with the synthetic peptide and then with 220567(Anti-TUBGCP2 Antibody) at dilution 1/15.



The image on the left is immunohistochemistry of paraffin-embedded Human gastric cancer tissue using 220567(Anti-TUBGCP2 Antibody) at a dilution of 1/15.



In comparison with the IHC on the left, the same paraffin-embedded Human gastric cancer tissue is first treated with synthetic peptide and then with D261704(Anti-TUBGCP2 Antibody) at dilution 1/15.



Product Description

Pioneering GTPase and Oncogene Product Development since 2010
