

TUBERIN RABBIT PAB

货号: N226052

产品全名: Tuberin 兔多抗

基因符号 TSC2; Tuberous sclerosis 2 homolog protein; Tuberous sclerosis 2 protein; Tuberin; TSC4

UNIPROT ID: P49815

背景: Tuberin is a product of the TSC2 tumor suppressor gene and an important regulator of cell proliferation and tumor development. Mutations in either TSC2 or the related TSC1 (hamartin) gene cause tuberous sclerosis complex (TSC), an autosomal dominant disorder characterized by development of multiple, widespread non-malignant tumors. Tuberin is directly phosphorylated at Thr1462 by Akt/PKB. Phosphorylation at Thr1462 and Tyr1571 regulates tuberin-hamartin complexes and tuberin activity.

抗原: A synthetic peptide of human Tuberin

经过测试的应用: WB,IHC-P,FC

推荐稀释比: WB: 1/500-1/1000 IHC: 1/50-1/100 FC: 1/50-1/100

种属反应性: Rabbit

克隆性: Rabbit Polyclonal

分子量: Calculated MW: 201 kDa; Observed MW: 201 kDa

亚型: IgG

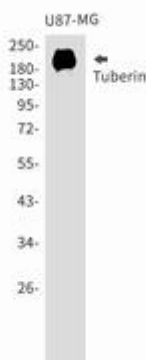
纯化: Affinity Purified

种属反应性: Human, Mouse and Rat

成分: PBS (without Mg²⁺ and Ca²⁺), pH 7.3 containing 50% glycerol, 0.5% BSA and 0.02% sodium azide

研究领域: Cell Biology

储存和运输: Store at -20°C. Avoid repeated freezing and thawing



Western blot analysis of Tuberin in U87-MG lysates using Tuberin antibody.



Product Description

Pioneering GTPase and Oncogene Product Development since 2010
