

TUBD1 RABBIT PAB

货号: S219104

产品全名: TUBD1 兔多抗

基因符号 TUBD

UNIPROT ID: Q9UJT1 (Gene Accession – BC000258)

背景: In the elongating spermatid it is associated with the manchette, a specialized microtubule system present during reshaping of the sperm head.

抗原: Fusion protein of human TUBD1

经过测试的应用: ELISA, WB, IHC

推荐稀释比: IHC: 50-300;WB: 1000-5000;ELISA: 5000-10000

种属反应性: Rabbit

克隆性 : Rabbit Polyclonal

亚型: Immunogen-specific rabbit IgG

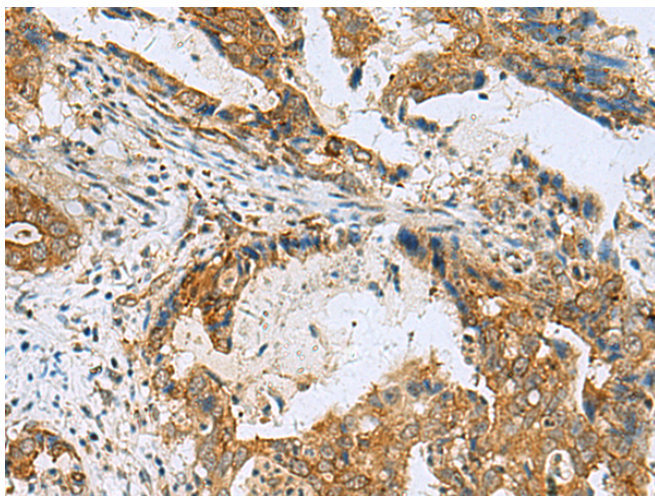
纯化: Antigen affinity purification

种属反应性: Human, Mouse

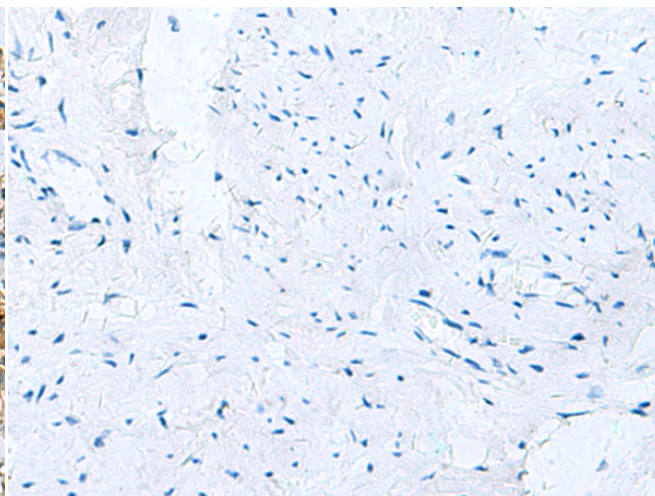
成分: PBS (without Mg²⁺ and Ca²⁺), pH 7.4, 150 mM NaCl, 0.05% Sodium Azide and 40% glycerol

研究领域: Signal Transduction

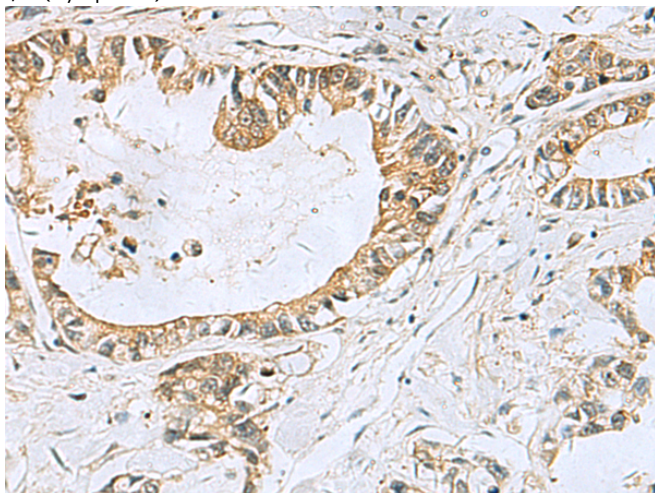
储存和运输: Store at -20°C. Avoid repeated freezing and thawing



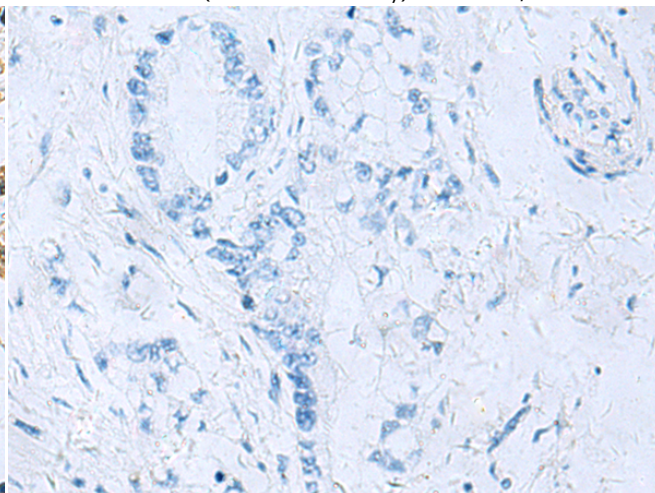
Immunohistochemistry analysis of paraffin embedded Human cervical cancer tissue using 219104(TUBD1 Antibody) at a dilution of 1/70(Cytoplasm).



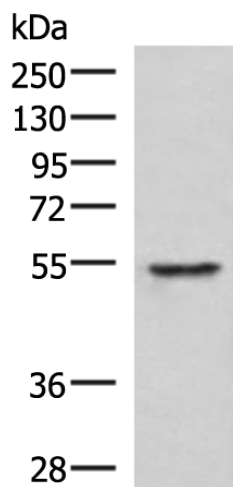
In comparison with the IHC on the left, the same paraffin-embedded Human cervical cancer tissue is first treated with the fusion protein and then with 219104(Anti-TUBD1 Antibody) at dilution 1/70.



The image on the left is immunohistochemistry of paraffin-embedded Human gastric cancer tissue using 219104(Anti-TUBD1 Antibody) at a dilution of 1/70.



In comparison with the IHC on the left, the same paraffin-embedded Human gastric cancer tissue is first treated with fusion protein and then with D225847(Anti-TUBD1 Antibody) at dilution 1/70.



Gel: 8%SDS-PAGE, Lysate: 40 µg;
Lane: Jurkat cell lysate;
Primary antibody: 219104(TUBD1 Antibody) at dilution 1/1000;
Secondary antibody: HRP-conjugated Goat anti rabbit IgG at 1/5000 dilution;
Exposure time: 5 seconds

