

TUBB RABBIT PAB

货号: S211518

产品全名: TUBB 兔多抗

基因符号 M40; TUBB1; TUBB5; CDCBM6; CSCSC1; OK/SW-cl.56

UNIPROT ID: P07437 (Gene Accession - BC001938)

背景: This gene encodes a beta tubulin protein. This protein forms a dimer with alpha tubulin and acts as a structural component of microtubules. Mutations in this gene cause cortical dysplasia, complex with other brain malformations 6. Alternative splicing results in multiple splice variants. There are multiple pseudogenes for this gene on chromosomes 1, 6, 7, 8, 9, and 13.

抗原: Fusion protein of human TUBB

经过测试的应用: ELISA, WB, IHC

推荐稀释比: IHC: 25-100; WB: 1000-5000; ELISA: 5000-10000

种属反应性: Rabbit

克隆性: Rabbit Polyclonal

亚型: Immunogen-specific rabbit IgG

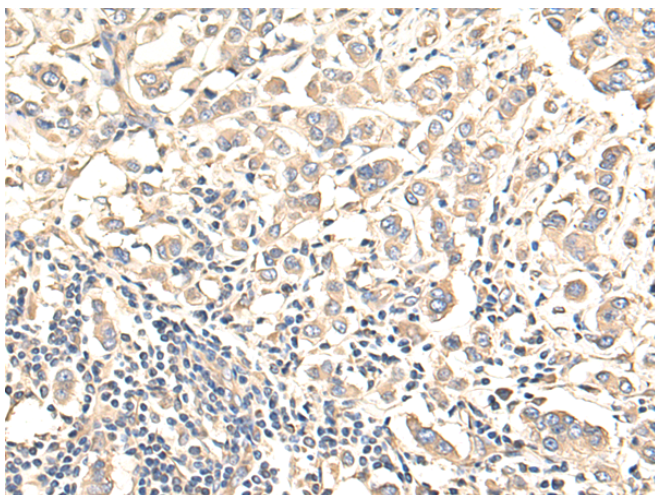
纯化: Antigen affinity purification

种属反应性: Human, Mouse

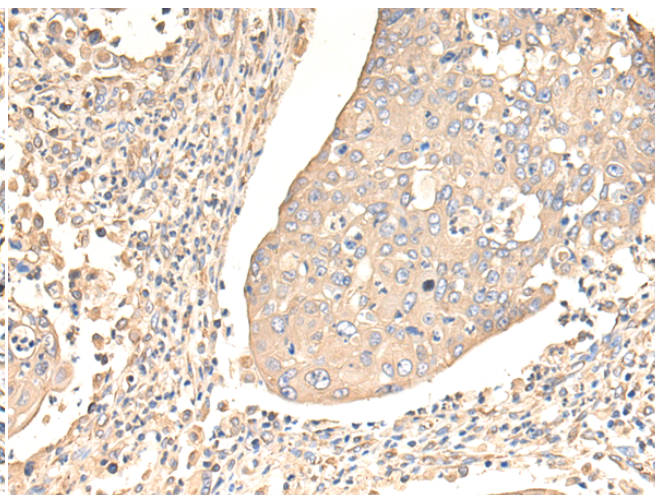
成分: PBS (without Mg²⁺ and Ca²⁺), pH 7.4, 150 mM NaCl, 0.05% Sodium Azide and 40% glycerol

研究领域: Signal Transduction

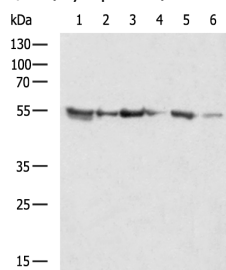
储存和运输: Store at -20°C. Avoid repeated freezing and thawing



Immunohistochemistry analysis of paraffin-embedded Human breast cancer tissue using 211518(TUBB Antibody) at a dilution of 1/30(Cytoplasm).



Immunohistochemistry analysis of paraffin-embedded Human bladder cancer tissue using 211518(Anti-TUBB Antibody) at a dilution of 1/30.



Gel: 8%SDS-PAGE, Lysate: 40 µg;

Lane 1-6: 293T, HepG2, Hela, Jurkat, NIH/3T3, MCF7 cell lysates;

Primary antibody: 211518(TUBB Antibody) at dilution 1/1000;

Secondary antibody: HRP-conjugated Goat anti rabbit IgG at 1/5000 dilution;

Exposure time: 20 seconds