

## TTLL10 RABBIT PAB

货号: S219457

产品全名: TTLL10 兔多抗

基因符号 TTLL5

**UNIPROT ID:** Q6ZVT0 (Gene Accession - BC126152)

背景: Inactive polyglycyclase.

抗原: Fusion protein of human TTLL10

经过测试的应用: ELISA, WB, IHC

推荐稀释比: IHC: 150-300;WB: 500-2000;ELISA: 5000-10000

种属反应性: Rabbit

克隆性: Rabbit Polyclonal

亚型: Immunogen-specific rabbit IgG

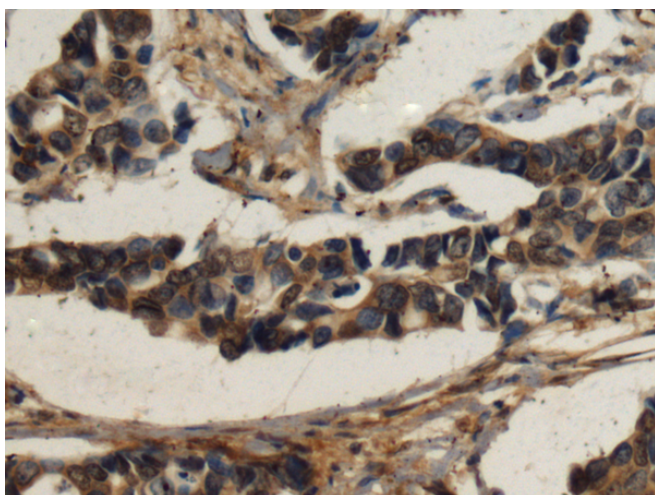
纯化: Antigen affinity purification

种属反应性: Human

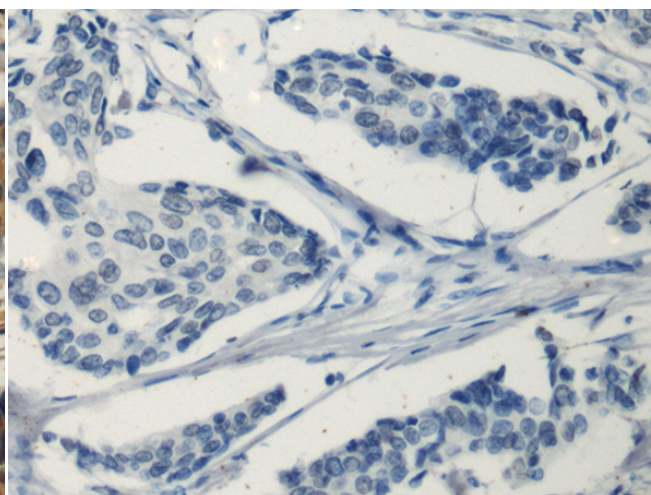
成分: PBS (without Mg<sup>2+</sup> and Ca<sup>2+</sup>), pH 7.4, 150 mM NaCl, 0.05% Sodium Azide and 40% glycerol

研究领域: Metabolism

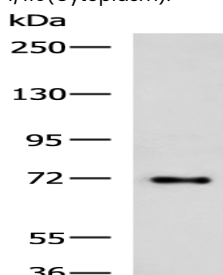
储存和运输: Store at -20°C. Avoid repeated freezing and thawing



Immunohistochemistry analysis of paraffin embedded Human breast cancer tissue using 219457 (TTLL10 Antibody) at a dilution of 1/110 (Cytoplasm).



In comparison with the IHC on the left, the same paraffin-embedded Human breast cancer tissue is first treated with the fusion protein and then with 219457 (Anti-TTLL10 Antibody) at dilution 1/110.



Gel: 6%SDS-PAGE, Lysate: 40 µg;

Lane: HepG2 cell lysate;

Primary antibody: 219457 (TTLL10 Antibody) at dilution 1/850;

Secondary antibody: HRP-conjugated Goat anti rabbit IgG at 1/5000 dilution;

Exposure time: 1 minute