

TTC23 RABBIT PAB

货号: S217954

产品全名: TTC23 兔多抗

基因符号: HCC-8

UNIPROT ID: Q5W5X9 (Gene Accession - BC015728)

背景: The tetratricopeptide repeat (TPR) is a structural motif. It consists in a degenerate 34 amino acid sequence motif identified in a wide variety of proteins. It is found in tandem arrays of 3-16 motifs,[1] which form scaffolds to mediate protein-protein interactions and often the assembly of multiprotein complexes. These repeats usually fold together to produce a single, linear solenoid domain called TPR domain.

抗原: Fusion protein of human TTC23

经过测试的应用: ELISA, WB, IHC

推荐稀释比: IHC: 25-100;WB: 500-2000;ELISA: 2000-5000

种属反应性: Rabbit

克隆性: Rabbit Polyclonal

亚型: Immunogen-specific rabbit IgG

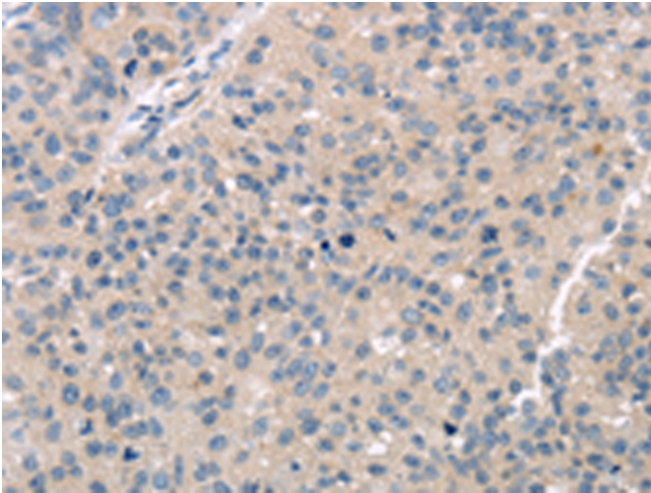
纯化: Antigen affinity purification

种属反应性: Human, Mouse

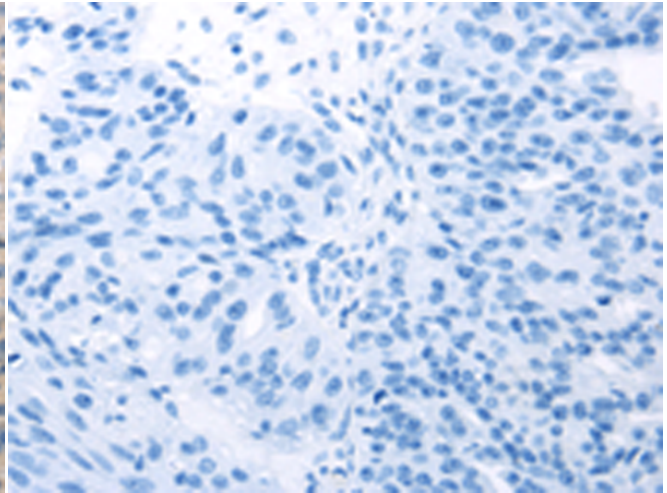
成分: PBS (without Mg²⁺ and Ca²⁺), pH 7.4, 150 mM NaCl, 0.05% Sodium Azide and 40% glycerol

研究领域: Epigenetics and Nuclear Signaling, Cancer

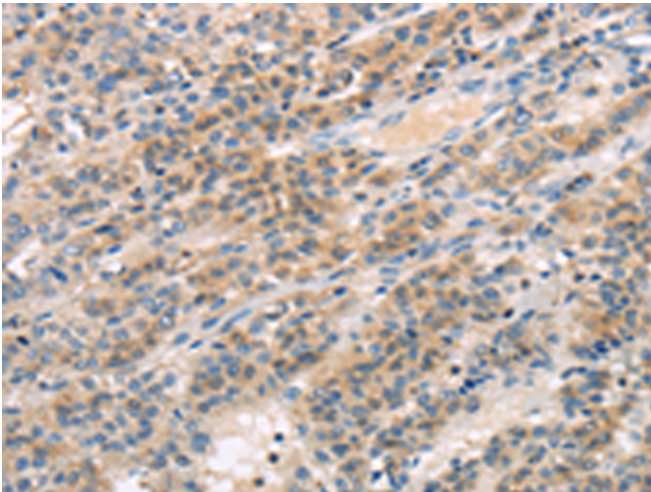
储存和运输: Store at -20°C. Avoid repeated freezing and thawing



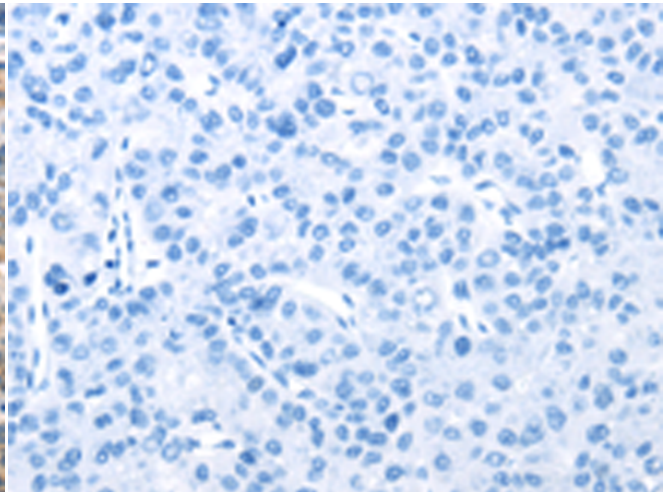
Immunohistochemistry analysis of paraffin embedded Human breast cancer tissue using 217954(TTC23 Antibody) at a dilution of 1/30(Cytoplasm).



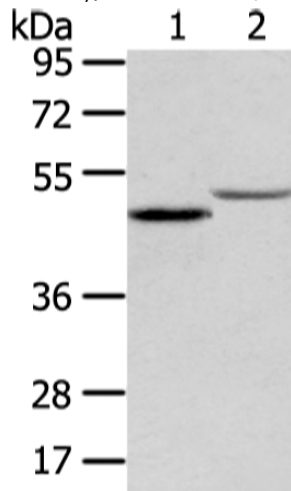
In comparison with the IHC on the left, the same paraffin-embedded Human breast cancer tissue is first treated with the fusion protein and then with 217954(Anti-TTC23 Antibody) at dilution 1/30.



The image on the left is immunohistochemistry of paraffin-embedded Human liver cancer tissue using 217954(Anti-TTC23 Antibody) at a dilution of 1/30.



In comparison with the IHC on the left, the same paraffin-embedded Human liver cancer tissue is first treated with fusion protein and then with D223438(Anti-TTC23 Antibody) at dilution 1/30.



Gel: 8%SDS-PAGE, Lysate: 40 µg;
Lane 1-2: Mouse adrenal gland and kidney tissue;
Primary antibody: 217954(TTC23 Antibody) at dilution 1/400;
Secondary antibody: Goat anti rabbit IgG at 1/8000 dilution;
Exposure time: 20 seconds



Product Description

Pioneering GTPase and Oncogene Product Development since 2010
