

TSPYL6 RABBIT PAB

货号: S221060

产品全名: TSPYL6 兔多抗

基因符号

UNIPROT ID: Q8N831 (Gene Accession - NP_001003937)

背景: TSPYL6 (Testis-specific Y-encoded-like protein 6) is a 410 amino acid member of the nucleosome assembly protein (NAP) family. TSPYL6 is believed to be similar to Testis-specific Y-encoded protein 1 in form and function. The gene that encodes TSPYL6 is found on chromosome 2 which consists of 237 million bases encoding over 1,400 genes and making up approximately 8% of the human genome. A number of genetic diseases are linked to genes on chromosome 2. The lipid metabolic disorder sitosterolemia is associated with ABCG5 and ABCG8. An extremely rare recessive genetic disorder, Alström syndrome is due to mutations in the ALMS1 gene.

抗原: Synthetic peptide of human TSPYL6

经过测试的应用: ELISA, IHC

推荐稀释比: IHC: 25-100; ELISA: 2000-5000

种属反应性: Rabbit

克隆性: Rabbit Polyclonal

亚型: Immunogen-specific rabbit IgG

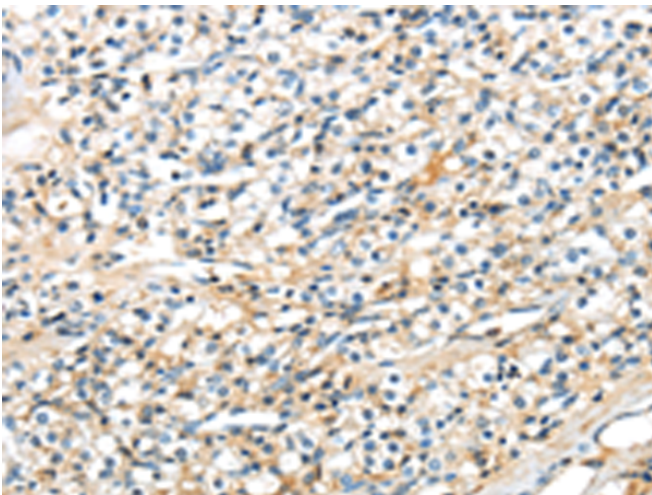
纯化: Antigen affinity purification

种属反应性: Human

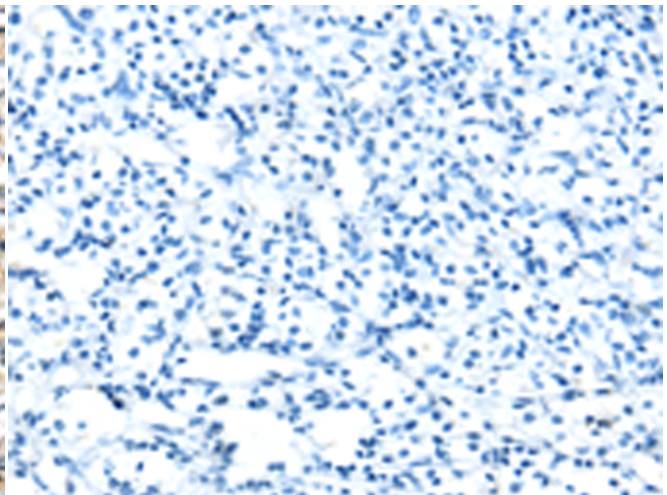
成分: PBS (without Mg²⁺ and Ca²⁺), pH 7.4, 150 mM NaCl, 0.05% Sodium Azide and 40% glycerol

研究领域: Epigenetics and Nuclear Signaling

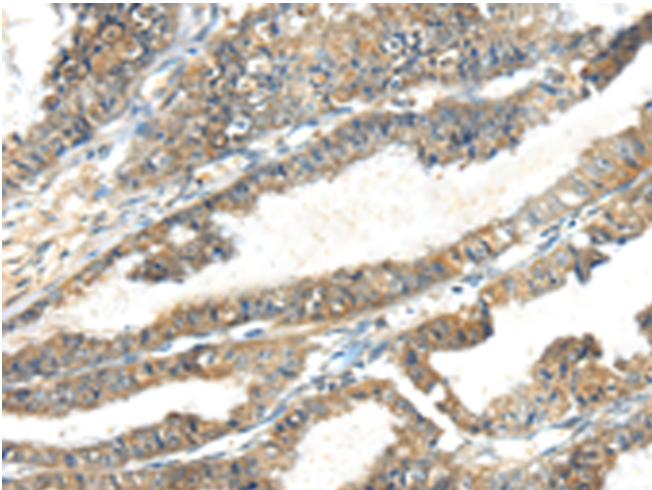
储存和运输: Store at -20°C. Avoid repeated freezing and thawing



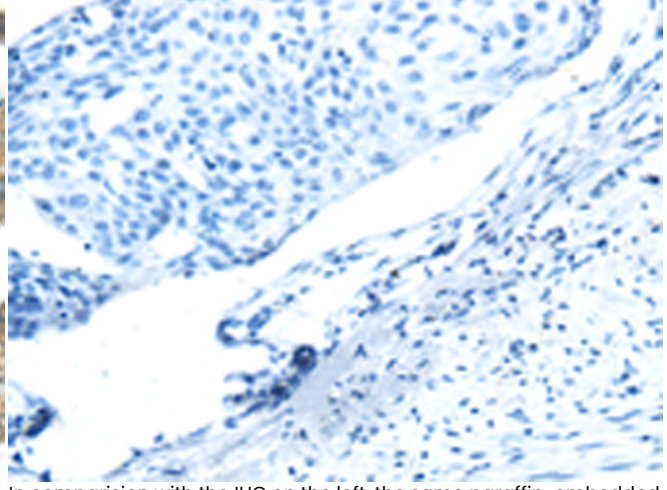
Immunohistochemistry analysis of paraffin embedded Human prostate cancer tissue using 221060(TSPYL6 Antibody) at a dilution of 1/20(Cytoplasm).



In comparison with the IHC on the left, the same paraffin-embedded Human prostate cancer tissue is first treated with the synthetic peptide and then with 221060(Anti-TSPYL6 Antibody) at dilution 1/20.



The image on the left is immunohistochemistry of paraffin-embedded Human esophagus cancer tissue using 221060(Anti-TSPYL6 Antibody) at a dilution of 1/20.



In comparison with the IHC on the left, the same paraffin-embedded Human esophagus cancer tissue is first treated with synthetic peptide and then with D262426(Anti-TSPYL6 Antibody) at dilution 1/20.



Product Description

Pioneering GTPase and Oncogene Product Development since 2010
