

TSC2 RABBIT PAB

货号: S221065

产品全名: TSC2 兔多抗

基因符号: LAM; TSC4; PPP1R160

UNIPROT ID: P49815 (Gene Accession - NP_000539)

背景: Mutations in this gene lead to tuberous sclerosis complex. Its gene product is believed to be a tumor suppressor and is able to stimulate specific GTPases. The protein associates with hamartin in a cytosolic complex, possibly acting as a chaperone for hamartin. Alternative splicing results in multiple transcript variants encoding different isoforms.

抗原: Synthetic peptide of human TSC2

经过测试的应用: ELISA, WB, IHC

推荐稀释比: IHC: Oct-50; WB: 200-1000; ELISA: 1000-2000

种属反应性: Rabbit

克隆性: Rabbit Polyclonal

亚型: Immunogen-specific rabbit IgG

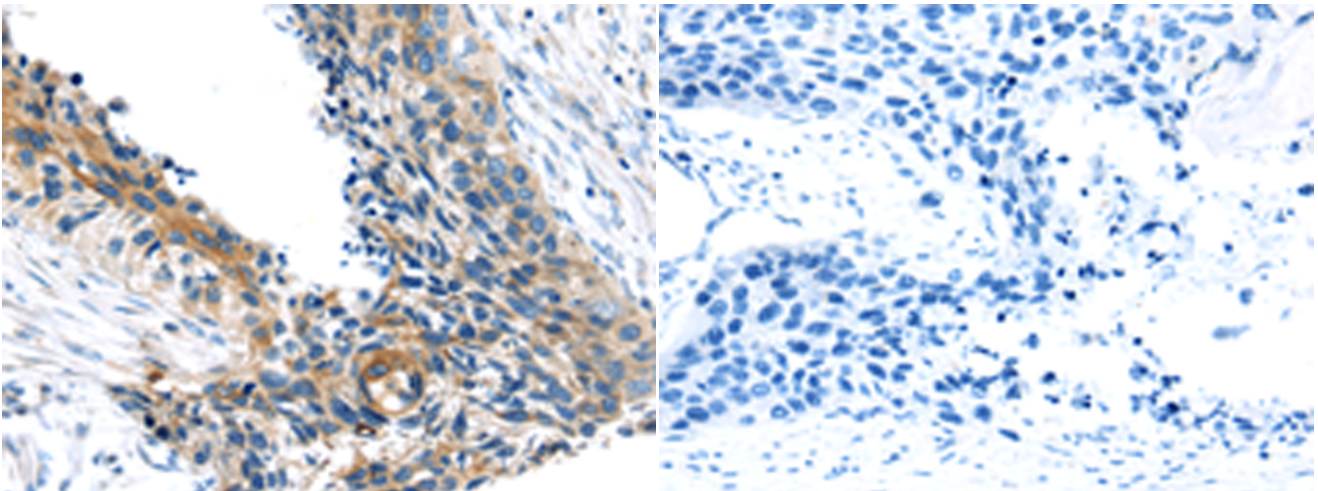
纯化: Antigen affinity purification

种属反应性: Human, Mouse, Rat

成分: PBS (without Mg²⁺ and Ca²⁺), pH 7.4, 150 mM NaCl, 0.05% Sodium Azide and 40% glycerol

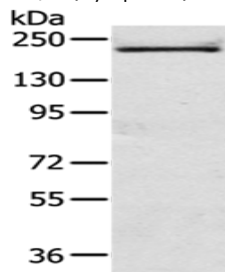
研究领域: Signal Transduction, Epigenetics and Nuclear Signaling, Metabolism, Cancer

储存和运输: Store at -20°C. Avoid repeated freezing and thawing



Immunohistochemistry analysis of paraffin embedded Human esophagus cancer tissue using 221065(TSC2 Antibody) at a dilution of 1/20(Cytoplasm).

In comparison with the IHC on the left, the same paraffin-embedded Human esophagus cancer tissue is first treated with the synthetic peptide and then with 221065(Anti-TSC2 Antibody) at dilution 1/20.



Gel: 6%SDS-PAGE, Lysate: 40 µg;

Lane: A172 cells;

Primary antibody: 221065(TSC2 Antibody) at dilution 1/200;

Secondary antibody: Goat anti rabbit IgG at 1/8000 dilution;

Exposure time: 5 minutes