

## TRPM8 RABBIT PAB

货号: S217602

产品全名: TRPM8 兔多抗

基因符号 TRPP8; LTRPC6

**UNIPROT ID:** Q7Z2W7 (Gene Accession - BC001135 )

**背景:** Transient receptor potential ion channels (TRPC) are a superfamily of six transmembrane segment-spanning gated cation channels. TRP subtypes mediate store-operated  $Ca^{2+}$  entry, a process involving  $Ca^{2+}$  influx and replenishment of  $Ca^{2+}$  stores formerly emptied through the action of inositol 1,4,5-trisphosphate production and other  $Ca^{2+}$  mobilizing agents.

**抗原:** Fusion protein of human TRPM8

**经过测试的应用:** ELISA, IHC

**推荐稀释比:** IHC: 25-100; ELISA: 1000-2000

**种属反应性:** Rabbit

**克隆性:** Rabbit Polyclonal

**亚型:** Immunogen-specific rabbit IgG

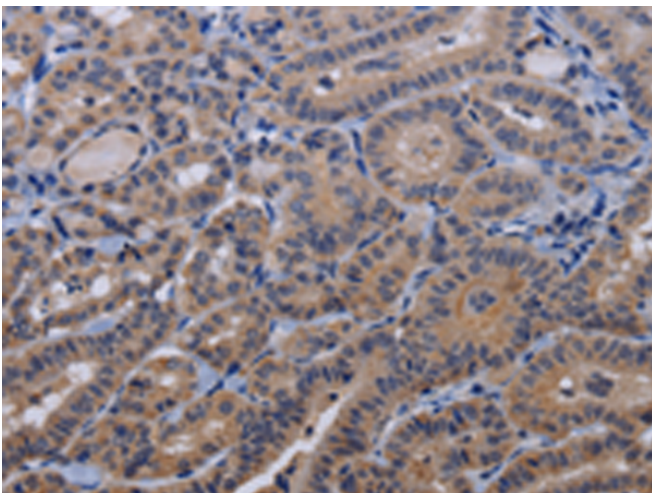
**纯化:** Antigen affinity purification

**种属反应性:** Human, Mouse, Rat

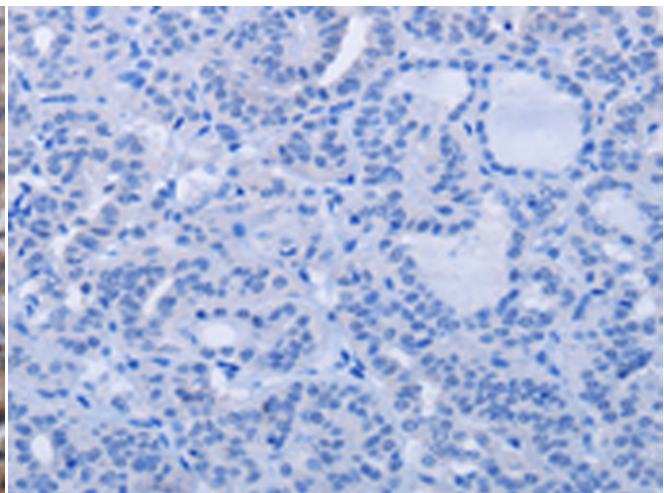
**成分:** PBS (without  $Mg^{2+}$  and  $Ca^{2+}$ ), pH 7.4, 150 mM NaCl, 0.05% Sodium Azide and 40% glycerol

**研究领域:** Metabolism, Neuroscience

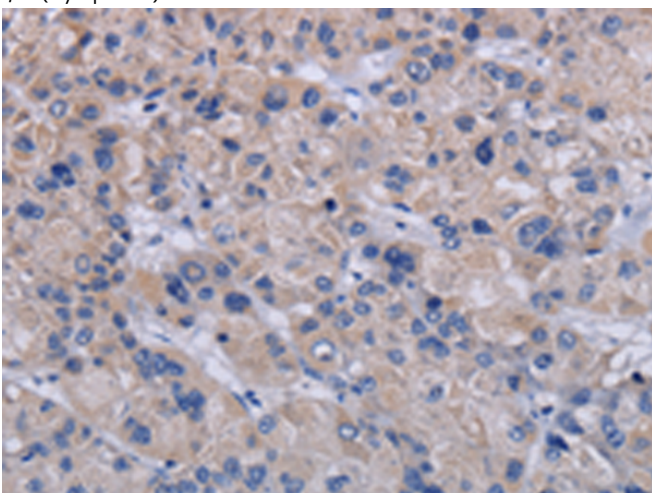
**储存和运输:** Store at  $-20^{\circ}C$ . Avoid repeated freezing and thawing



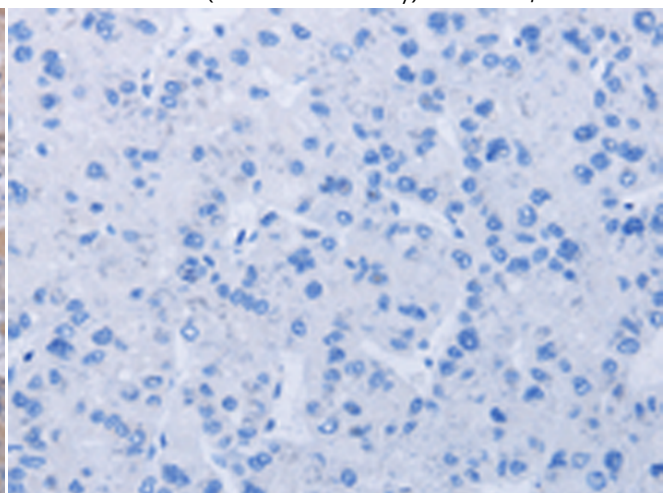
Immunohistochemistry analysis of paraffin embedded Human thyroid cancer tissue using 217602 (TRPM8 Antibody) at a dilution of 1/30 (Cytoplasm).



In comparison with the IHC on the left, the same paraffin-embedded Human thyroid cancer tissue is first treated with the fusion protein and then with 217602 (Anti-TRPM8 Antibody) at dilution 1/30.



The image on the left is immunohistochemistry of paraffin-embedded Human liver cancer tissue using 217602 (Anti-TRPM8 Antibody) at a dilution of 1/30.



In comparison with the IHC on the left, the same paraffin-embedded Human liver cancer tissue is first treated with fusion protein and then with D222681 (Anti-TRPM8 Antibody) at dilution 1/30.



# Product Description

Pioneering GTPase and Oncogene Product Development since 2010

---