

TRPM5 RABBIT PAB

货号: S214011

产品全名: TRPM5 兔多抗

基因符号: MTR1; LTRPC5

UNIPROT ID: Q9NZQ8 (Gene Accession - NP_055370)

背景: This gene encodes a member of the transient receptor potential (TRP) protein family, which is a diverse group of proteins with structural features typical of ion channels. This protein plays an important role in taste transduction, and has characteristics of a calcium-activated, non-selective cation channel that carries Na⁺, K⁺, and Cs⁺ ions equally well, but not Ca⁽²⁺⁾ ions. It is activated by lower concentrations of intracellular Ca⁽²⁺⁾, and inhibited by higher concentrations. It is also a highly temperature-sensitive, heat activated channel showing a steep increase of inward currents at temperatures between 15 and 35 degrees Celsius. This gene is located within the Beckwith-Wiedemann syndrome critical region-1 on chromosome 11p15.5, and has been shown to be imprinted, with exclusive expression from the paternal allele.

抗原: Synthetic peptide of human TRPM5

经过测试的应用: ELISA, WB, IHC

推荐稀释比: IHC: 50-200; WB: 500-2000; ELISA: 3000-10000

种属反应性: Rabbit

克隆性: Rabbit Polyclonal

亚型: Immunogen-specific rabbit IgG

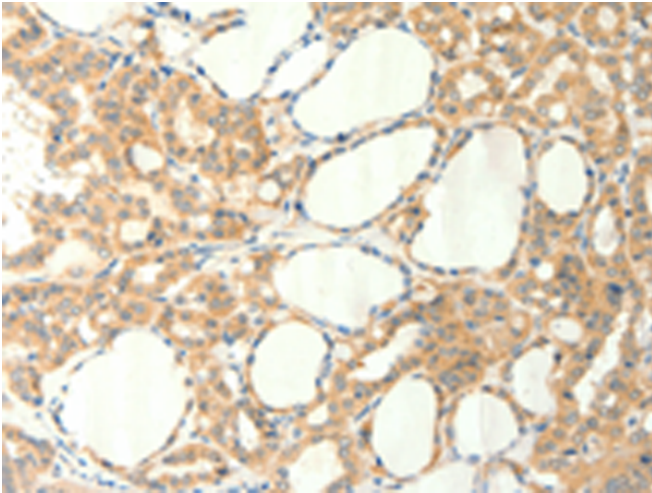
纯化: Antigen affinity purification

种属反应性: Human, Mouse

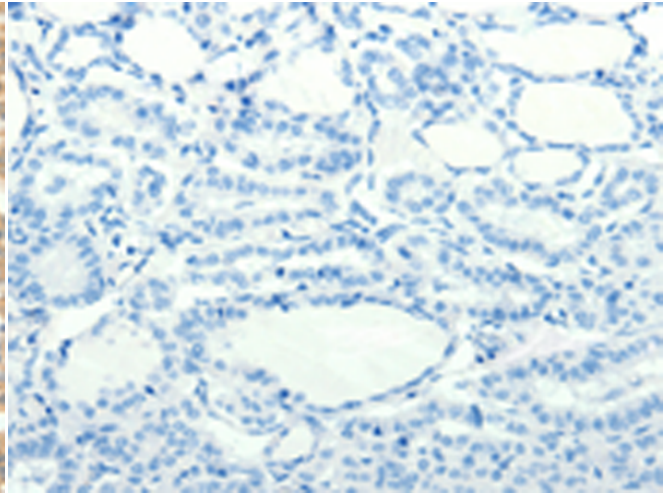
成分: PBS (without Mg²⁺ and Ca²⁺), pH 7.4, 150 mM NaCl, 0.05% Sodium Azide and 40% glycerol

研究领域: Neuroscience

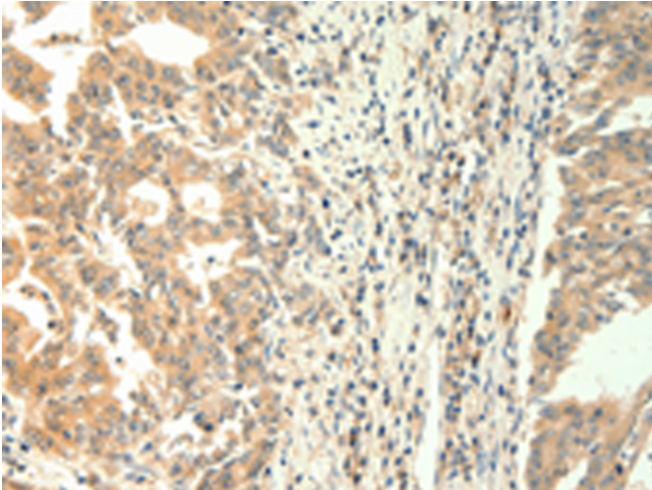
储存和运输: Store at -20°C. Avoid repeated freezing and thawing



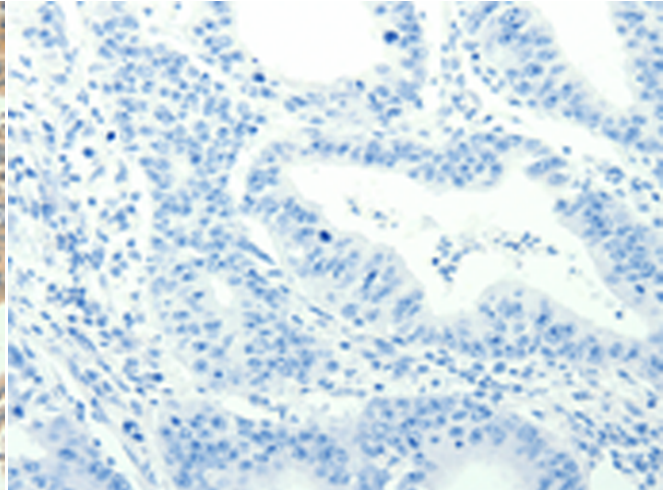
Immunohistochemistry analysis of paraffin embedded Human thyroid cancer tissue using 214011 (TRPM5 Antibody) at a dilution of 1/60 (Cytoplasm).



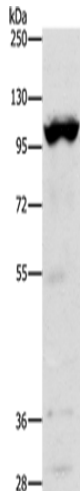
In comparison with the IHC on the left, the same paraffin-embedded Human thyroid cancer tissue is first treated with the synthetic peptide and then with 214011 (Anti-TRPM5 Antibody) at dilution 1/60.



The image on the left is immunohistochemistry of paraffin-embedded Human gastric cancer tissue using 214011 (Anti-TRPM5 Antibody) at a dilution of 1/60.



In comparison with the IHC on the left, the same paraffin-embedded Human gastric cancer tissue is first treated with synthetic peptide and then with D161187 (Anti-TRPM5 Antibody) at dilution 1/60.



Gel: 10% SDS-PAGE, Lysate: 40 μ g;
Lane: Mouse heart tissue;
Primary antibody: 214011 (TRPM5 Antibody) at dilution 1/1200;
Secondary antibody: Goat anti rabbit IgG at 1/8000 dilution;
Exposure time: 20 seconds



Product Description

Pioneering GTPase and Oncogene Product Development since 2010
