

## TRIM45 RABBIT PAB

货号: S221023

产品全名: TRIM45 兔多抗

基因符号: RNF99

**UNIPROT ID:** Q9H8W5 (Gene Accession - NP\_079464)

**背景:** This gene encodes a member of the tripartite motif family. The encoded protein may function as a transcriptional repressor of the mitogen-activated protein kinase pathway. Alternatively spliced transcript variants have been described.

**抗原:** Synthetic peptide of human TRIM45

**经过测试的应用:** ELISA, WB, IHC

**推荐稀释比:** IHC: 25-100;WB: 500-2000;ELISA: 2000-5000

**种属反应性:** Rabbit

**克隆性:** Rabbit Polyclonal

**亚型:** Immunogen-specific rabbit IgG

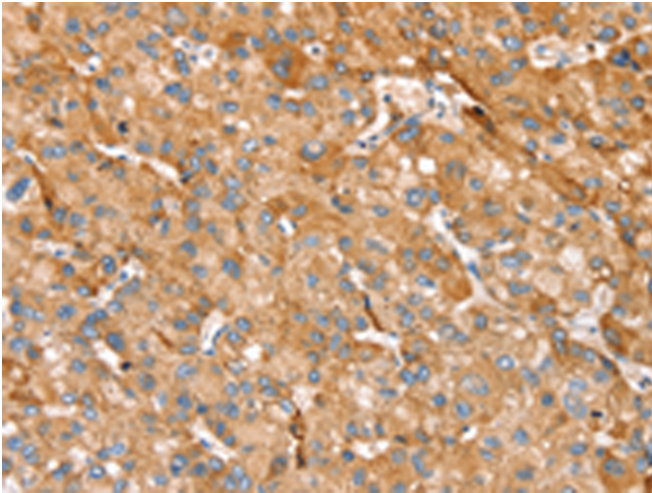
**纯化:** Antigen affinity purification

**种属反应性:** Human, Mouse

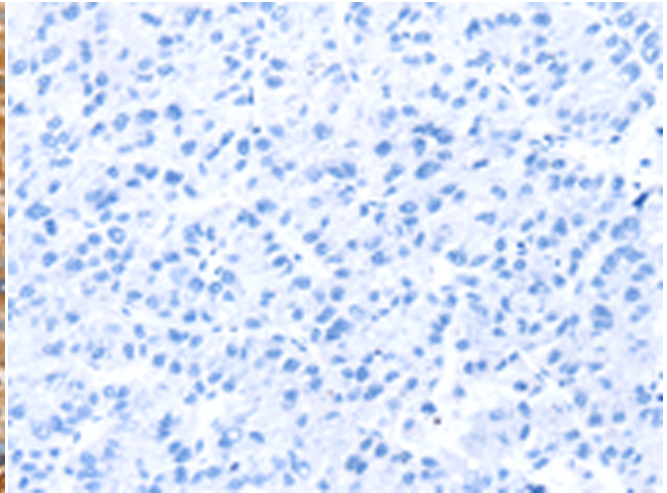
**成分:** PBS (without Mg<sup>2+</sup> and Ca<sup>2+</sup>), pH 7.4, 150 mM NaCl, 0.05% Sodium Azide and 40% glycerol

**研究领域:** Epigenetics and Nuclear Signaling

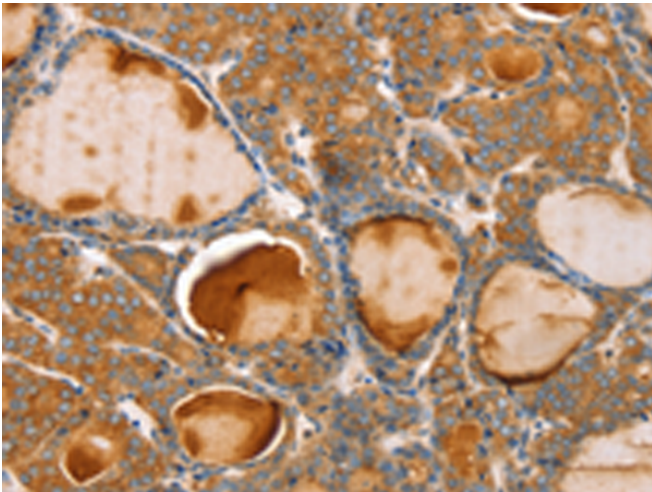
**储存和运输:** Store at -20°C. Avoid repeated freezing and thawing



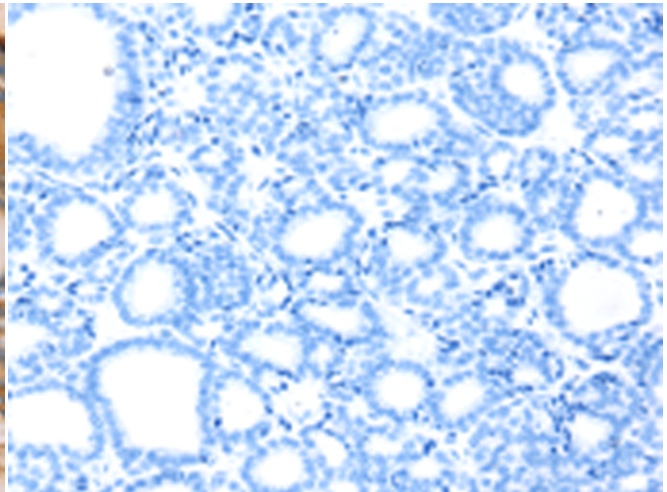
Immunohistochemistry analysis of paraffin embedded Human liver cancer tissue using 221023 (TRIM45 Antibody) at a dilution of 1/25 (Cytoplasm).



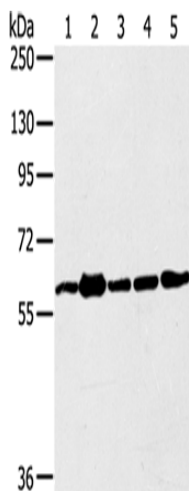
In comparison with the IHC on the left, the same paraffin-embedded Human liver cancer tissue is first treated with the synthetic peptide and then with 221023 (Anti-TRIM45 Antibody) at dilution 1/25.



The image on the left is immunohistochemistry of paraffin-embedded Human thyroid cancer tissue using 221023 (Anti-TRIM45 Antibody) at a dilution of 1/25.



In comparison with the IHC on the left, the same paraffin-embedded Human thyroid cancer tissue is first treated with synthetic peptide and then with D262369 (Anti-TRIM45 Antibody) at dilution 1/25.



Gel: 6% SDS-PAGE, Lysate: 40 µg;  
Lane 1-5: 231 cells, Jurkat cells, A549 cells, hela cells, 293T cells;  
Primary antibody: 221023 (TRIM45 Antibody) at dilution 1/400;  
Secondary antibody: Goat anti rabbit IgG at 1/8000 dilution;  
Exposure time: 1 minute



# Product Description

Pioneering GTPase and Oncogene Product Development since 2010

---