

## TRIM24 RABBIT PAB

货号: S221014

产品全名: TRIM24 兔多抗

基因符号: PTC6; TFIA; TIF1; RNF82; TIFIA; hTIF1; TIF1ALPHA

UNIPROT ID: O15164 (Gene Accession - NP\_056989)

背景: The protein encoded by this gene mediates transcriptional control by interaction with the activation function 2 (AF2) region of several nuclear receptors, including the estrogen, retinoic acid, and vitamin D3 receptors. The protein localizes to nuclear bodies and is thought to associate with chromatin and heterochromatin-associated factors. The protein is a member of the tripartite motif (TRIM) family. The TRIM motif includes three zinc-binding domains - a RING, a B-box type 1 and a B-box type 2 - and a coiled-coil region.

抗原: Synthetic peptide of human TRIM24

经过测试的应用: ELISA, WB, IHC

推荐稀释比: IHC: 30-150; WB: 500-2000; ELISA: 2000-5000

种属反应性: Rabbit

克隆性: Rabbit Polyclonal

亚型: Immunogen-specific rabbit IgG

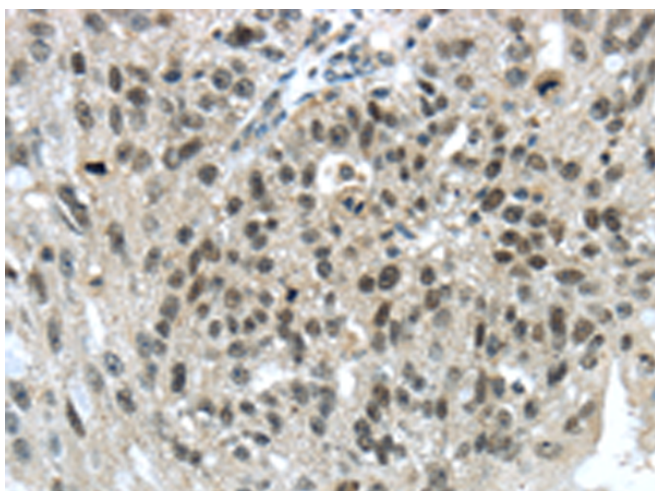
纯化: Antigen affinity purification

种属反应性: Human, Mouse

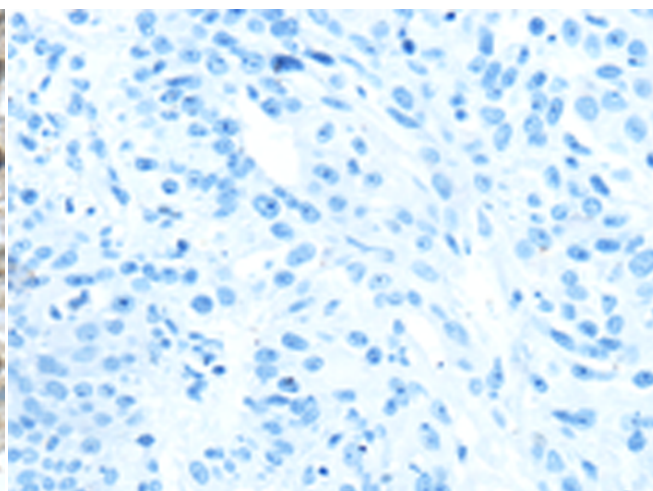
成分: PBS (without Mg<sup>2+</sup> and Ca<sup>2+</sup>), pH 7.4, 150 mM NaCl, 0.05% Sodium Azide and 40% glycerol

研究领域: Signal Transduction, Epigenetics and Nuclear Signaling

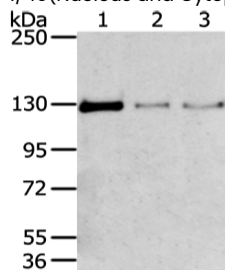
储存和运输: Store at -20°C. Avoid repeated freezing and thawing



Immunohistochemistry analysis of paraffin embedded Human breast cancer tissue using 221014 (TRIM24 Antibody) at a dilution of 1/40 (Nucleus and Cytoplasm).



In comparison with the IHC on the left, the same paraffin-embedded Human breast cancer tissue is first treated with the synthetic peptide and then with 221014 (Anti-TRIM24 Antibody) at dilution 1/40.



Gel: 6% SDS-PAGE, Lysate: 80 µg;

Lane 1-3: 293T, 231 and lo2 cell;

Primary antibody: 221014 (TRIM24 Antibody) at dilution 1/400;

Secondary antibody: Goat anti rabbit IgG at 1/8000 dilution;

Exposure time: 1 minute