

TRIB1 RABBIT PAB

货号: S221053

产品全名: TRIB1 兔多抗

基因符号: C8FW; GIG2; TRIB1; GIG-2; SKIPI; TRB-1

UNIPROT ID: Q96RU8 (Gene Accession - NP_079471)

背景: Interacts with MAPK kinases and regulates activation of MAP kinases. May not display kinase activity.

抗原: Synthetic peptide of human TRIB1

经过测试的应用: ELISA, IHC

推荐稀释比: IHC: Oct-50; ELISA: 1000-2000

种属反应性: Rabbit

克隆性: Rabbit Polyclonal

亚型: Immunogen-specific rabbit IgG

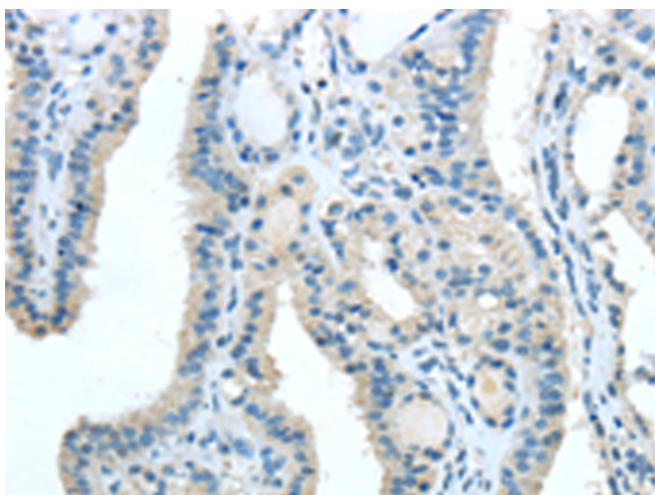
纯化: Antigen affinity purification

种属反应性: Human, Mouse

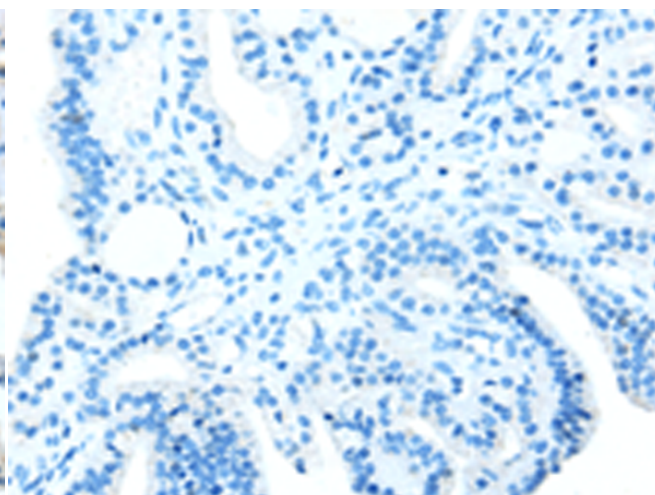
成分: PBS (without Mg²⁺ and Ca²⁺), pH 7.4, 150 mM NaCl, 0.05% Sodium Azide and 40% glycerol

研究领域: Signal Transduction, Cardiovascular, Stem Cells

储存和运输: Store at -20°C. Avoid repeated freezing and thawing



Immunohistochemistry analysis of paraffin embedded Human thyroid cancer tissue using 221053(TRIB1 Antibody) at a dilution of 1/20(Cytoplasm).



In comparison with the IHC on the left, the same paraffin-embedded Human thyroid cancer tissue is first treated with the synthetic peptide and then with 221053(Anti-TRIB1 Antibody) at dilution 1/20.