

## TREX1 RABBIT MAB

货号: N261623

产品全名: TREX1 兔单克隆抗体

基因符号 AGS1; AGS5; CRV; DNase III; DRN3; HERNS; TREX1

**UNIPROT ID:** Q9NSU2

背景: TREX1 is the major 3'→5' DNA exonuclease in human cells. The protein is a non processive exonuclease that may serve a proofreading function for a human DNA polymerase.

抗原: Recombinant protein of human TREX1

经过测试的应用: WB,IHC-F,IHC-P,ICC/IF

推荐稀释比: WB: 1/500-1/1000 IHC: 1/50-1/100 IF: 1/50-1/200

种属反应性: Rabbit

克隆性: Rabbit Monoclonal

克隆编号: R05-1D6

分子量: Calculated MW: 33 kDa; Observed MW: 33 kDa

亚型: IgG

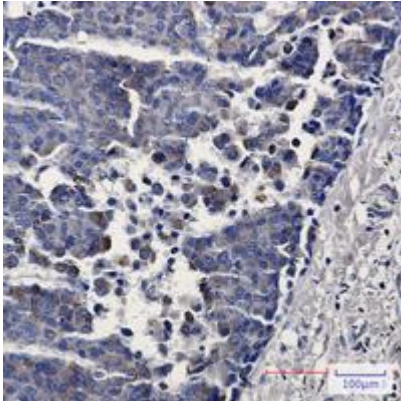
纯化: Affinity Purified

种属反应性: Human

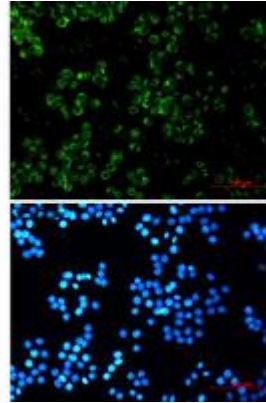
成分: PBS (without Mg<sup>2+</sup> and Ca<sup>2+</sup>), pH 7.3 containing 50% glycerol, 0.5% BSA and 0.02% sodium azide

研究领域: Epigenetics and Nuclear Signaling

储存和运输: Store at -20°C. Avoid repeated freezing and thawing



Immunohistochemistry analysis of paraffin-embedded Human breast cancer tissue using TREX1 antibody. High-pressure and temperature Sodium Citrate pH 6.0 was used for antigen retrieval.



Immunocytochemistry analysis of TREX1 (green) in Hela using TREX1 antibody, and DAPI (blue).



Western blot analysis of TREX1 in Hela lysates using TREX1 antibody.