

## TREM2 RABBIT PAB

货号: N226082

产品全名: TREM2 兔多抗

基因符号: TREM2; TREM-2; Trem2a; Trem2b; Trem2c; triggering receptor expressed on myeloid cells 2

UNIPROT ID: Q9NZC2

背景: This gene encodes a membrane protein that forms a receptor signaling complex with the TYRO protein tyrosine kinase binding protein. The encoded protein functions in immune response and may be involved in chronic inflammation by triggering the production of constitutive inflammatory cytokines. Defects in this gene are a cause of polycystic lipomembranous osteodysplasia with sclerosing leukoencephalopathy (PLOS1). Alternative splicing results in multiple transcript variants encoding different isoforms.

抗原: Recombinant fusion protein containing a sequence corresponding to amino acids 19-160 of human TREM2

(NP\_061838.1).HNTTVFQGVAGQSLQVSCPYDSMKHWGRRKAWCRQLGEGPCQRVSTHNLWLLSFLRRWNGSTAITDDTLGGTLITLRNLQPHDAGLYQCQSLHGSEADTLRKVLVEVLADPLDRDAGDLWFPGESESFEDAHVHSHS

经过测试的应用: WB,IHC-P,IJC/IF

推荐稀释比: WB: 1/500-1/1000 IHC: 1/50-1/100 IF: 1/50-1/200

种属反应性: Rabbit

克隆性: Rabbit Polyclonal

分子量: Calculated MW: 25 kDa; Observed MW: 25-35-50 kDa

亚型: IgG

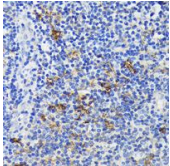
纯化: Affinity Purified

种属反应性: Human, Mouse and Rat

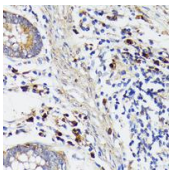
成分: PBS (without Mg<sup>2+</sup> and Ca<sup>2+</sup>), pH 7.3 containing 50% glycerol, 0.5% BSA and 0.02% sodium azide

研究领域: Immunology

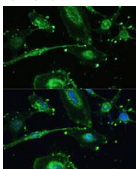
储存和运输: Store at -20°C. Avoid repeated freezing and thawing



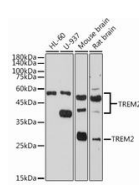
Immunohistochemistry analysis of paraffin-embedded Human tonsil using TREM2 antibody. High-pressure and temperature Sodium Citrate pH 6.0 was used for antigen retrieval.



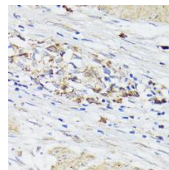
Immunohistochemistry analysis of paraffin-embedded Human colon carcinoma using TREM2 antibody. High-pressure and temperature Sodium Citrate pH 6.0 was used for antigen retrieval.



Immunofluorescence analysis of TREM2 in U251MG using TREM2 antibody, and DAPI (blue).



Western blot analysis of TREM2 in various cell lines lysates using TREM2 antibody.



Immunohistochemistry analysis of paraffin-embedded Human gastric cancer using TREM2 antibody. High-pressure and temperature Sodium Citrate pH 6.0 was used for antigen retrieval.