

TRARG1 RABBIT PAB

货号: S221067

产品全名: TRARG1 兔多抗

基因符号: BEC-1; DSPB1; LOST1; TUSC5; IFITMD3

UNIPROT ID: Q8IXB3 (Gene Accession - NP_758955)

背景: Regulates insulin-mediated adipose tissue glucose uptake and transport by modulation of SLC2A4 recycling. Not required for SLC2A4 membrane fusion upon an initial stimulus, but rather is necessary for proper protein recycling during prolonged insulin stimulation.

抗原: Synthetic peptide of human TRARG1

经过测试的应用: ELISA, IHC

推荐稀释比: IHC: 30-150; ELISA: 2000-10000

种属反应性: Rabbit

克隆性: Rabbit Polyclonal

亚型: Immunogen-specific rabbit IgG

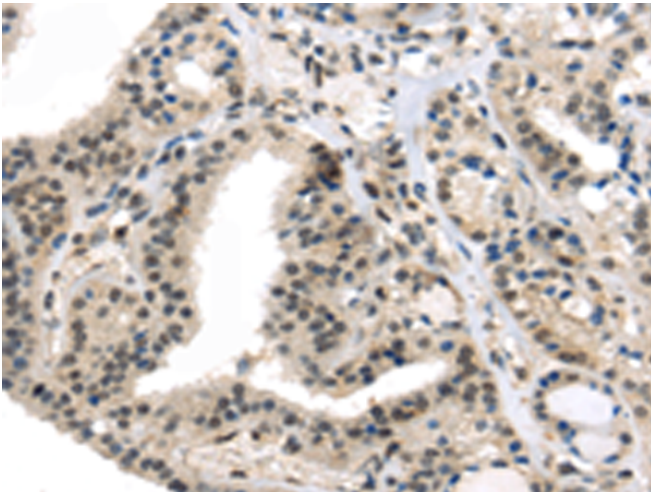
纯化: Antigen affinity purification

种属反应性: Human, Mouse, Rat

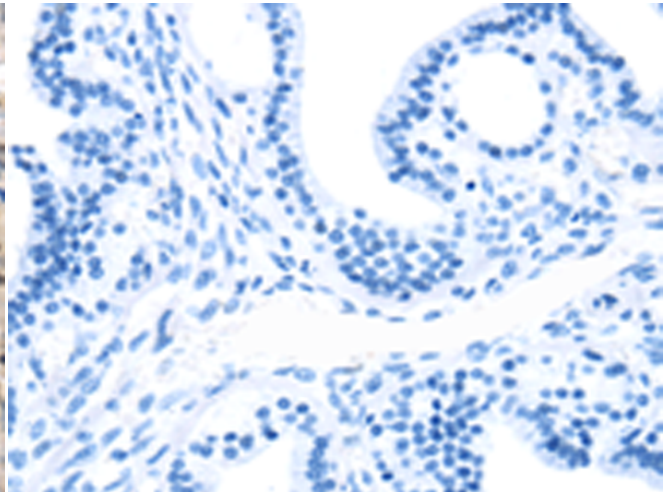
成分: PBS (without Mg²⁺ and Ca²⁺), pH 7.4, 150 mM NaCl, 0.05% Sodium Azide and 40% glycerol

研究领域: Metabolism, Cancer

储存和运输: Store at -20°C. Avoid repeated freezing and thawing



Immunohistochemistry analysis of paraffin embedded Human thyroid cancer tissue using 221067 (TRARG1 Antibody) at a dilution of 1/50 (Cytoplasm and Nucleus).



In comparison with the IHC on the left, the same paraffin-embedded Human thyroid cancer tissue is first treated with the synthetic peptide and then with 221067 (Anti-TRARG1 Antibody) at dilution 1/50.