

TRAPPC4 RABBIT PAB

货号: S218180

产品全名: TRAPPC4 兔多抗

基因符号 SBDN; TRS23; PTD009; CGI-104; HSPC172; SYNBINDIN

UNIPROT ID: Q9Y296 (Gene Accession - BC010866)

背景: May play a role in vesicular transport from endoplasmic reticulum to Golgi.

抗原: Fusion protein of human TRAPPC4

经过测试的应用: ELISA, WB, IHC

推荐稀释比: IHC: 100-200;WB: 500-2000;ELISA: 5000-10000

种属反应性: Rabbit

克隆性: Rabbit Polyclonal

亚型: Immunogen-specific rabbit IgG

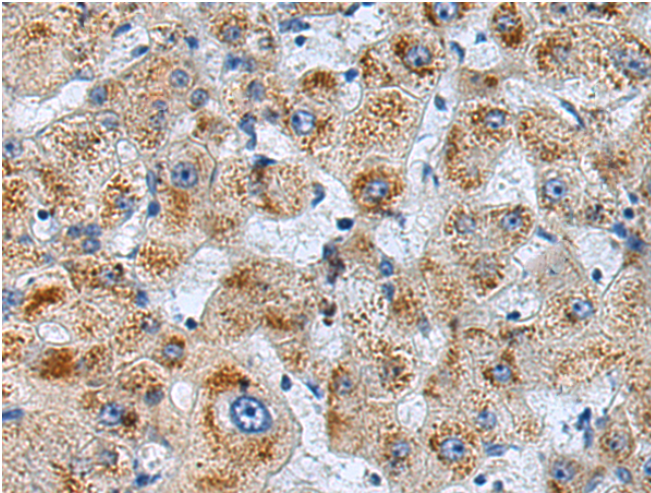
纯化: Antigen affinity purification

种属反应性: Human, Mouse, Rat

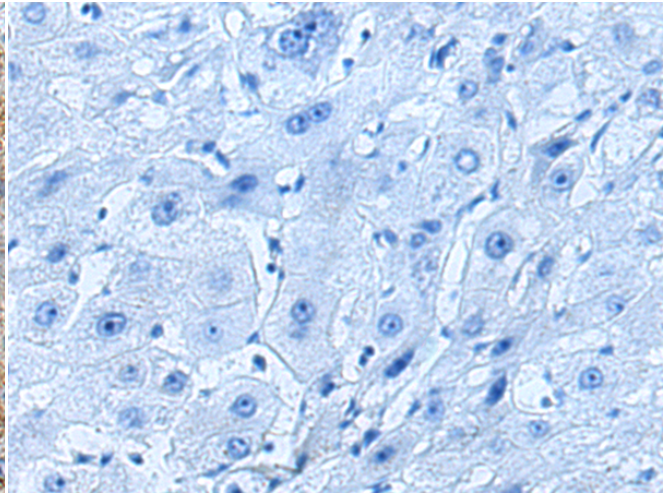
成分: PBS (without Mg²⁺ and Ca²⁺), pH 7.4, 150 mM NaCl, 0.05% Sodium Azide and 40% glycerol

研究领域: Signal Transduction

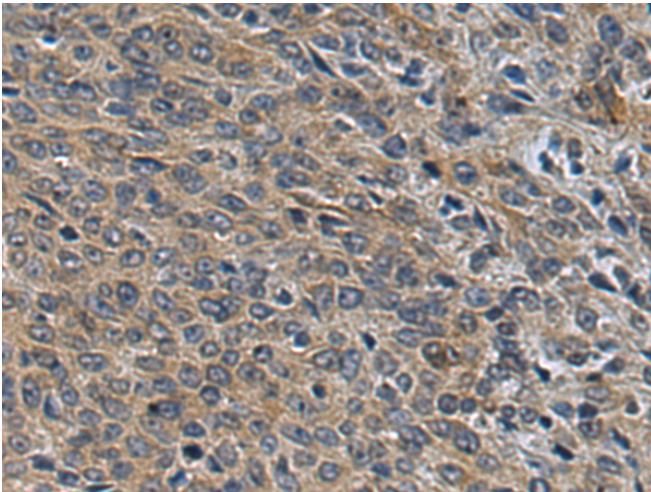
储存和运输: Store at -20°C. Avoid repeated freezing and thawing



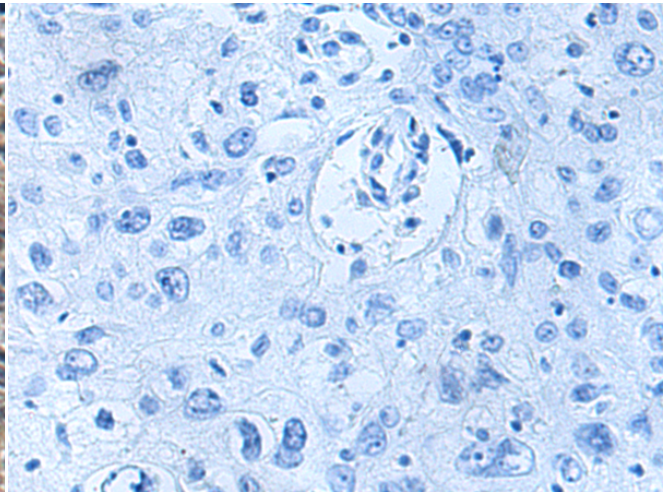
Immunohistochemistry analysis of paraffin embedded Human liver cancer tissue using 218180 (TRAPPC4 Antibody) at a dilution of 1/90 (Cytoplasm).



In comparison with the IHC on the left, the same paraffin-embedded Human liver cancer tissue is first treated with the fusion protein and then with 218180 (Anti-TRAPPC4 Antibody) at dilution 1/90.

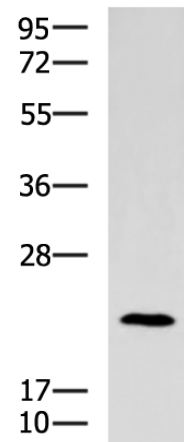


The image on the left is immunohistochemistry of paraffin-embedded Human cervical cancer tissue using 218180 (Anti-TRAPPC4 Antibody) at a dilution of 1/90.



In comparison with the IHC on the left, the same paraffin-embedded Human cervical cancer tissue is first treated with fusion protein and then with D223893 (Anti-TRAPPC4 Antibody) at dilution 1/90.

kDa



Gel: 12% SDS-PAGE, Lysate: 40 µg;
Lane: Human bladder transitional cell carcinoma cancer next level
2-3 tissue lysate;
Primary antibody: 218180 (TRAPPC4 Antibody) at dilution 1/700;
Secondary antibody: HRP-conjugated Goat anti rabbit IgG at 1/5000
dilution;
Exposure time: 30 seconds

