

TRANSMEMBRANE PROTEIN 161B RABBIT MAB

货号: N262998

产品全名: Transmembrane Protein 161B 兔单克隆抗体

基因符号 Transmembrane protein 161B

UNIPROT ID: Q8NDZ6

背景: Essential for maintaining normal cardiac rhythm in the developing heart and for neonatal survival (By similarity).

抗原: Recombinant protein of human TMEM161B

经过测试的应用: WB,IP

推荐稀释比: WB: 1/500-1/1000 IP: 1/20

种属反应性: Rabbit

克隆性: Rabbit Monoclonal

克隆编号: R08-6J4

分子量: Calculated MW: 55 kDa; Observed MW: 55 kDa

亚型: IgG

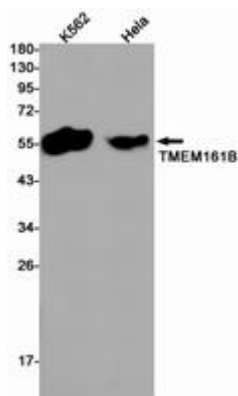
纯化: Affinity Purified

种属反应性: Human

成分: PBS (without Mg²⁺ and Ca²⁺), pH 7.3 containing 50% glycerol, 0.5% BSA and 0.02% sodium azide

研究领域: Cell Biology

储存和运输: Store at -20°C. Avoid repeated freezing and thawing



Western blot analysis of TMEM161B in K562, HeLa lysates using Transmembrane Protein 161B antibody.