

TPX2 RABBIT MAB

货号: N263585

产品全名: TPX2 兔单克隆抗体

基因符号 DIL2; p100; DIL-2; HCTP4; FLS353; HCA519; REPP86; C20orf1;
C20orf2; GD:C20orf1

UNIPROT ID: Q9ULW0

背景: Spindle assembly factor. Required for normal assembly of mitotic spindles. Required for normal assembly of microtubules during apoptosis. Required for chromatin and/or kinetochore dependent microtubule nucleation. Mediates AURKA localization to spindle microtubules. Activates AURKA by promoting its autophosphorylation at 'Thr-288' and protects this residue against dephosphorylation.

抗原: Recombinant protein of human TPX2

经过测试的应用: WB, ICC/IF

推荐稀释比: WB: 1/500-1/1000 IF: 1/50-1/200

种属反应性: Rabbit

克隆性: Rabbit Monoclonal

克隆编号: R05-1B5

分子量: Calculated MW: 86 kDa; Observed MW: 100 kDa

亚型: IgG

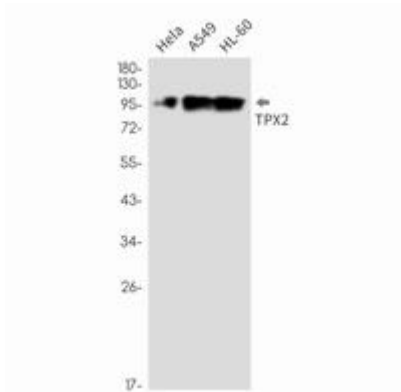
纯化: Affinity Purified

种属反应性: Human

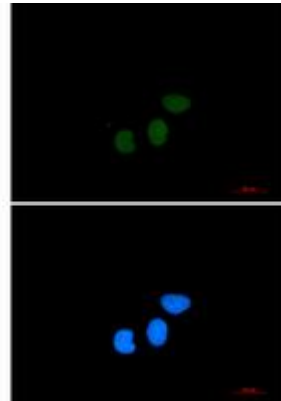
成分: PBS (without Mg²⁺ and Ca²⁺), pH 7.3 containing 50% glycerol, 0.5% BSA and 0.02% sodium azide

研究领域: Cell Biology

储存和运输: Store at -20°C. Avoid repeated freezing and thawing



Western blot analysis of TPX2 in HeLa, A549, HL-60 lysates using TPX2 antibody.



Immunocytochemistry analysis of TPX2 (green) in HeLa using TPX2 antibody, and DAPI (blue).