

TPT1 RABBIT PAB

货号: S217887

产品全名: TPT1 兔多抗

基因符号: HRF; p02; p23; TCTP

UNIPROT ID: P13693 (Gene Accession - BC003352)

背景: Involved in calcium binding and microtubule stabilization.

抗原: Full length fusion 蛋白

经过测试的应用: ELISA, WB, IHC

推荐稀释比: IHC: 45-300;WB: 1000-5000;ELISA: 5000-10000

种属反应性: Rabbit

克隆性: Rabbit Polyclonal

亚型: Immunogen-specific rabbit IgG

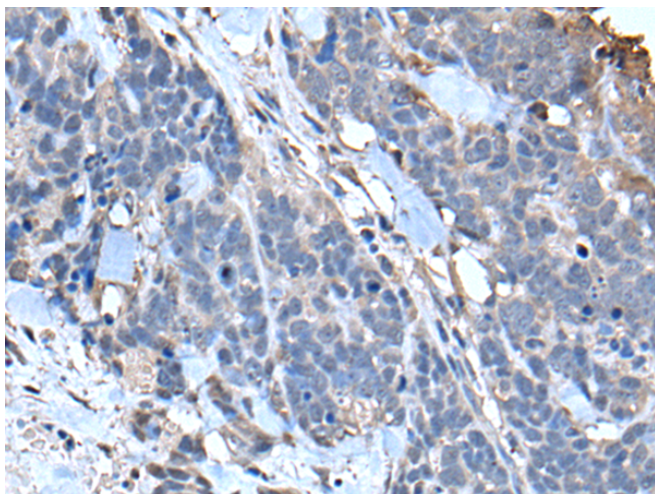
纯化: Antigen affinity purification

种属反应性: Human, Mouse, Rat

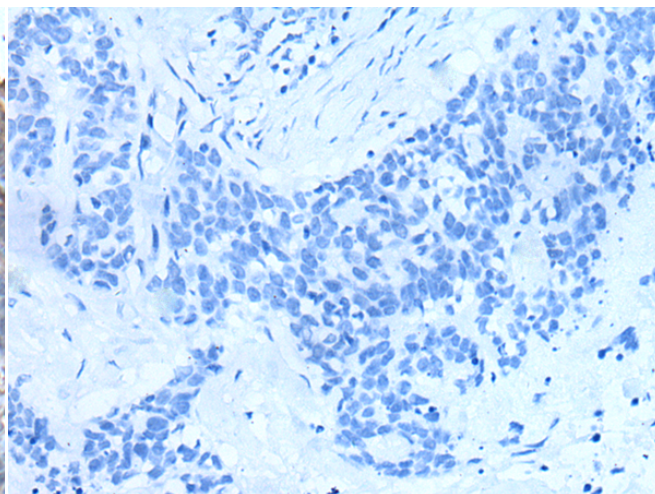
成分: PBS (without Mg²⁺ and Ca²⁺), pH 7.4, 150 mM NaCl, 0.05% Sodium Azide and 40% glycerol

研究领域: Immunology

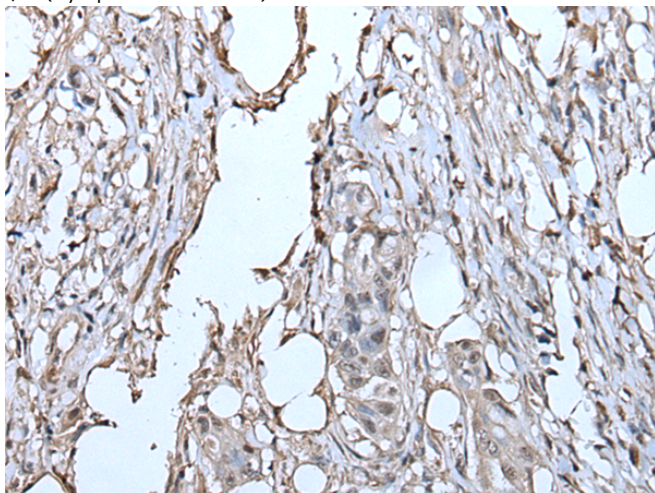
储存和运输: Store at -20°C. Avoid repeated freezing and thawing



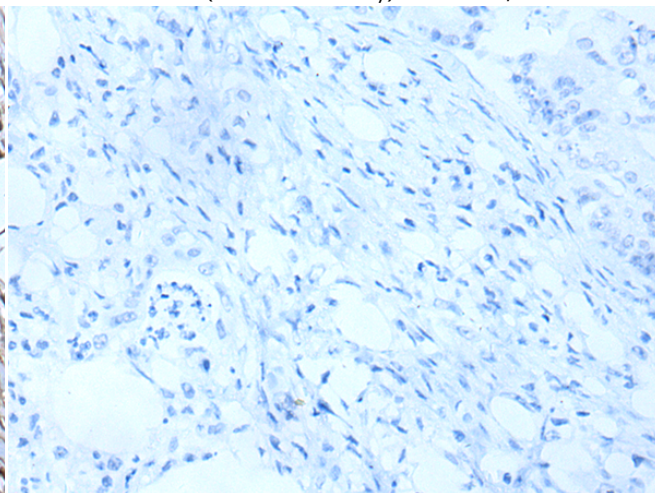
Immunohistochemistry analysis of paraffin embedded Human thyroid cancer tissue using 217887(TPT1 Antibody) at a dilution of 1/85(Cytoplasm or Nucleus).



In comparison with the IHC on the left, the same paraffin-embedded Human thyroid cancer tissue is first treated with the fusion protein and then with 217887(Anti-TPT1 Antibody) at dilution 1/85.

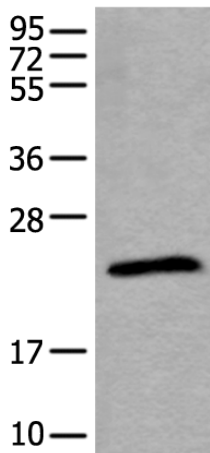


The image on the left is immunohistochemistry of paraffin-embedded Human colorectal cancer tissue using 217887(Anti-TPT1 Antibody) at a dilution of 1/85.



In comparison with the IHC on the left, the same paraffin-embedded Human colorectal cancer tissue is first treated with fusion protein and then with D223303(Anti-TPT1 Antibody) at dilution 1/85.

kDa



Gel: 12%SDS-PAGE, Lysate: 40 µg;

Lane: Jurkat cell lysate;

Primary antibody: 217887(TPT1 Antibody) at dilution 1/800;

Secondary antibody: Goat anti rabbit IgG at 1/8000 dilution;

Exposure time: 20 seconds



Product Description

Pioneering GTPase and Oncogene Product Development since 2010
