

TPP1 RABBIT MAB

货号: N263011

产品全名: TPP1 兔单克隆抗体

基因符号 CLN2; GIG1; LPIC; SCAR7; TPP-1

UNIPROT ID: O14773

背景: Lysosomal serine protease with tripeptidyl-peptidase I activity. May act as a non-specific lysosomal peptidase which generates tripeptides from the breakdown products produced by lysosomal proteinases. Requires substrates with an unsubstituted N-terminus .

抗原: Recombinant protein of human TPP1

经过测试的应用: WB,IHC-P

推荐稀释比: WB: 1/500-1/1000 IHC: 1/50-1/100

种属反应性: Rabbit

克隆性: Rabbit Monoclonal

克隆编号: R09-2G9

分子量: Calculated MW: 61 kDa; Observed MW: 61,48 kDa

亚型: IgG

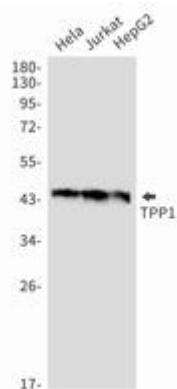
纯化: Affinity Purified

种属反应性: Human

成分: PBS (without Mg²⁺ and Ca²⁺), pH 7.3 containing 50% glycerol, 0.5% BSA and 0.02% sodium azide

研究领域: Neuroscience

储存和运输: Store at -20°C. Avoid repeated freezing and thawing



Western blot analysis of TPP1 in Hela, Jurkat, HepG2 lysates using TPP1 antibody.



Product Description

Pioneering GTPase and Oncogene Product Development since 2010
