

## TP63 RABBIT PAB

货号: S210508

产品全名: TP63 兔多抗

基因符号: AIS, KET, LMS, NBP, RHS, p40, p51, p63, EEC3, OFC8, p73H, p73L, SHFM4, TP53L, TP73L, p53CP, TP53CP, B(p51A), B(p51B)

**UNIPROT ID:** Q9H3D4 (Gene Accession - BC039815)

**背景:** This gene encodes a member of the p53 family of transcription factors. An animal model, p63  $-/-$  mice, has been useful in defining the role this protein plays in the development and maintenance of stratified epithelial tissues. p63  $-/-$  mice have several developmental defects which include the lack of limbs and other tissues, such as teeth and mammary glands, which develop as a result of interactions between mesenchyme and epithelium. Mutations in this gene are associated with ectodermal dysplasia, and cleft lip/palate syndrome 3 (EEC3); split-hand/foot malformation 4 (SHFM4); ankyloblepharon-ectodermal defects-cleft lip/palate; ADULT syndrome (acro-dermato-ungual-lacrima-tooth); limb-mammary syndrome; Rap-Hodgkin syndrome (RHS); and orofacial cleft 8. Both alternative splicing and the use of alternative promoters results in multiple transcript variants encoding different proteins.

**抗原:** Fusion protein of human TP63

**经过测试的应用:** ELISA, WB, IHC

**推荐稀释比:** IHC: 25-100;WB: 200-1000;ELISA: 1000-2000

**种属反应性:** Rabbit

**克隆性:** Rabbit Polyclonal

**亚型:** Immunogen-specific rabbit IgG

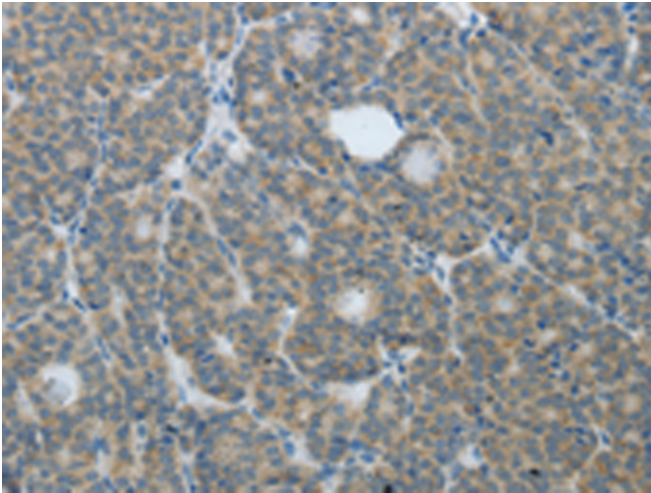
**纯化:** Antigen affinity purification

**种属反应性:** Human, Mouse, Rat

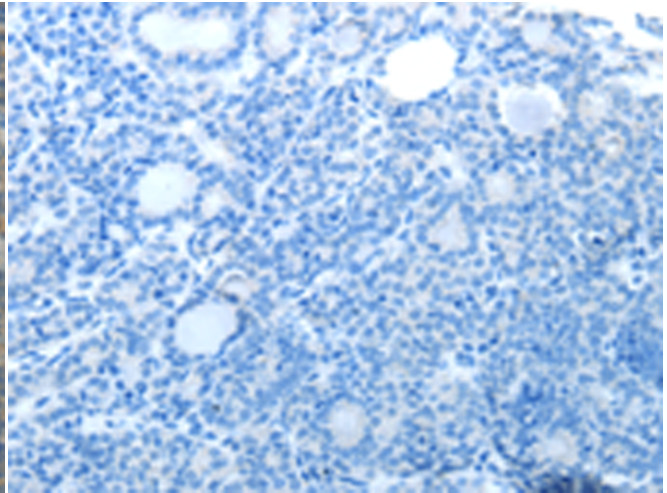
**成分:** PBS (without Mg<sup>2+</sup> and Ca<sup>2+</sup>), pH 7.4, 150 mM NaCl, 0.05% Sodium Azide and 40% glycerol

**研究领域:** Epigenetics and Nuclear Signaling, Cancer

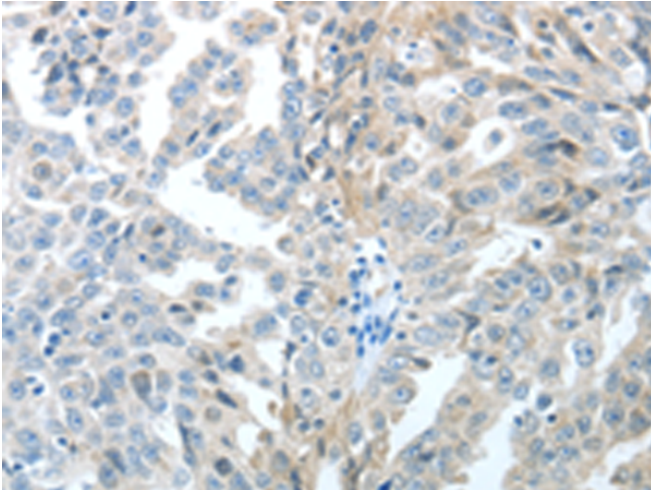
**储存和运输:** Store at  $-20^{\circ}\text{C}$ . Avoid repeated freezing and thawing



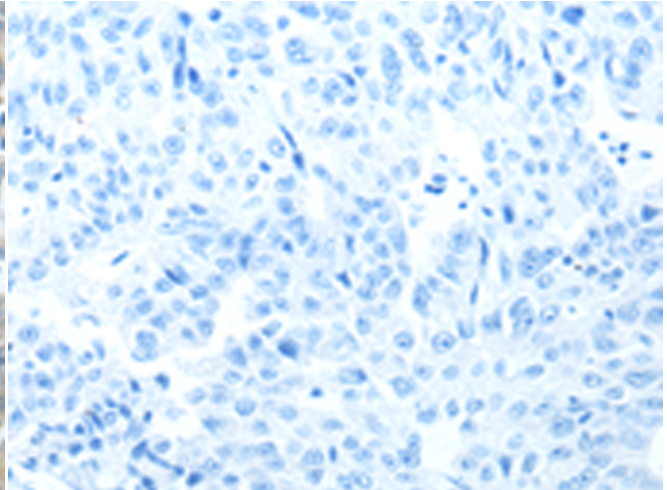
Immunohistochemistry analysis of paraffin embedded Human thyroid cancer tissue using 210508 (TP63 Antibody) at a dilution of 1/20 (Cytoplasm).



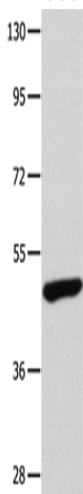
In comparison with the IHC on the left, the same paraffin-embedded Human thyroid cancer tissue is first treated with the fusion protein and then with 210508 (Anti-TP63 Antibody) at dilution 1/20.



The image on the left is immunohistochemistry of paraffin-embedded Human ovarian cancer tissue using 210508 (Anti-TP63 Antibody) at a dilution of 1/20.



In comparison with the IHC on the left, the same paraffin-embedded Human ovarian cancer tissue is first treated with fusion protein and then with D121090 (Anti-TP63 Antibody) at dilution 1/20.



Gel: 10% SDS-PAGE, Lysate: 40 µg;  
Lane: Mouse bladder tissue;  
Primary antibody: 210508 (TP63 Antibody) at dilution 1/400;  
Secondary antibody: Goat anti rabbit IgG at 1/8000 dilution;  
Exposure time: 2 minutes



# Product Description

Pioneering GTPase and Oncogene Product Development since 2010

---