

## TP53BP2 RABBIT PAB

货号: S219664

产品全名: TP53BP2 兔多抗

基因符号: BBP, 53BP2, ASPP2, P53BP2, PPP1R13A

**UNIPROT ID:** Q13625 (Gene Accession - NP\_001026855)

**背景:** This gene encodes a member of the ASPP (apoptosis-stimulating protein of p53) family of p53 interacting proteins. The protein contains four ankyrin repeats and an SH3 domain involved in protein-protein interactions. It is localized to the perinuclear region of the cytoplasm, and regulates apoptosis and cell growth through interactions with other regulatory molecules including members of the p53 family. Multiple transcript variants encoding different isoforms have been found for this gene.

**抗原:** Synthetic peptide of human TP53BP2

**经过测试的应用:** ELISA, IHC

**推荐稀释比:** IHC: 20-May; ELISA: 1000-2000

**种属反应性:** Rabbit

**克隆性:** Rabbit Polyclonal

**亚型:** Immunogen-specific rabbit IgG

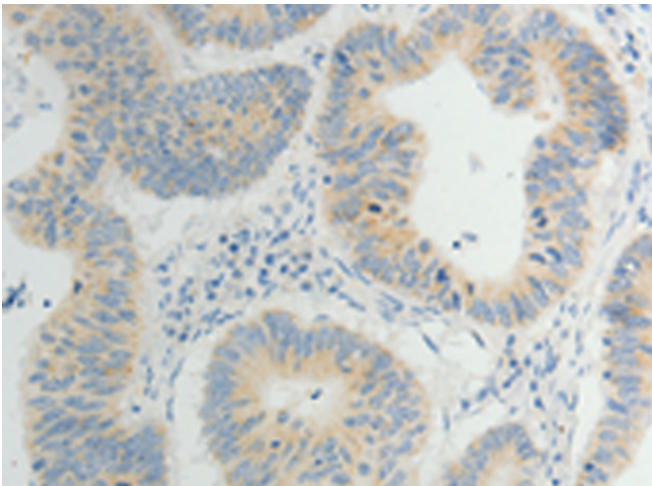
**纯化:** Antigen affinity purification

**种属反应性:** Human, Mouse

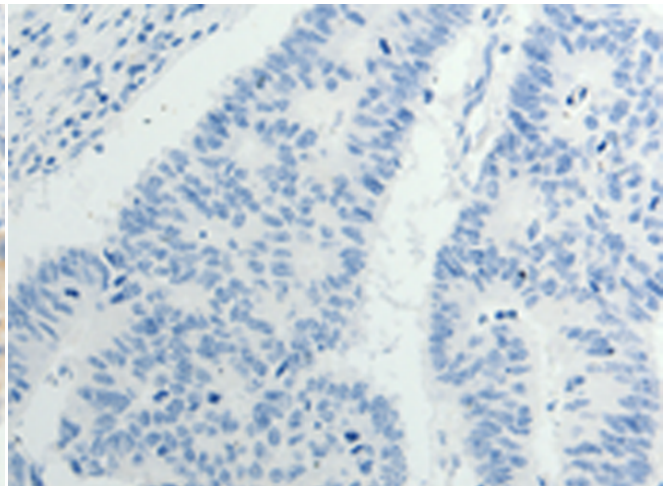
**成分:** PBS (without Mg<sup>2+</sup> and Ca<sup>2+</sup>), pH 7.4, 150 mM NaCl, 0.05% Sodium Azide and 40% glycerol

**研究领域:** Cancer

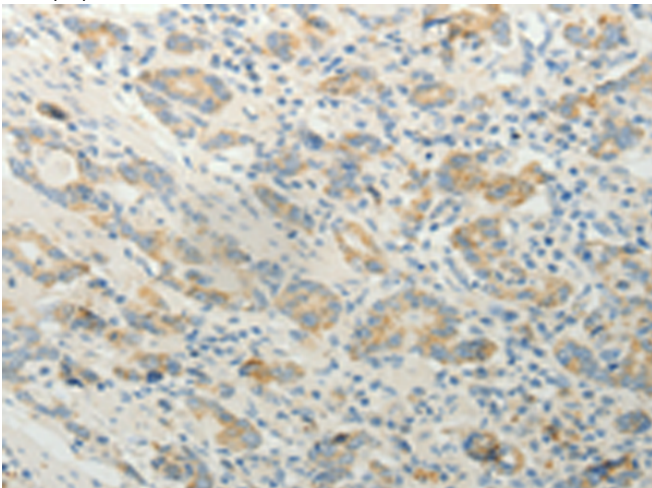
**储存和运输:** Store at -20°C. Avoid repeated freezing and thawing



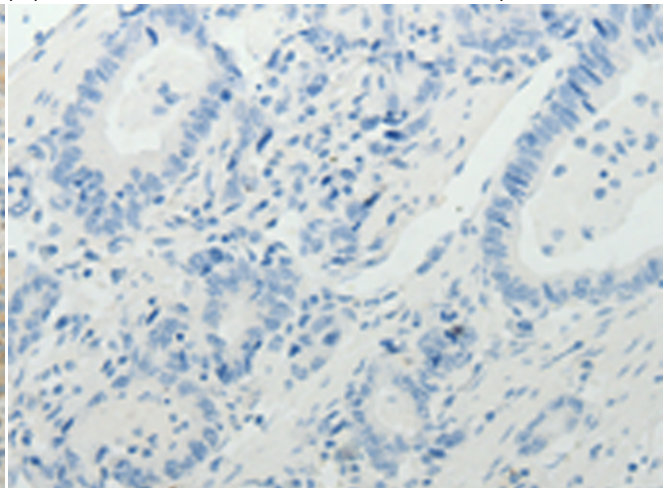
Immunohistochemistry analysis of paraffin embedded Human gastric cancer tissue using 219664(TP53BP2 Antibody) at a dilution of 1/5(Cytoplasm).



In comparison with the IHC on the left, the same paraffin-embedded Human gastric cancer tissue is first treated with the synthetic peptide and then with 219664(Anti-TP53BP2 Antibody) at dilution 1/5.



The image on the left is immunohistochemistry of paraffin-embedded Human colon cancer tissue using 219664(Anti-TP53BP2 Antibody) at a dilution of 1/5.



In comparison with the IHC on the left, the same paraffin-embedded Human colon cancer tissue is first treated with synthetic peptide and then with D260110(Anti-TP53BP2 Antibody) at dilution 1/5.



# Product Description

Pioneering GTPase and Oncogene Product Development since 2010

---