

TP53AIP1 RABBIT PAB

货号: S220776

产品全名: TP53AIP1 兔多抗

基因符号: P53AIP1

UNIPROT ID: Q9HCN2 (Gene Accession - NP_071395)

背景: This gene is specifically expressed in the thymus, and encodes a protein that is localized to the mitochondrion. The expression of this gene is inducible by p53, and it is thought to play an important role in mediating p53-dependent apoptosis. Alternatively spliced transcript variants encoding different isoforms have been described for this gene.

抗原: Synthetic peptide of human TP53AIP1

经过测试的应用: ELISA, IHC

推荐稀释比: IHC: 50-200; ELISA: 2000-5000

种属反应性: Rabbit

克隆性: Rabbit Polyclonal

亚型: Immunogen-specific rabbit IgG

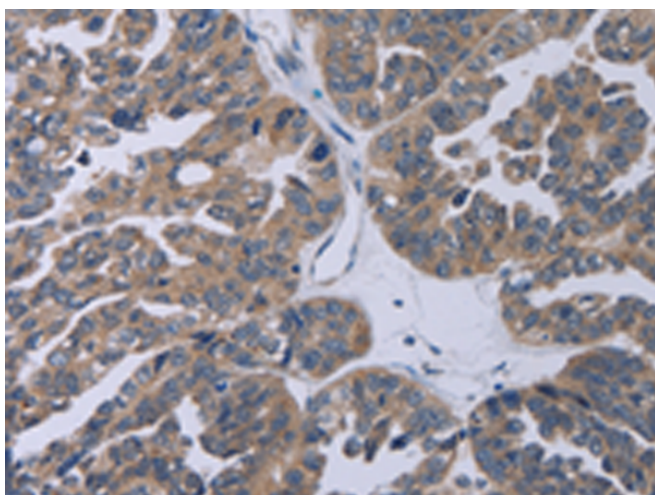
纯化: Antigen affinity purification

种属反应性: Human

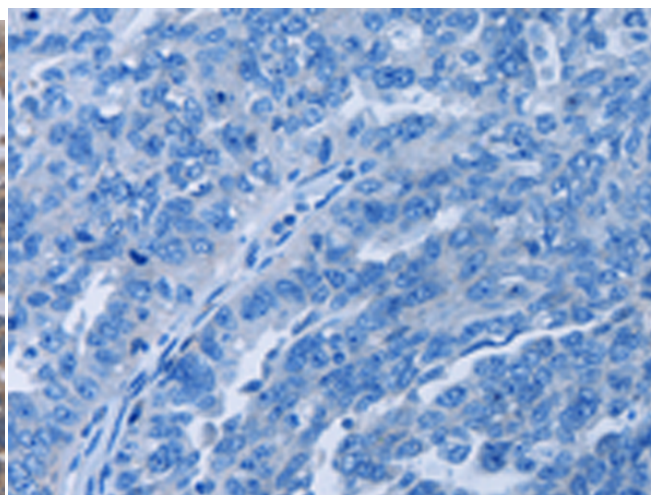
成分: PBS (without Mg²⁺ and Ca²⁺), pH 7.4, 150 mM NaCl, 0.05% Sodium Azide and 40% glycerol

研究领域: Cancer

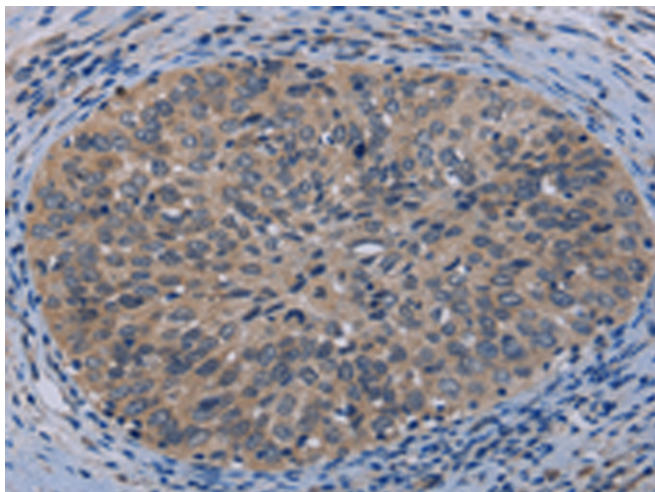
储存和运输: Store at -20°C. Avoid repeated freezing and thawing



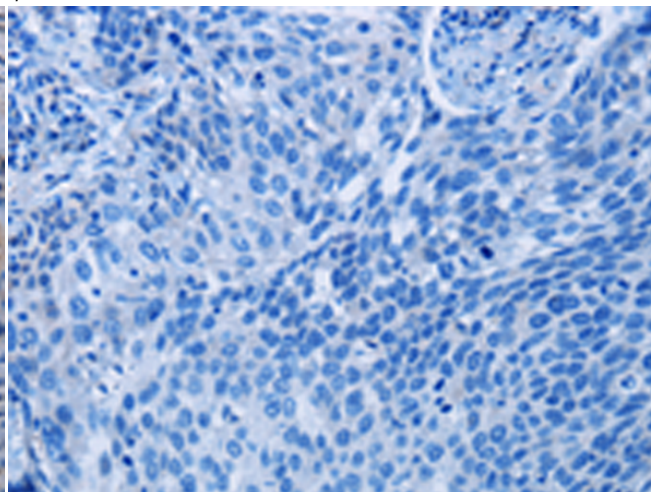
Immunohistochemistry analysis of paraffin embedded Human ovarian cancer tissue using 220776 (TP53AIP1 Antibody) at a dilution of 1/50 (Cytoplasm).



In comparison with the IHC on the left, the same paraffin-embedded Human ovarian cancer tissue is first treated with the synthetic peptide and then with 220776 (Anti-TP53AIP1 Antibody) at dilution 1/50.



The image on the left is immunohistochemistry of paraffin-embedded Human cervical cancer tissue using 220776 (Anti-TP53AIP1 Antibody) at a dilution of 1/50.



In comparison with the IHC on the left, the same paraffin-embedded Human cervical cancer tissue is first treated with synthetic peptide and then with D262005 (Anti-TP53AIP1 Antibody) at dilution 1/50.



Product Description

Pioneering GTPase and Oncogene Product Development since 2010
