

TOR1AIP1 RABBIT PAB

货号: S219134

产品全名: TOR1AIP1 兔多抗

基因符号 LAP1; LAP1B; LGMD2Y

UNIPROT ID: Q5JTV8 (Gene Accession - BC023247)

背景: This gene encodes a type 2 integral membrane protein that binds A- and B-type lamins. The encoded protein localizes to the inner nuclear membrane and may be involved in maintaining the attachment of the nuclear membrane to the nuclear lamina during cell division. Alternate splicing results in multiple transcript variants.

抗原: Fusion protein of human TOR1AIP1

经过测试的应用: ELISA, IHC

推荐稀释比: IHC: 50-300; ELISA: 5000-10000

种属反应性: Rabbit

克隆性: Rabbit Polyclonal

亚型: Immunogen-specific rabbit IgG

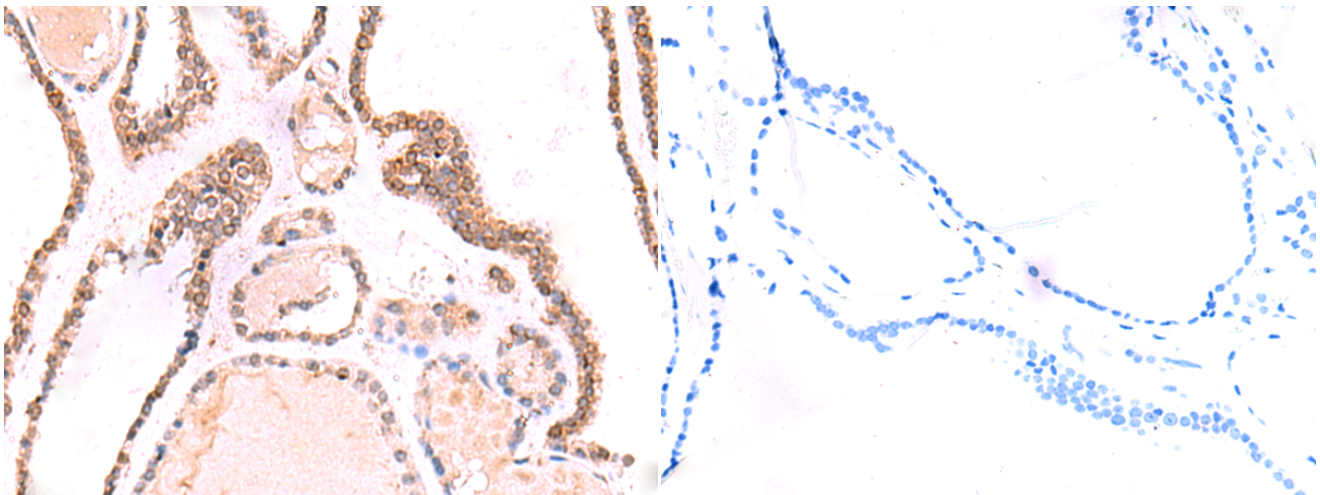
纯化: Antigen affinity purification

种属反应性: Human, Mouse, Rat

成分: PBS (without Mg²⁺ and Ca²⁺), pH 7.4, 150 mM NaCl, 0.05% Sodium Azide and 40% glycerol

研究领域: Signal Transduction

储存和运输: Store at -20°C. Avoid repeated freezing and thawing



Immunohistochemistry analysis of paraffin embedded Human thyroid cancer tissue using 219134(TOR1AIP1 Antibody) at a dilution of 1/70(Nucleus and Cytoplasm).

In comparison with the IHC on the left, the same paraffin-embedded Human thyroid cancer tissue is first treated with the fusion protein and then with 219134(Anti-TOR1AIP1 Antibody) at dilution 1/70.