

TOP1MT RABBIT PAB

货号: S220009

产品全名: TOP1MT 兔多抗

基因符号

UNIPROT ID: Q969P6 (Gene Accession - NP_001245375)

背景: This gene encodes a mitochondrial DNA topoisomerase that plays a role in the modification of DNA topology. The encoded protein is a type IB topoisomerase and catalyzes the transient breaking and rejoining of DNA to relieve tension and DNA supercoiling generated in the mitochondrial genome during replication and transcription. Alternatively spliced transcript variants encoding multiple isoforms have been observed for this gene.

抗原: Synthetic peptide of human TOP1MT

经过测试的应用: ELISA, IHC

推荐稀释比: IHC: 20-May; ELISA: 1000-2000

种属反应性: Rabbit

克隆性: Rabbit Polyclonal

亚型: Immunogen-specific rabbit IgG

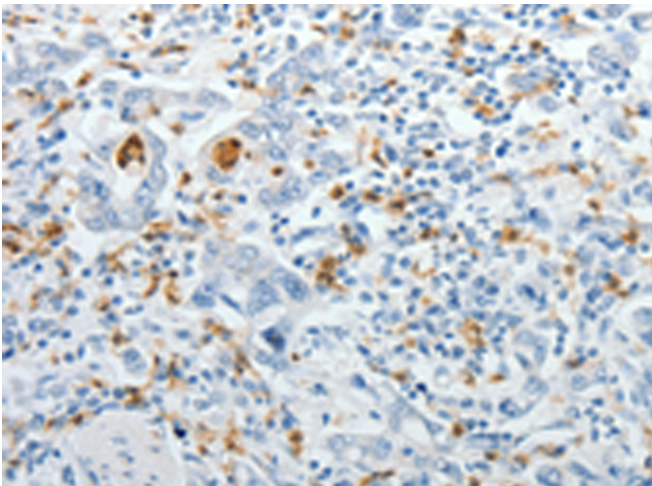
纯化: Antigen affinity purification

种属反应性: Human

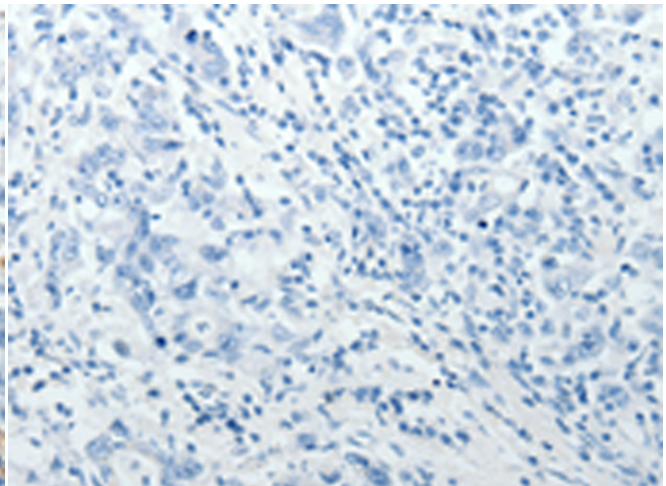
成分: PBS (without Mg²⁺ and Ca²⁺), pH 7.4, 150 mM NaCl, 0.05% Sodium Azide and 40% glycerol

研究领域: Epigenetics and Nuclear Signaling

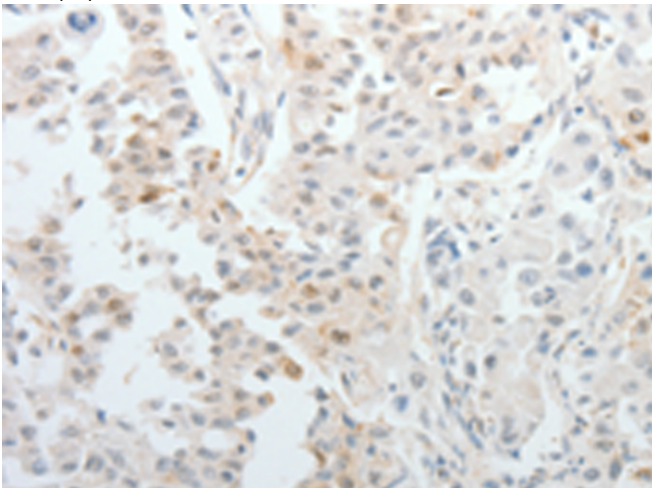
储存和运输: Store at -20°C. Avoid repeated freezing and thawing



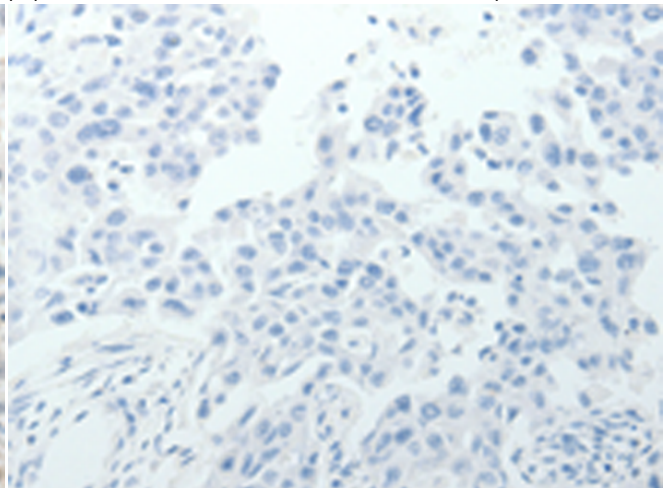
Immunohistochemistry analysis of paraffin embedded Human gastric cancer tissue using 220009(TOP1MT Antibody) at a dilution of 1/10(Cytoplasm, Nucleus).



In comparison with the IHC on the left, the same paraffin-embedded Human gastric cancer tissue is first treated with the synthetic peptide and then with 220009(Anti-TOP1MT Antibody) at dilution 1/10.



The image on the left is immunohistochemistry of paraffin-embedded Human lung cancer tissue using 220009(Anti-TOP1MT Antibody) at a dilution of 1/10.



In comparison with the IHC on the left, the same paraffin-embedded Human lung cancer tissue is first treated with synthetic peptide and then with D260774(Anti-TOP1MT Antibody) at dilution 1/10.



Product Description

Pioneering GTPase and Oncogene Product Development since 2010
