

TOP1 RABBIT PAB

货号: S222309

产品全名: TOP1 兔多抗

基因符号 TOP1

UNIPROT ID: P11387 (Gene Accession - NP_003277)

背景: This gene encodes a DNA topoisomerase, an enzyme that controls and alters the topologic states of DNA during transcription. This enzyme catalyzes the transient breaking and rejoining of a single strand of DNA which allows the strands to pass through one another, thus altering the topology of DNA. This gene is localized to chromosome 20 and has pseudogenes which reside on chromosomes 1 and 22.

抗原: Synthetic peptide of human TOP1

经过测试的应用: ELISA, WB, IHC

推荐稀释比: IHC: 50-100;WB: 500-2000;ELISA: 5000-10000

种属反应性: Rabbit

克隆性: Rabbit Polyclonal

亚型: Immunogen-specific rabbit IgG

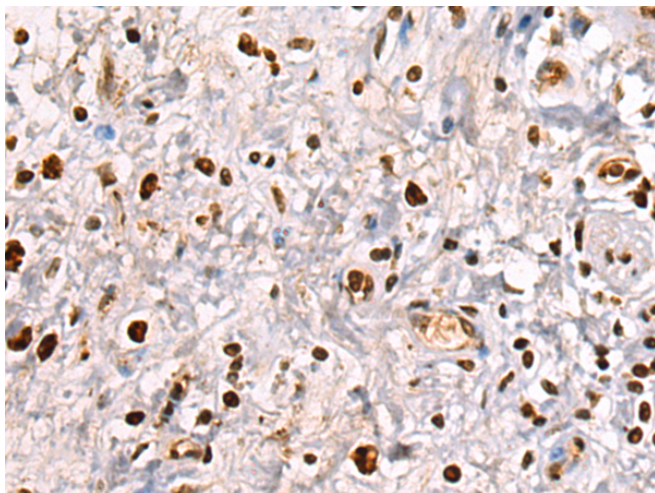
纯化: Antigen affinity purification

种属反应性: Human, Mouse, Rat

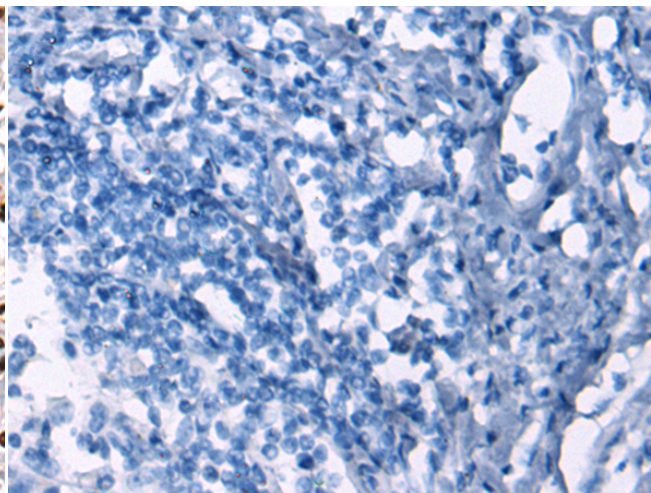
成分: PBS (without Mg²⁺ and Ca²⁺), pH 7.4, 150 mM NaCl, 0.05% Sodium Azide and 40% glycerol

研究领域: Epigenetics and Nuclear Signaling, Cancer

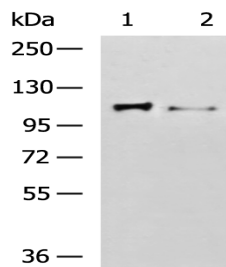
储存和运输: Store at -20°C. Avoid repeated freezing and thawing



Immunohistochemistry analysis of paraffin embedded Human gastric cancer tissue using 222309 (TOP1 Antibody) at a dilution of 1/35 (Nucleus).



In comparison with the IHC on the left, the same paraffin-embedded Human gastric cancer tissue is first treated with the synthetic peptide and then with 222309 (Anti-TOP1 Antibody) at dilution 1/35.



Gel: 6%SDS-PAGE, Lysate: 40 µg;

Lane 1-2: 231 and K562 cell lysates;

Primary antibody: 222309 (TOP1 Antibody) at dilution 1/900;

Secondary antibody: HRP-conjugated Goat anti rabbit IgG at 1/5000 dilution;

Exposure time: 2 minutes