

TOLL-LIKE RECEPTOR 2 RABBIT MAB

货号: N261765

产品全名: Toll-Like Receptor 2 兔单克隆抗体

基因符号 Toll-Like Receptor 2; TLR2; CD282; TIL4; Toll-like receptor 2;
Toll/interleukin-1 receptor-like protein 4

UNIPROT ID: Q9QUN7

背景: Cooperates with LY96 to mediate the innate immune response to bacterial lipoproteins and other microbial cell wall components. Cooperates with TLR1 or TLR6 to mediate the innate immune response to bacterial lipoproteins or lipopeptides. Acts via MYD88 and TRAF6, leading to NF-kappa-B activation, cytokine secretion and the inflammatory response.

抗原: Recombinant protein of mouse TLR2

经过测试的应用: WB,IHC-F,IHC-P,ICC/IF

推荐稀释比: WB: 1/500-1/1000 IHC: 1/50-1/100 IF: 1/50-1/200

种属反应性: Rabbit

克隆性: Rabbit Monoclonal

克隆编号: R06-8B6

分子量: Calculated MW: 89 kDa; Observed MW: 89 kDa

亚型: IgG

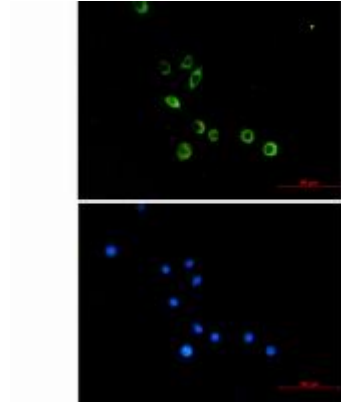
纯化: Affinity Purified

种属反应性: Mouse

成分: PBS (without Mg²⁺ and Ca²⁺), pH 7.3 containing 50% glycerol, 0.5% BSA and 0.02% sodium azide

研究领域: Immunology

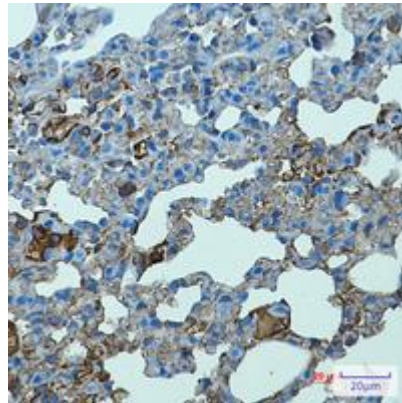
储存和运输: Store at -20°C. Avoid repeated freezing and thawing



Immunocytochemistry analysis of TLR2 (green) in Raw264.7 using TLR2 antibody, and DAPI (blue)



Western blot analysis of TLR2 in Raw264.7 lysates using TLR2 antibody.



Immunohistochemistry analysis of paraffin-embedded mouse lung using Toll Like Receptor 2 antibody. High-pressure and temperature Sodium Citrate pH 6.0 was used for antigen retrieval.