

TOE1 RABBIT PAB

货号: S219492

产品全名: TOE1 兔多抗

基因符号 PCH7; hCaf1z

UNIPROT ID: Q96GM8 (Gene Accession - BC009364)

背景: Inhibits cell growth rate and cell cycle. Induces CDKN1A expression as well as TGF-beta expression. Mediates the inhibitory growth effect of EGR1. Involved in the maturation of snRNAs and snRNA 3'-tail processing (PubMed:28092684).

抗原: Fusion protein of human TOE1

经过测试的应用: ELISA, WB, IHC

推荐稀释比: IHC: 100-200;WB: 500-2000;ELISA: 5000-10000

种属反应性: Rabbit

克隆性: Rabbit Polyclonal

亚型: Immunogen-specific rabbit IgG

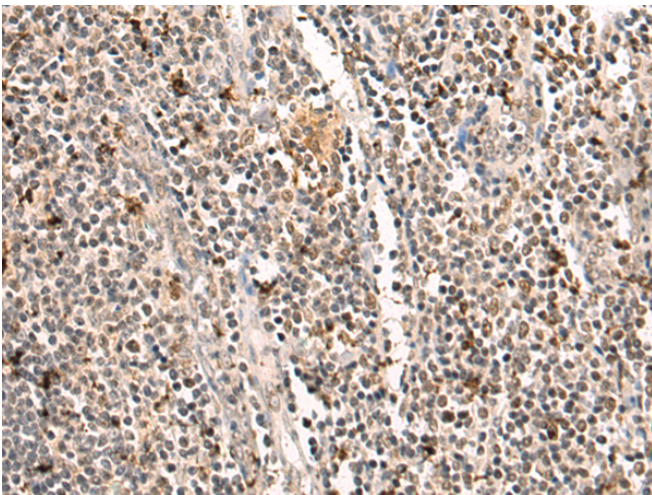
纯化: Antigen affinity purification

种属反应性: Human

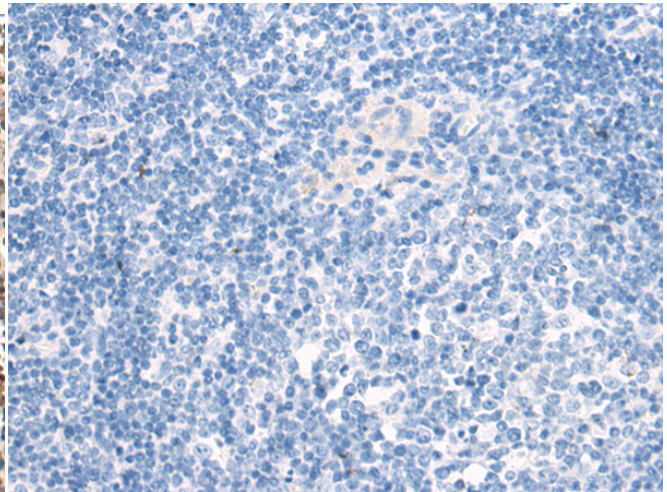
成分: PBS (without Mg²⁺ and Ca²⁺), pH 7.4, 150 mM NaCl, 0.05% Sodium Azide and 40% glycerol

研究领域: Cell Biology

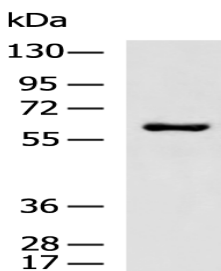
储存和运输: Store at -20°C. Avoid repeated freezing and thawing



Immunohistochemistry analysis of paraffin embedded Human tonsil tissue using 219492 (TOE1 Antibody) at a dilution of 1/110 (Nucleus).



In comparison with the IHC on the left, the same paraffin-embedded Human tonsil tissue is first treated with the fusion protein and then with 219492 (Anti-TOE1 Antibody) at dilution 1/110.



Gel: 8%SDS-PAGE, Lysate: 40 µg;

Lane: K562 cell lysate;

Primary antibody: 219492 (TOE1 Antibody) at dilution 1/800;

Secondary antibody: HRP-conjugated Goat anti rabbit IgG at 1/5000 dilution;

Exposure time: 30 seconds