

## TNN RABBIT PAB

货号: S220222

产品全名: TNN 兔多抗

基因符号 TN-W

**UNIPROT ID:** Q9UQP3 (Gene Accession - NP\_071376 )

**背景:** This protein is involved in neurite outgrowth and cell migration in hippocampal explants. It has three EGF-like domains, one fibrinogen C-terminal domain and nine fibronectin type III domains. Tenascins are extracellular matrix proteins present during the development of organisms as well as in pathological conditions. Tenascin-W, the fourth and last member of the tenascin family remains the least well-characterized one.

**抗原:** Synthetic peptide of human TNN

**经过测试的应用:** ELISA, IHC

**推荐稀释比:** IHC: 50-200; ELISA: 3000-10000

**种属反应性:** Rabbit

**克隆性:** Rabbit Polyclonal

**亚型:** Immunogen-specific rabbit IgG

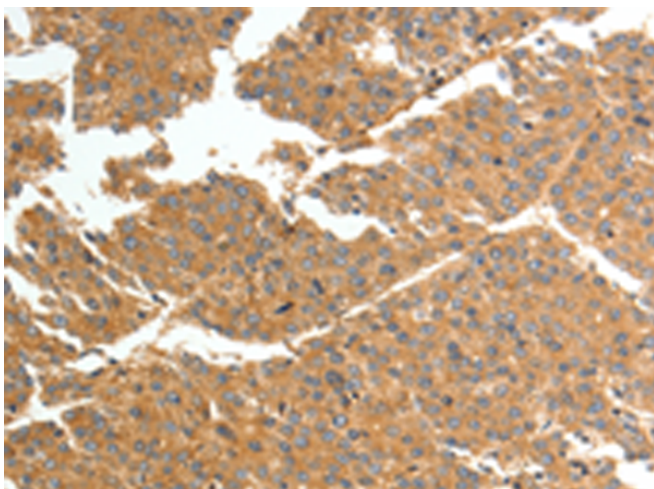
**纯化:** Antigen affinity purification

**种属反应性:** Human, Mouse

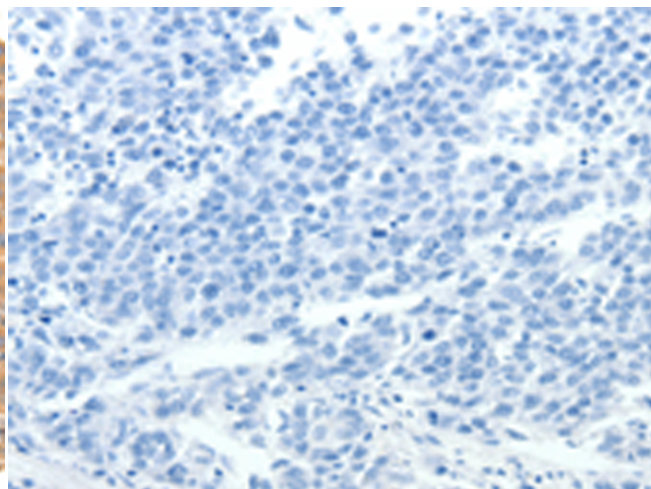
**成分:** PBS (without Mg<sup>2+</sup> and Ca<sup>2+</sup>), pH 7.4, 150 mM NaCl, 0.05% Sodium Azide and 40% glycerol

**研究领域:** Signal Transduction

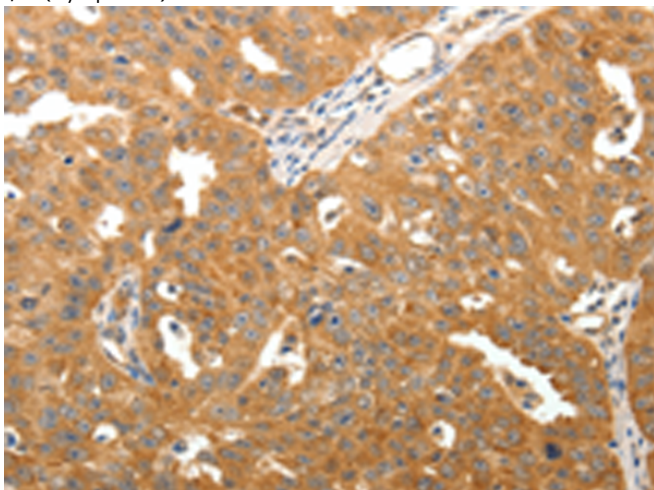
**储存和运输:** Store at -20°C. Avoid repeated freezing and thawing



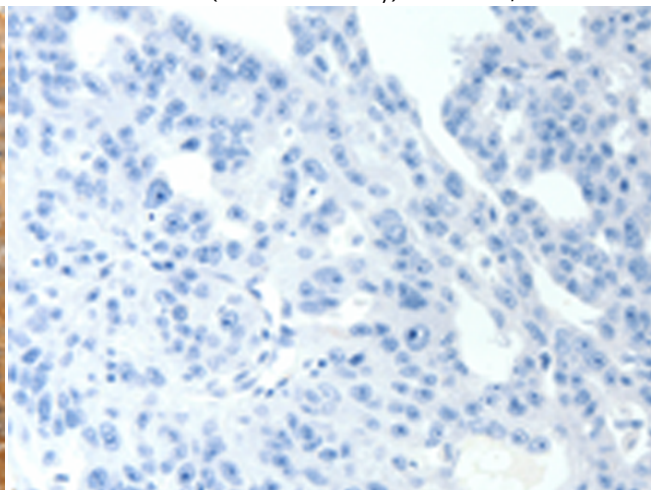
Immunohistochemistry analysis of paraffin embedded Human liver cancer tissue using 220222(TNN Antibody) at a dilution of 1/50(Cytoplasm).



In comparison with the IHC on the left, the same paraffin-embedded Human liver cancer tissue is first treated with the synthetic peptide and then with 220222(Anti-TNN Antibody) at dilution 1/50.



The image on the left is immunohistochemistry of paraffin-embedded Human ovarian cancer tissue using 220222(Anti-TNN Antibody) at a dilution of 1/50.



In comparison with the IHC on the left, the same paraffin-embedded Human ovarian cancer tissue is first treated with synthetic peptide and then with D261163(Anti-TNN Antibody) at dilution 1/50.



# Product Description

Pioneering GTPase and Oncogene Product Development since 2010

---