

TNC RABBIT PAB

货号: S221389

产品全名: TNC 兔多抗

基因符号: GP; JI; TN; HXB; GMEM; TN-C; DFNA56; 150-225

UNIPROT ID: P24821 (Gene Accession - NP_002151)

背景: This gene encodes an extracellular matrix protein with a spatially and temporally restricted tissue distribution. This protein is homohexameric with disulfide-linked subunits, and contains multiple EGF-like and fibronectin type-III domains. It is implicated in guidance of migrating neurons as well as axons during development, synaptic plasticity, and neuronal regeneration. [provided by RefSeq, Jul 2011]

抗原: Synthetic peptide of human TNC

经过测试的应用: ELISA, IHC

推荐稀释比: IHC: 50-100; ELISA: 5000-10000

种属反应性: Rabbit

克隆性: Rabbit Polyclonal

亚型: Immunogen-specific rabbit IgG

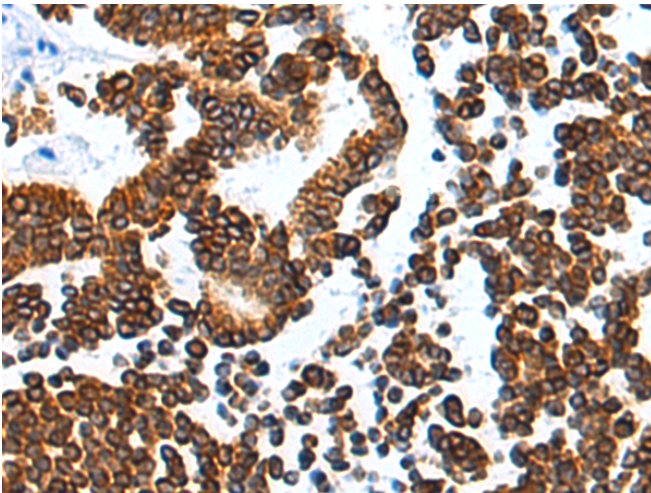
纯化: Antigen affinity purification

种属反应性: Human, Mouse

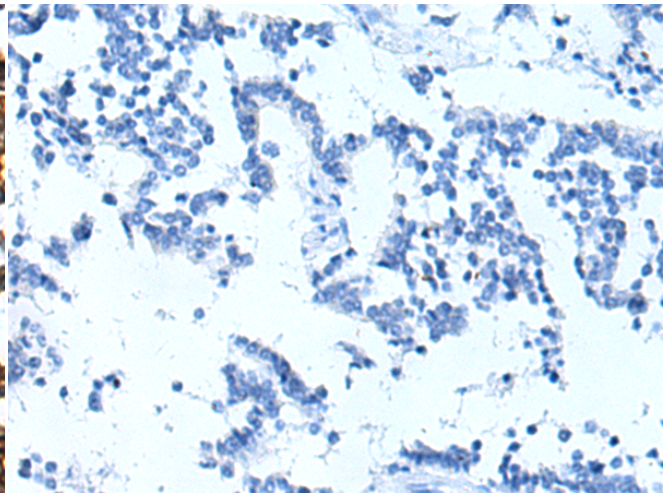
成分: PBS (without Mg²⁺ and Ca²⁺), pH 7.4, 150 mM NaCl, 0.05% Sodium Azide and 40% glycerol

研究领域: Neuroscience, Stem Cells

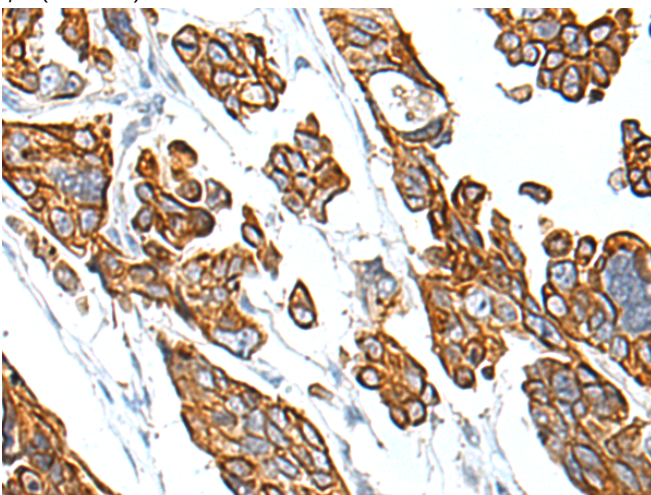
储存和运输: Store at -20°C. Avoid repeated freezing and thawing



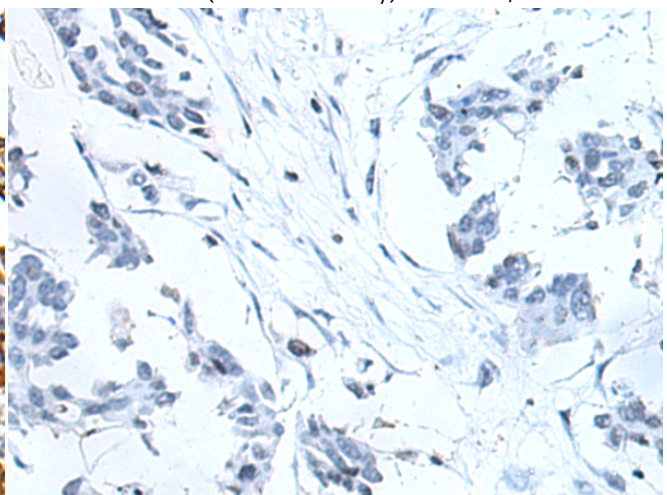
Immunohistochemistry analysis of paraffin embedded Human liver cancer tissue using 221389(TNC Antibody) at a dilution of 1/30(Secreted).



In comparison with the IHC on the left, the same paraffin-embedded Human liver cancer tissue is first treated with the synthetic peptide and then with 221389(Anti-TNC Antibody) at dilution 1/30.



The image on the left is immunohistochemistry of paraffin-embedded Human colorectal cancer tissue using 221389(Anti-TNC Antibody) at a dilution of 1/30.



In comparison with the IHC on the left, the same paraffin-embedded Human colorectal cancer tissue is first treated with synthetic peptide and then with D262956(Anti-TNC Antibody) at dilution 1/30.



Product Description

Pioneering GTPase and Oncogene Product Development since 2010
