

TMPRSS7 RABBIT PAB

货号: S216636

产品全名: TMPRSS7 兔多抗

基因符号

UNIPROT ID: Q7RTY8 (Gene Accession - BC117322)

背景: Predicted to enable serine-type peptidase activity. Predicted to be involved in proteolysis. Predicted to be integral component of membrane. Predicted to be active in plasma membrane.

抗原: Fusion protein of human TMPRSS7

经过测试的应用: ELISA, IHC

推荐稀释比: IHC: 50-200; ELISA: 5000-10000

种属反应性: Rabbit

克隆性: Rabbit Polyclonal

亚型: Immunogen-specific rabbit IgG

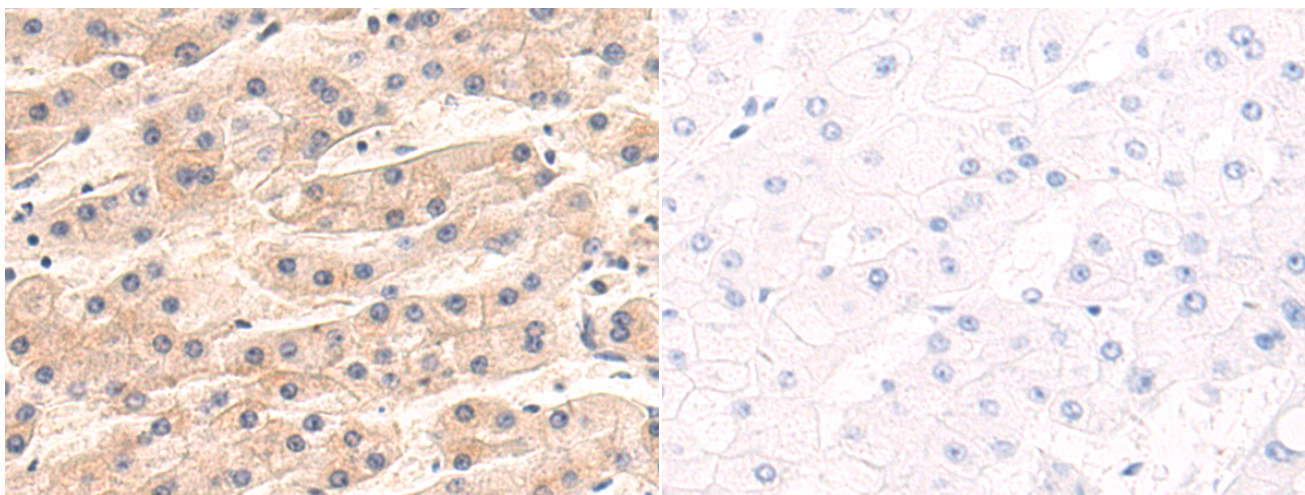
纯化: Antigen affinity purification

种属反应性: Human, Mouse, Rat

成分: PBS (without Mg²⁺ and Ca²⁺), pH 7.4, 150 mM NaCl, 0.05% Sodium Azide and 40% glycerol

研究领域: Signal Transduction, Cell Biology

储存和运输: Store at -20°C. Avoid repeated freezing and thawing



Immunohistochemistry analysis of paraffin embedded Human liver cancer tissue using 216636(TMPRSS7 Antibody) at a dilution of 1/55(Cytoplasm and Cell membrane).

In comparison with the IHC on the left, the same paraffin-embedded Human liver cancer tissue is first treated with the fusion protein and then with 216636(Anti-TMPRSS7 Antibody) at dilution 1/55.