

TMPRSS6 RABBIT PAB

货号: S221458

产品全名: TMPRSS6 兔多抗

基因符号 MT2; IRIDA

UNIPROT ID: Q8IU80 (Gene Accession - NP_001275930)

背景: The protein encoded by this gene is a type II transmembrane serine proteinase that is found attached to the cell surface. The encoded protein may be involved in matrix remodeling processes in the liver. Alternative splicing results in multiple transcript variants.

抗原: Synthetic peptide of human TMPRSS6

经过测试的应用: ELISA, IHC

推荐稀释比: IHC: 50-200; ELISA: 5000-10000

种属反应性: Rabbit

克隆性: Rabbit Polyclonal

亚型: Immunogen-specific rabbit IgG

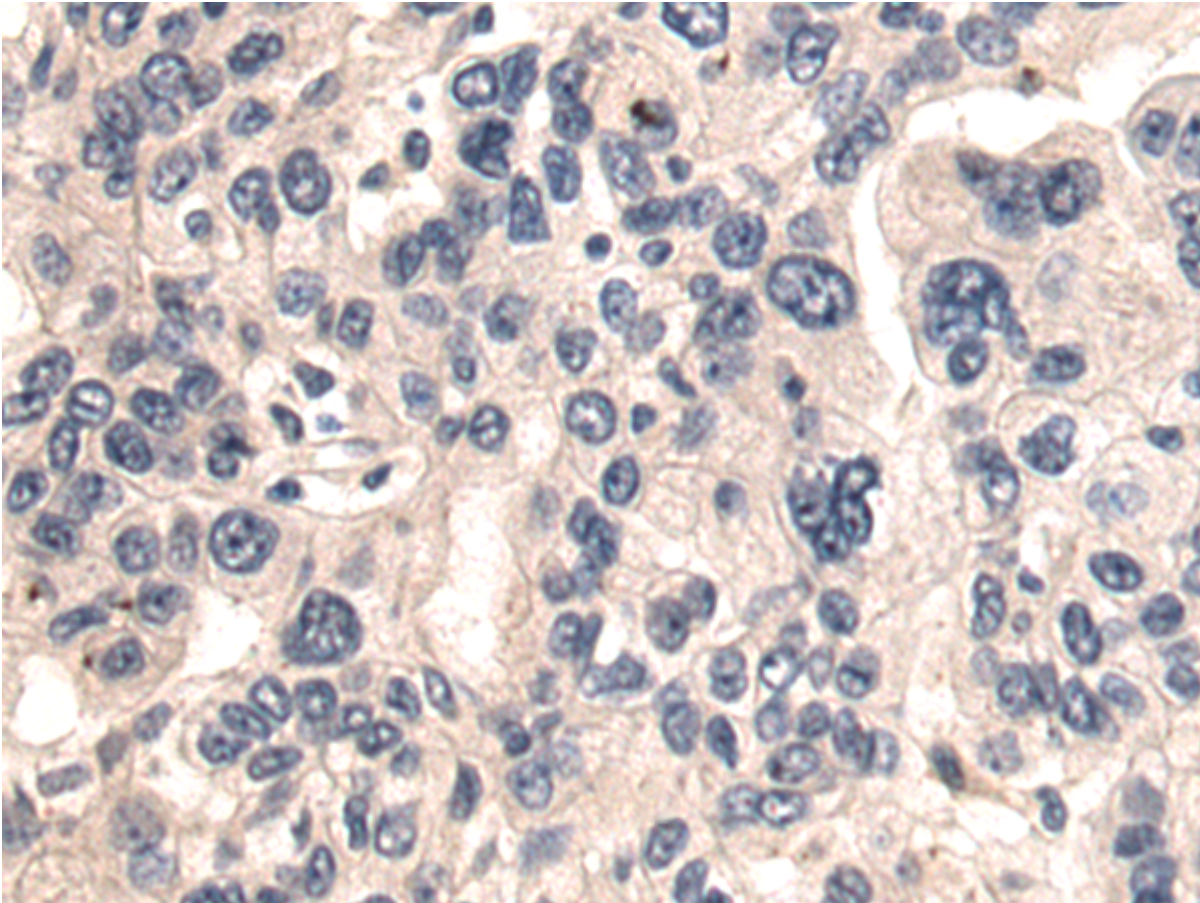
纯化: Antigen affinity purification

种属反应性: Human

成分: PBS (without Mg²⁺ and Ca²⁺), pH 7.4, 150 mM NaCl, 0.05% Sodium Azide and 40% glycerol

研究领域: Signal Transduction, Cell Biology

储存和运输: Store at -20°C. Avoid repeated freezing and thawing



Immunohistochemistry analysis of paraffin-embedded Human breast cancer tissue using 221458(TMPRSS6 Antibody) at a dilution of 1/50(Cytoplasm).