

TMPRSS5 RABBIT PAB

货号: S217921

产品全名: TMPRSS5 兔多抗

基因符号: SPINESIN

UNIPROT ID: Q9H3S3 (Gene Accession - BC121803)

背景: This gene encodes a protein that belongs to the serine protease family. Serine proteases are known to be involved in many physiological and pathological processes. Alternative splicing results in multiple transcript variants.

抗原: Fusion protein of human TMPRSS5

经过测试的应用: ELISA, WB, IHC

推荐稀释比: IHC: 200-400;WB: 1000-5000;ELISA: 5000-10000

种属反应性: Rabbit

克隆性: Rabbit Polyclonal

亚型: Immunogen-specific rabbit IgG

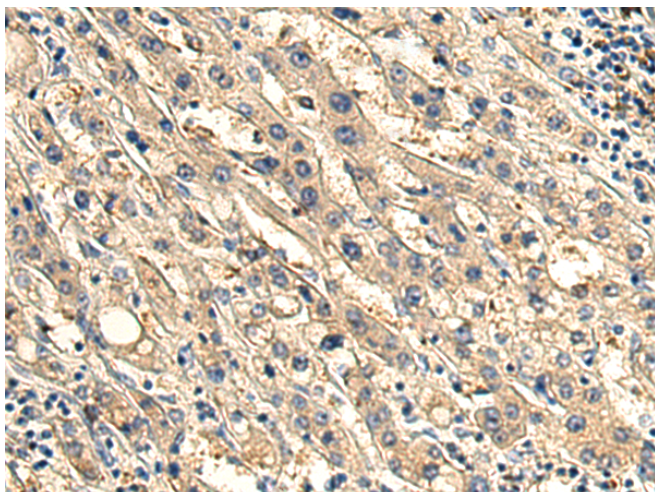
纯化: Antigen affinity purification

种属反应性: Human, Mouse

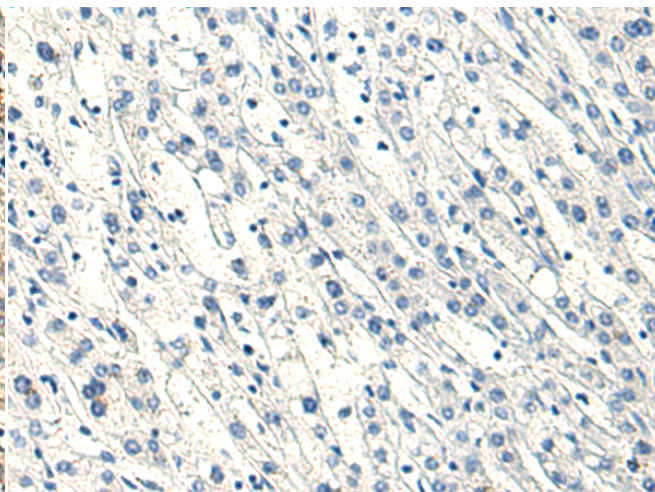
成分: PBS (without Mg²⁺ and Ca²⁺), pH 7.4, 150 mM NaCl, 0.05% Sodium Azide and 40% glycerol

研究领域: Cell Biology

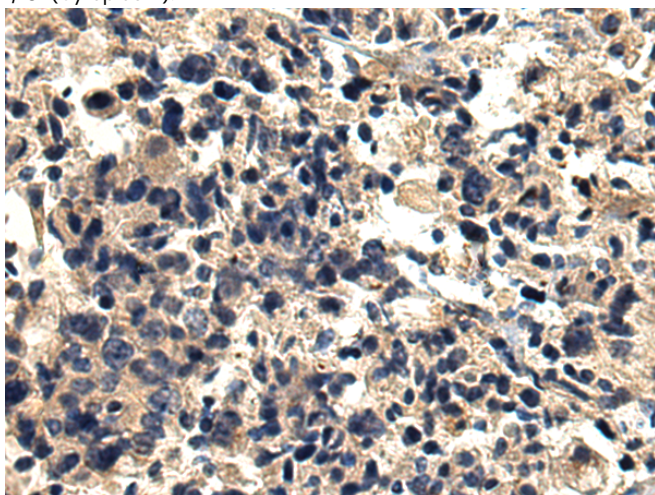
储存和运输: Store at -20°C. Avoid repeated freezing and thawing



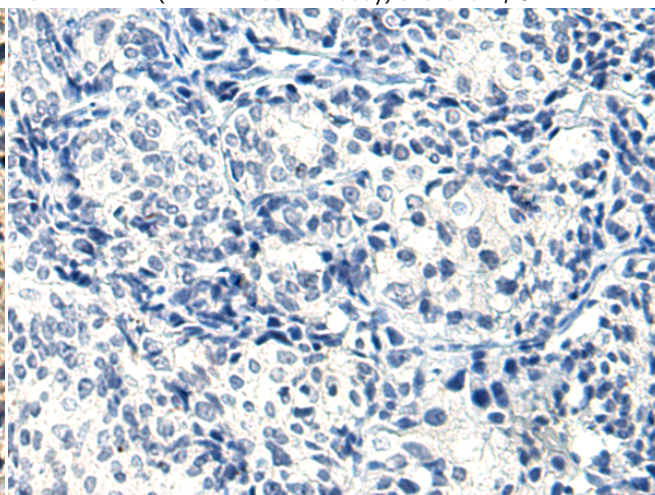
Immunohistochemistry analysis of paraffin embedded Human liver cancer tissue using 217921(TMPRSS5 Antibody) at a dilution of 1/180(Cytoplasm).



In comparison with the IHC on the left, the same paraffin-embedded Human liver cancer tissue is first treated with the fusion protein and then with 217921(Anti-TMPRSS5 Antibody) at dilution 1/180.



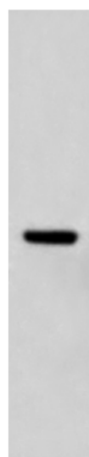
The image on the left is immunohistochemistry of paraffin-embedded Human prostate cancer tissue using 217921(Anti-TMPRSS5 Antibody) at a dilution of 1/180.



In comparison with the IHC on the left, the same paraffin-embedded Human prostate cancer tissue is first treated with fusion protein and then with D223376(Anti-TMPRSS5 Antibody) at dilution 1/180.

kDa

250—
130—
95—
72—
55—
36—
28—



Gel: 8%SDS-PAGE, Lysate: 40 µg;
Lane: Mouse liver tissue lysate;
Primary antibody: 217921(TMPRSS5 Antibody) at dilution 1/1000;
Secondary antibody: HRP-conjugated Goat anti rabbit IgG at 1/5000 dilution;
Exposure time: 3 minutes



Product Description

Pioneering GTPase and Oncogene Product Development since 2010
