

## TMPRSS11F RABBIT PAB

货号: S214805

产品全名: TMPRSS11F 兔多抗

基因符号

**UNIPROT ID:** Q6ZWK6 (Gene Accession - NP\_997290)

**背景:** TMPRSS11F is a type-II transmembrane protease, similar to hepsin (TMPRSS1). TMPRSS11F is a member of a larger family of membrane attached serine proteases, a poorly defined group that includes TMPRSS11A, B, C, D, E, F, Hepsin, Corin, Matriptase-1, 2 and 3. TMPRSS11F has a domain structure of an aminoterminal cytoplasmic domain, followed by a transmembrane domain, a SEA domain (Sea urchin sperm protein, Enterokinase, Agrin), a short spacer, then the trypsin-like serine protease domain. The SEA domain is thought to play a role in carbohydrate binding in the analogous protein sequences where it is found, but its role in TMPRSS11F is unclear. The cleavage of the Arg206-Ile207 bond is thought to liberate the catalytic domain.

**抗原:** Synthetic peptide of human TMPRSS11F

**经过测试的应用:** ELISA, WB, IHC

**推荐稀释比:** IHC: 25-100;WB: 500-2000;ELISA: 2000-5000

**种属反应性:** Rabbit

**克隆性:** Rabbit Polyclonal

**亚型:** Immunogen-specific rabbit IgG

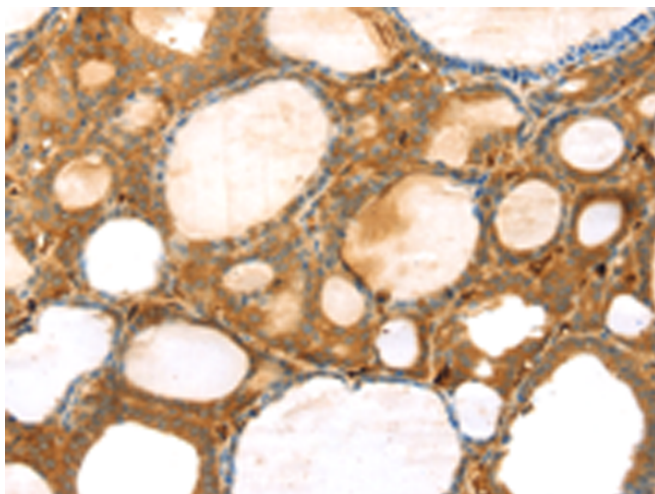
**纯化:** Antigen affinity purification

**种属反应性:** Human, Mouse

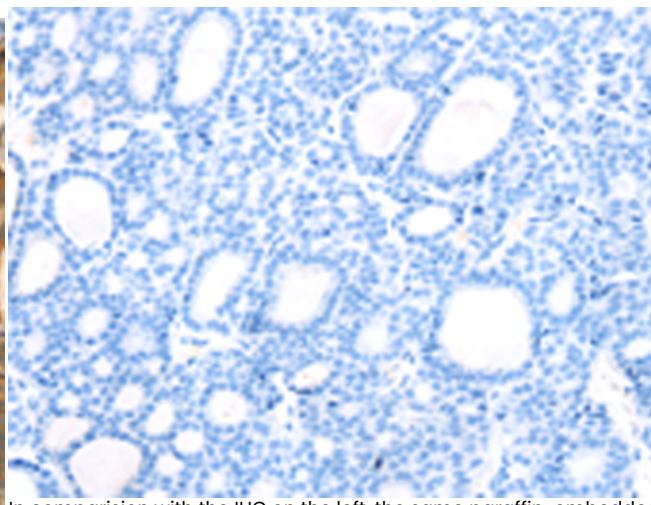
**成分:** PBS (without Mg<sup>2+</sup> and Ca<sup>2+</sup>), pH 7.4, 150 mM NaCl, 0.05% Sodium Azide and 40% glycerol

**研究领域:** Cell Biology

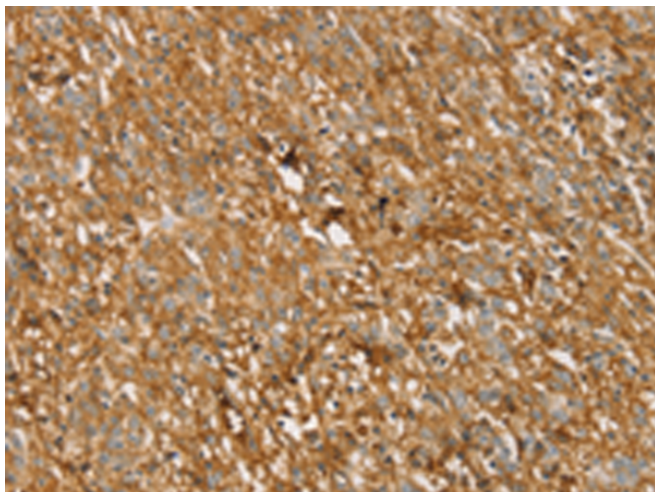
**储存和运输:** Store at -20°C. Avoid repeated freezing and thawing



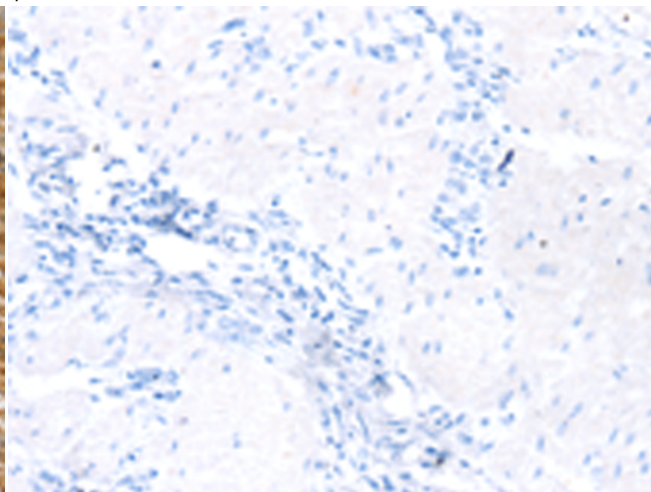
Immunohistochemistry analysis of paraffin embedded Human thyroid cancer tissue using 214805(TMPRS11F Antibody) at a dilution of 1/30(Cytoplasm).



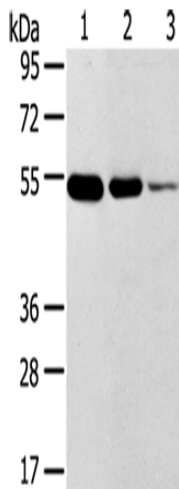
In comparison with the IHC on the left, the same paraffin-embedded Human thyroid cancer tissue is first treated with the synthetic peptide and then with 214805(Anti-TMPRS11F Antibody) at dilution 1/30.



The image on the left is immunohistochemistry of paraffin-embedded Human gastric cancer tissue using 214805(Anti-TMPRS11F Antibody) at a dilution of 1/30.



In comparison with the IHC on the left, the same paraffin-embedded Human gastric cancer tissue is first treated with synthetic peptide and then with D162381(Anti-TMPRS11F Antibody) at dilution 1/30.



Gel: 8%SDS-PAGE, Lysate: 40 µg;  
 Lane 1-3: Human thyroid tissue, Human esophagus cancer tissue, human normal rectum tissue;  
 Primary antibody: 214805(TMPRS11F Antibody) at dilution 1/500;  
 Secondary antibody: Goat anti rabbit IgG at 1/8000 dilution;  
 Exposure time: 1 minute



# Product Description

Pioneering GTPase and Oncogene Product Development since 2010

---