

TMPRSS11E RABBIT PAB

货号: S217923

产品全名: TMPRSS11E 兔多抗

基因符号: DESC1; TMPRSS11E2

UNIPROT ID: Q9UL52 (Gene Accession - BC113412)

背景: Serine protease which possesses both gelatinolytic and caseinolytic activities. Shows a preference for Arg in the P1 position (By similarity).

抗原: Fusion protein of human TMPRSS11E

经过测试的应用: ELISA, IHC

推荐稀释比: IHC: 30-150; ELISA: 2000-10000

种属反应性: Rabbit

克隆性: Rabbit Polyclonal

亚型: Immunogen-specific rabbit IgG

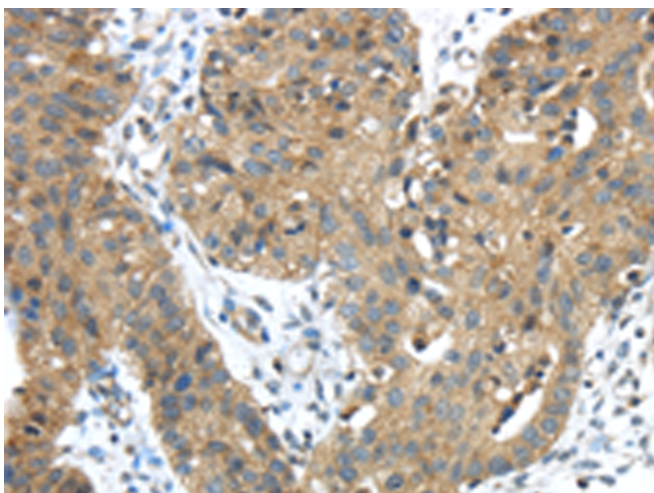
纯化: Antigen affinity purification

种属反应性: Human

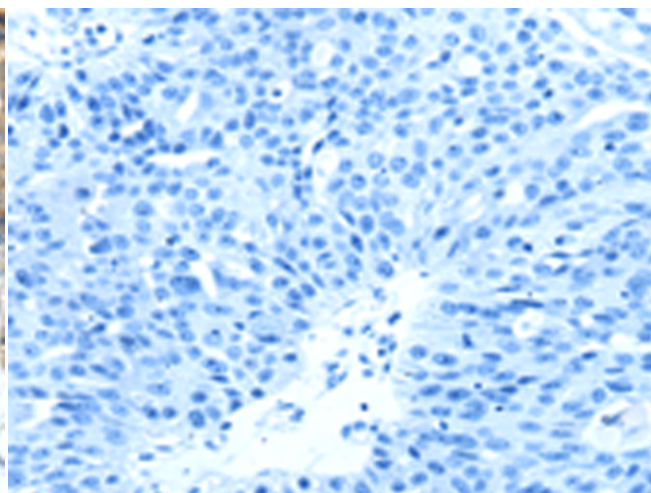
成分: PBS (without Mg²⁺ and Ca²⁺), pH 7.4, 150 mM NaCl, 0.05% Sodium Azide and 40% glycerol

研究领域: Cell Biology

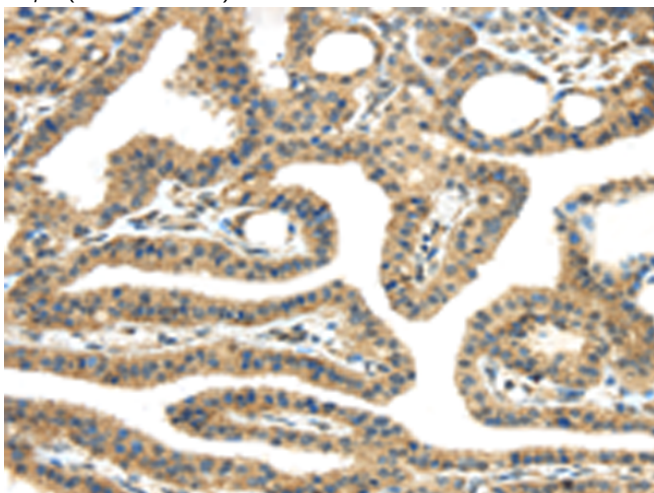
储存和运输: Store at -20°C. Avoid repeated freezing and thawing



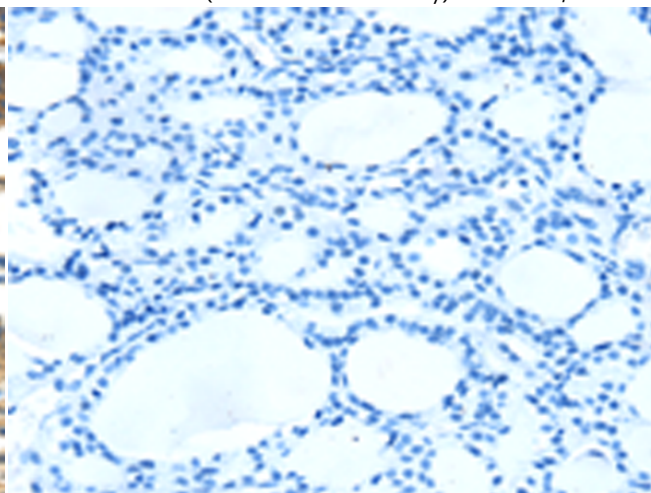
Immunohistochemistry analysis of paraffin embedded Human breast cancer tissue using 217923 (TMPRSS11E Antibody) at a dilution of 1/45 (Cell membrane).



In comparison with the IHC on the left, the same paraffin-embedded Human breast cancer tissue is first treated with the fusion protein and then with 217923 (Anti-TMPRSS11E Antibody) at dilution 1/45.



The image on the left is immunohistochemistry of paraffin-embedded Human thyroid cancer tissue using 217923 (Anti-TMPRSS11E Antibody) at a dilution of 1/45.



In comparison with the IHC on the left, the same paraffin-embedded Human thyroid cancer tissue is first treated with fusion protein and then with D223378 (Anti-TMPRSS11E Antibody) at dilution 1/45.



Product Description

Pioneering GTPase and Oncogene Product Development since 2010
