

## TMPRSS11D RABBIT PAB

货号: S217925

产品全名: TMPRSS11D 兔多抗

基因符号: HAT

**UNIPROT ID:** O60235 (Gene Accession - BC125195)

**背景:** This gene encodes a trypsin-like serine protease released from the submucosal serous glands onto mucous membrane. It is a type II integral membrane protein and has 29-38% identity in the sequence of the catalytic region with human hepsin, enteropeptidase, acrosin, and mast cell tryptase. The noncatalytic region has little similarity to other known proteins.

**抗原:** Fusion protein of human TMPRSS11D

**经过测试的应用:** ELISA, WB, IHC

**推荐稀释比:** IHC: 25-100;WB: 500-2000;ELISA: 2000-5000

**种属反应性:** Rabbit

**克隆性:** Rabbit Polyclonal

**亚型:** Immunogen-specific rabbit IgG

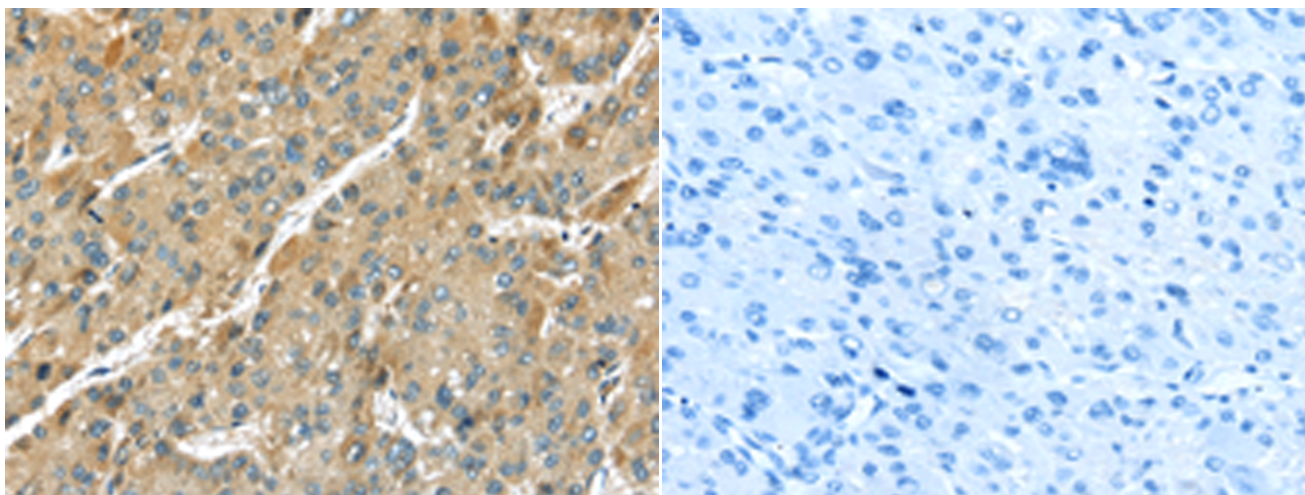
**纯化:** Antigen affinity purification

**种属反应性:** Human

**成分:** PBS (without Mg<sup>2+</sup> and Ca<sup>2+</sup>), pH 7.4, 150 mM NaCl, 0.05% Sodium Azide and 40% glycerol

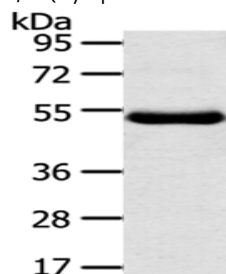
**研究领域:** Cell Biology

**储存和运输:** Store at -20°C. Avoid repeated freezing and thawing



Immunohistochemistry analysis of paraffin embedded Human liver cancer tissue using 217925(TMPRSS11D Antibody) at a dilution of 1/35(Cytoplasm and Cell membrane).

In comparison with the IHC on the left, the same paraffin-embedded Human liver cancer tissue is first treated with the fusion protein and then with 217925(Anti-TMPRSS11D Antibody) at dilution 1/35.



Gel: 8%SDS-PAGE, Lysate: 40 µg;

Lane: Human thigh malignant fibrous histiocytoma tissue;

Primary antibody: 217925(TMPRSS11D Antibody) at dilution 1/800;

Secondary antibody: Goat anti rabbit IgG at 1/8000 dilution;

Exposure time: 1 minute