

TMEM9B RABBIT PAB

货号: S219582

产品全名: TMEM9B 兔多抗

基因符号: C11orf15

UNIPROT ID: Q9NQ34 (Gene Accession - BC015884)

背景: Involved in positive regulation of I-kappaB kinase/NF-kappaB signaling. Predicted to be located in early endosome membrane and lysosomal membrane. Predicted to be integral component of membrane.

抗原: Fusion protein of human TMEM9B

经过测试的应用: ELISA, WB, IHC

推荐稀释比: IHC: 100-300;WB: 1000-5000;ELISA: 5000-10000

种属反应性: Rabbit

克隆性: Rabbit Polyclonal

亚型: Immunogen-specific rabbit IgG

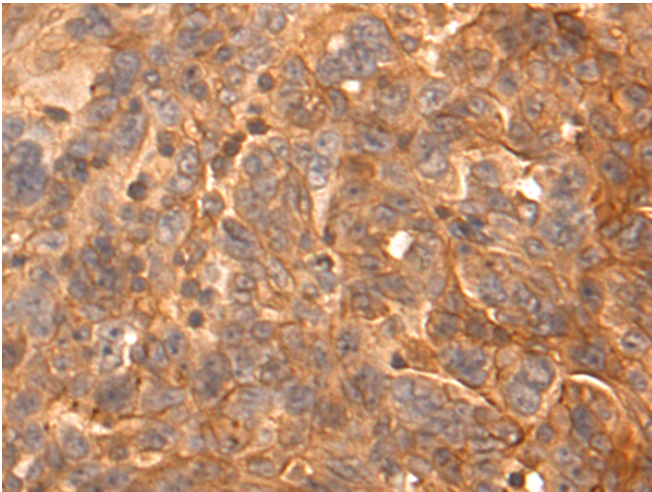
纯化: Antigen affinity purification

种属反应性: Human, Mouse

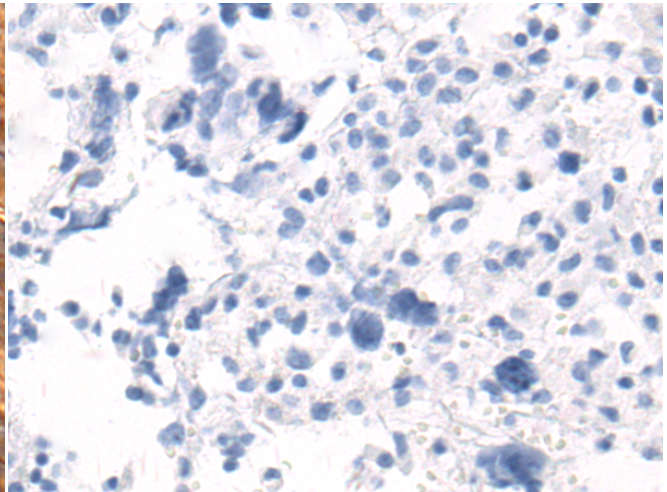
成分: PBS (without Mg²⁺ and Ca²⁺), pH 7.4, 150 mM NaCl, 0.05% Sodium Azide and 40% glycerol

研究领域: Epigenetics and Nuclear Signaling

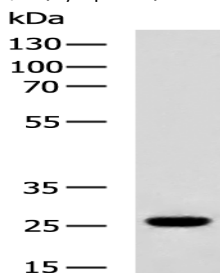
储存和运输: Store at -20°C. Avoid repeated freezing and thawing



Immunohistochemistry analysis of paraffin embedded Human breast cancer tissue using 219582 (TMEM9B Antibody) at a dilution of 1/70 (Cytoplasm).



In comparison with the IHC on the left, the same paraffin-embedded Human breast cancer tissue is first treated with the fusion protein and then with 219582 (Anti-TMEM9B Antibody) at dilution 1/70.



Gel: 8%SDS-PAGE, Lysate: 40 µg;

Lane: Mouse brain tissue lysate;

Primary antibody: 219582 (TMEM9B Antibody) at dilution 1/1200;

Secondary antibody: HRP-conjugated Goat anti rabbit IgG at 1/5000 dilution;

Exposure time: 8 seconds