

TMEM8B RABBIT PAB

货号: S213902

产品全名: TMEM8B 兔多抗

基因符号 NGX6, NAG-5, C9orf127, RP11-112J3.10

UNIPROT ID: A6NDV4 (Gene Accession - NP_057530)

背景: May function as a regulator of the EGFR pathway. Probable tumor suppressor which may function in cell growth, proliferation and adhesion.

抗原: Synthetic peptide of human TMEM8B

经过测试的应用: ELISA, IHC

推荐稀释比: IHC: 25-100; ELISA: 1000-5000

种属反应性: Rabbit

克隆性: Rabbit Polyclonal

亚型: Immunogen-specific rabbit IgG

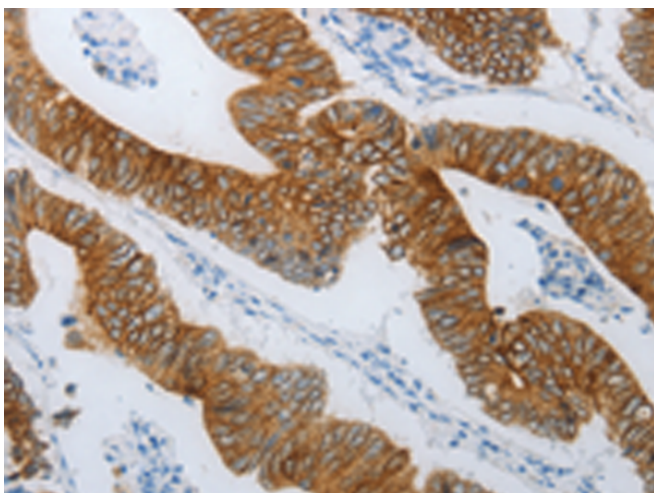
纯化: Antigen affinity purification

种属反应性: Human, Mouse

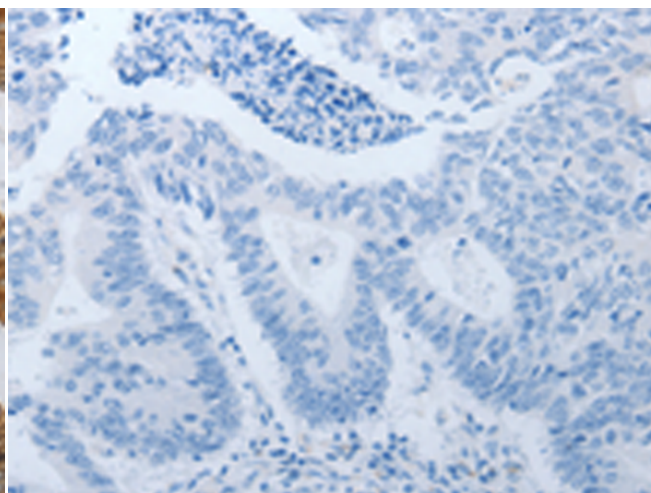
成分: PBS (without Mg²⁺ and Ca²⁺), pH 7.4, 150 mM NaCl, 0.05% Sodium Azide and 40% glycerol

研究领域: Cancer

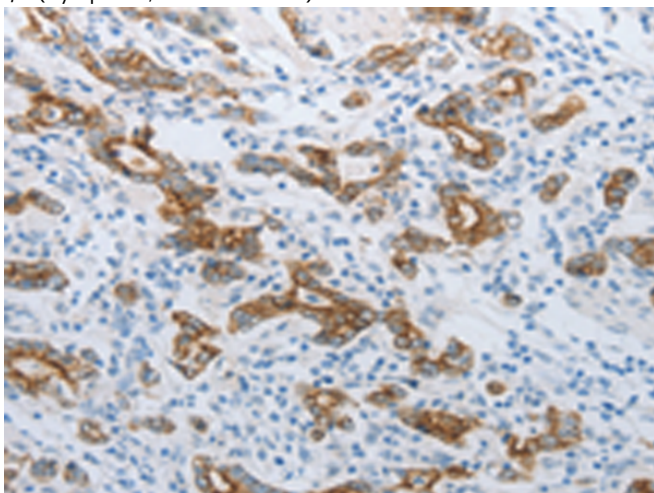
储存和运输: Store at -20°C. Avoid repeated freezing and thawing



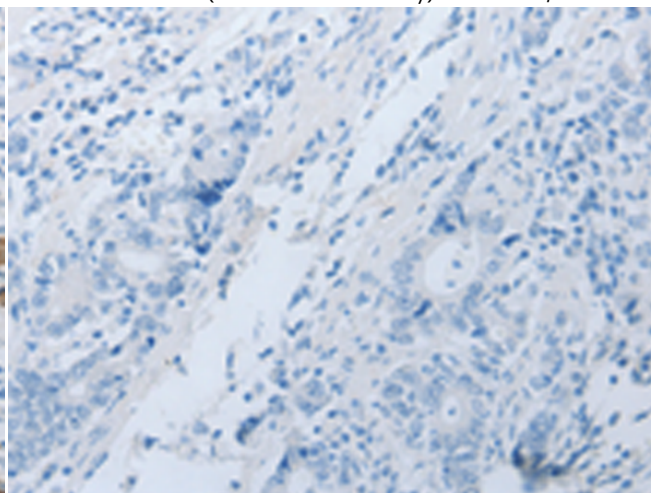
Immunohistochemistry analysis of paraffin embedded Human colon cancer tissue using 213902(TMEM8B Antibody) at a dilution of 1/15(Cytoplasm, Cell membrane).



In comparison with the IHC on the left, the same paraffin-embedded Human colon cancer tissue is first treated with the synthetic peptide and then with 213902(Anti-TMEM8B Antibody) at dilution 1/15.



The image on the left is immunohistochemistry of paraffin-embedded Human gastric cancer tissue using 213902(Anti-TMEM8B Antibody) at a dilution of 1/15.



In comparison with the IHC on the left, the same paraffin-embedded Human gastric cancer tissue is first treated with synthetic peptide and then with D161030(Anti-TMEM8B Antibody) at dilution 1/15.



Product Description

Pioneering GTPase and Oncogene Product Development since 2010
