

TMEM67 RABBIT PAB

货号: S216890

产品全名: TMEM67 兔多抗

基因符号 MKS3; JBTS6; NPHP11; TMEM67; MECKELIN

UNIPROT ID: Q5HYA8 (Gene Accession - BC032835)

背景: The protein encoded by this gene localizes to the primary cilium and to the plasma membrane. The gene functions in centriole migration to the apical membrane and formation of the primary cilium. Multiple transcript variants encoding different isoforms have been found for this gene. Defects in this gene are a cause of Meckel syndrome type 3 (MKS3) and Joubert syndrome type 6 (JBTS6).

抗原: Fusion protein of human TMEM67

经过测试的应用: ELISA, WB, IHC

推荐稀释比: IHC: 20-100;WB: 200-1000;ELISA: 5000-10000

种属反应性: Rabbit

克隆性: Rabbit Polyclonal

亚型: Immunogen-specific rabbit IgG

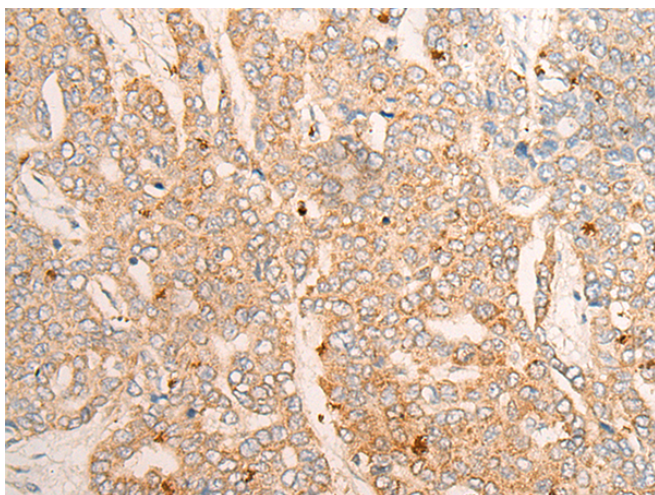
纯化: Antigen affinity purification

种属反应性: Human, Mouse, Rat

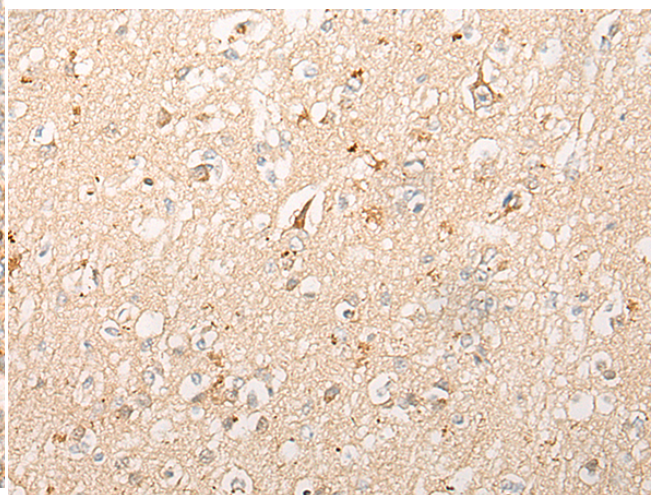
成分: PBS (without Mg²⁺ and Ca²⁺), pH 7.4, 150 mM NaCl, 0.05% Sodium Azide and 40% glycerol

研究领域: Cell Biology

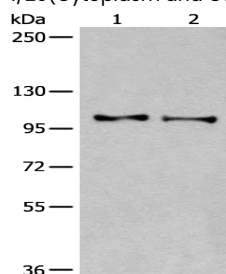
储存和运输: Store at -20°C. Avoid repeated freezing and thawing



Immunohistochemistry analysis of paraffin-embedded Human liver cancer tissue using 216890(TMEM67 Antibody) at a dilution of 1/20(Cytoplasm and Cell membrane).



Immunohistochemistry analysis of paraffin-embedded Human brain tissue using 216890(Anti-TMEM67 Antibody) at a dilution of 1/20.



Gel: 6%SDS-PAGE, Lysate: 40 µg;
Lane 1-2: Human kidney tissue and A549 cell lysates;
Primary antibody: 216890(TMEM67 Antibody) at dilution 1/200;
Secondary antibody: Goat anti rabbit IgG at 1/8000 dilution;
Exposure time: 10 minutes