

TMEM45A RABBIT PAB

货号: S221950

产品全名: TMEM45A 兔多抗

基因符号: DERP7; DNATP4

UNIPROT ID: Q9NWC5 (Gene Accession - NP_060474)

背景: High expression and prognostic value of TMEM45A has been recently reported in various types of human tumors. High levels of TMEM45A expression in tumors may be indicative of potential resistance to cancer therapy, making TMEM45A an interesting biomarker for resistance.

抗原: Synthetic peptide of human TMEM45A

经过测试的应用: ELISA, IHC

推荐稀释比: IHC: 25-100; ELISA: 5000-10000

种属反应性: Rabbit

克隆性: Rabbit Polyclonal

亚型: Immunogen-specific rabbit IgG

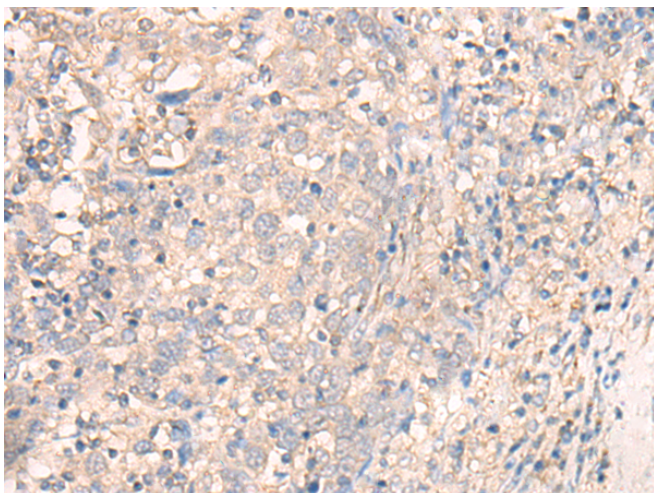
纯化: Antigen affinity purification

种属反应性: Human

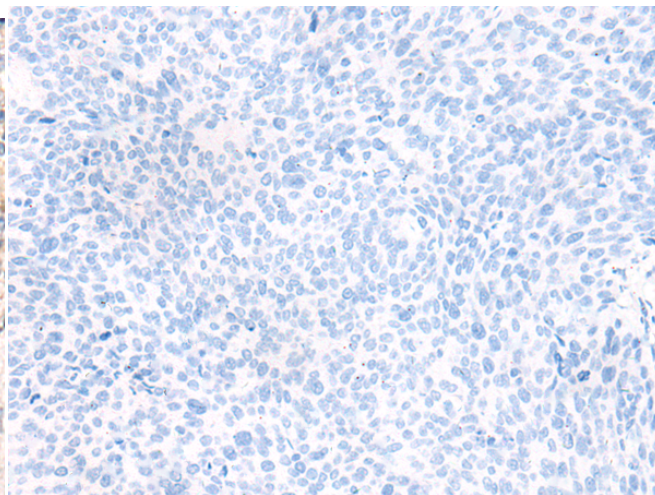
成分: PBS (without Mg²⁺ and Ca²⁺), pH 7.4, 150 mM NaCl, 0.05% Sodium Azide and 40% glycerol

研究领域: Cell Biology

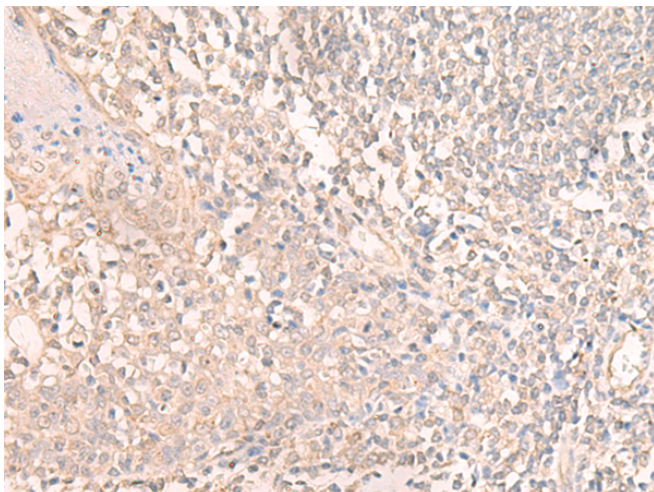
储存和运输: Store at -20°C. Avoid repeated freezing and thawing



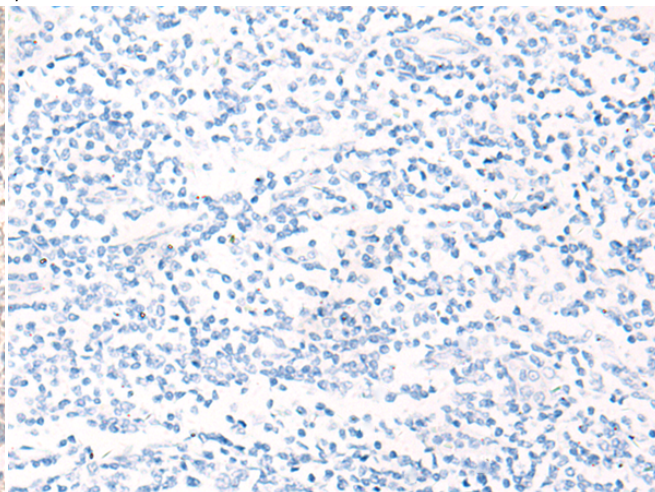
Immunohistochemistry analysis of paraffin embedded Human cervical cancer tissue using 221950(TMEM45A Antibody) at a dilution of 1/20(Cytoplasm and Cell membrane).



In comparison with the IHC on the left, the same paraffin-embedded Human cervical cancer tissue is first treated with the synthetic peptide and then with 221950(Anti-TMEM45A Antibody) at dilution 1/20.



The image on the left is immunohistochemistry of paraffin-embedded Human tonsil tissue using 221950(Anti-TMEM45A Antibody) at a dilution of 1/20.



In comparison with the IHC on the left, the same paraffin-embedded Human tonsil tissue is first treated with synthetic peptide and then with D263782(Anti-TMEM45A Antibody) at dilution 1/20.



Product Description

Pioneering GTPase and Oncogene Product Development since 2010
