

TMEM248 RABBIT PAB

货号: S218641

产品全名: TMEM248 兔多抗

基因符号: C7orf42

UNIPROT ID: Q9NWD8 (Gene Accession - BC008675)

背景: The function of this protein remains unknown.

抗原: Fusion protein of human TMEM248

经过测试的应用: ELISA, IHC

推荐稀释比: IHC: 30-150; ELISA: 5000-10000

种属反应性: Rabbit

克隆性: Rabbit Polyclonal

亚型: Immunogen-specific rabbit IgG

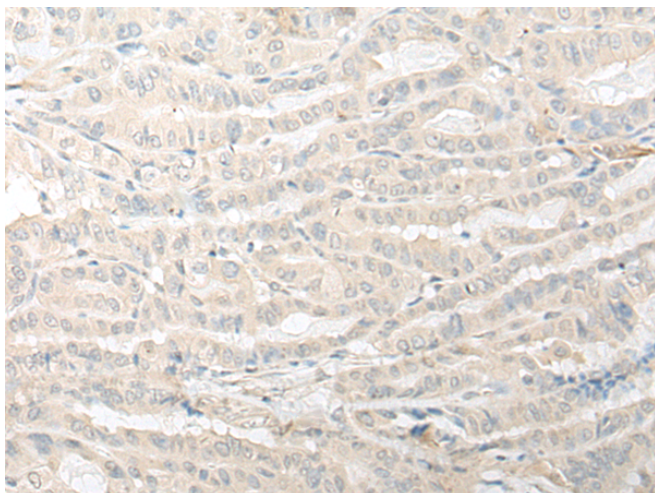
纯化: Antigen affinity purification

种属反应性: Human, Mouse, Rat

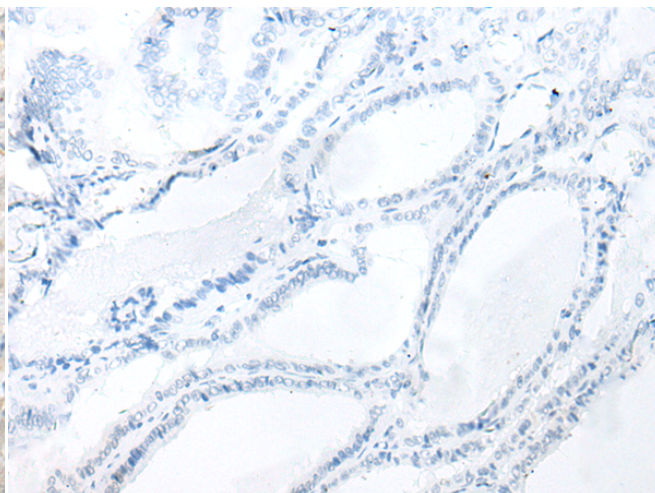
成分: PBS (without Mg²⁺ and Ca²⁺), pH 7.4, 150 mM NaCl, 0.05% Sodium Azide and 40% glycerol

研究领域: Cell Biology

储存和运输: Store at -20°C. Avoid repeated freezing and thawing



Immunohistochemistry analysis of paraffin embedded Human thyroid cancer tissue using 218641(TMEM248 Antibody) at a dilution of 1/30(Cytoplasm).



In comparison with the IHC on the left, the same paraffin-embedded Human thyroid cancer tissue is first treated with the fusion protein and then with 218641(Anti-TMEM248 Antibody) at dilution 1/30.