

TMEM141 RABBIT PAB

货号: S219184

产品全名: TMEM141 兔多抗

基因符号

UNIPROT ID: Q96I45 (Gene Accession - BC007834)

背景: The function of this protein remains unknown.

抗原: Fusion protein of human TMEM141

经过测试的应用: ELISA, WB, IHC

推荐稀释比: IHC: 40-200;WB: 500-2000;ELISA: 5000-10000

种属反应性: Rabbit

克隆性: Rabbit Polyclonal

亚型: Immunogen-specific rabbit IgG

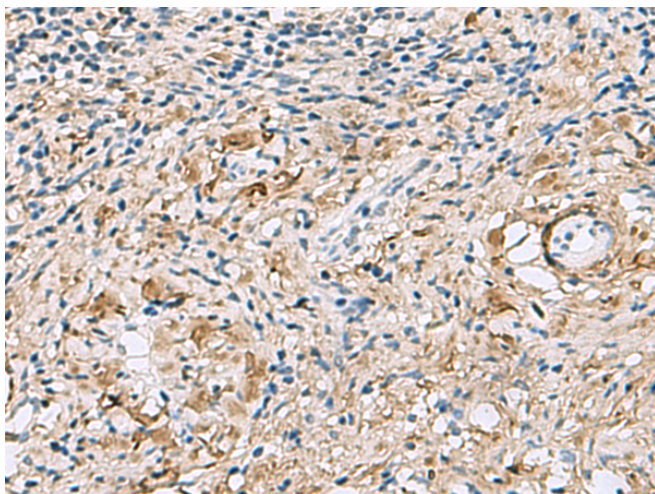
纯化: Antigen affinity purification

种属反应性: Human

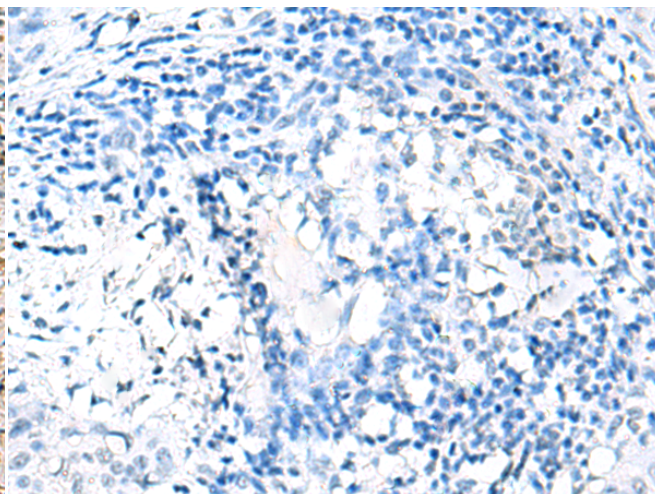
成分: PBS (without Mg²⁺ and Ca²⁺), pH 7.4, 150 mM NaCl, 0.05% Sodium Azide and 40% glycerol

研究领域: Cell Biology

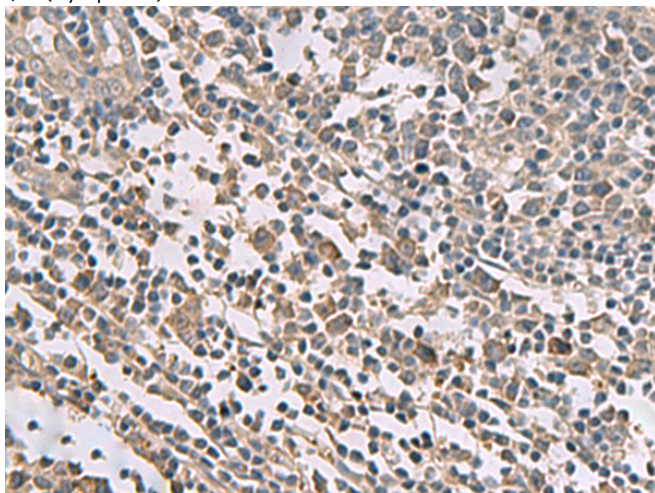
储存和运输: Store at -20°C. Avoid repeated freezing and thawing



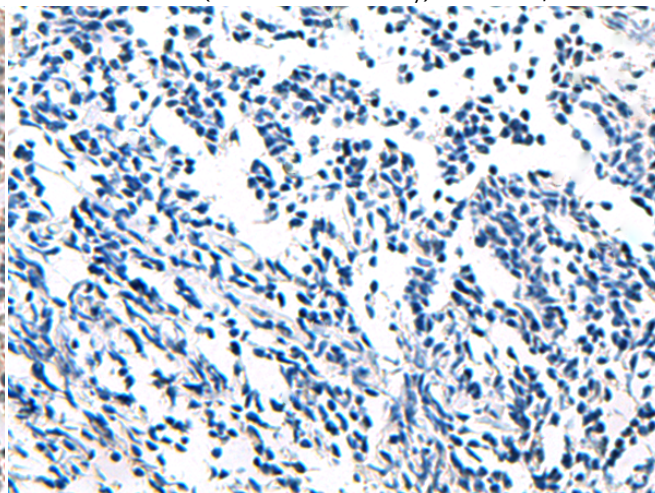
Immunohistochemistry analysis of paraffin embedded Human cervical cancer tissue using 219184(TMEMI41 Antibody) at a dilution of 1/60(Cytoplasm).



In comparison with the IHC on the left, the same paraffin-embedded Human cervical cancer tissue is first treated with the fusion protein and then with 219184(Anti-TMEMI41 Antibody) at dilution 1/60.



The image on the left is immunohistochemistry of paraffin-embedded Human tonsil tissue using 219184(Anti-TMEMI41 Antibody) at a dilution of 1/60.



In comparison with the IHC on the left, the same paraffin-embedded Human tonsil tissue is first treated with fusion protein and then with D226012(Anti-TMEMI41 Antibody) at dilution 1/60.

kDa

72 —
55 —
36 —
28 —
17 —
10 —



Gel: 12%SDS-PAGE, Lysate: 40 µg;
Lane: Human fetal liver tissue lysate;
Primary antibody: 219184(TMEMI41 Antibody) at dilution 1/900;
Secondary antibody: HRP-conjugated Goat anti rabbit IgG at 1/5000 dilution;
Exposure time: 2 minutes



Product Description

Pioneering GTPase and Oncogene Product Development since 2010
